



# 12 Wireless Communication Green Base Station Function





## Overview

---

The base station subsystem (BSS) is the section of a traditional which is responsible for handling traffic and signaling between a and the network switching subsystem. The BSS carries out of speech channels, allocation of radio channels to mobile phones, , and reception over the and many othe.

Base Transceiver Stations (BTS) play a critical role in cell networks. They handle signal transmission, encoding, and the handover process. These functions make sure we can communicate effectively using our mobile devices. At the heart of BTS operations is two-way signal handling.

Base Transceiver Stations (BTS) play a critical role in cell networks. They handle signal transmission, encoding, and the handover process. These functions make sure we can communicate effectively using our mobile devices. At the heart of BTS operations is two-way signal handling.

Base stations are critical components in wireless communication networks, serving as the intermediary between mobile devices and the core network. They play a vital role in ensuring seamless connectivity, efficient data transmission, and reliable communication services. This blog explores the.

The base station subsystem (BSS) is the section of a traditional cellular telephone network which is responsible for handling traffic and signaling between a mobile phone and the network switching subsystem. The BSS carries out transcoding of speech channels, allocation of radio channels to mobile.

Section 12 concludes with a discussion of green wireless communication. The primary goal of the presentation is to examine the energy-efficient scenarios used in green wireless communication in 5G networks. Creating strong, eco-friendly wireless networks and equipment is the aim of green wireless.

Power Amplifier: The RF signals are power amplified before transmission to their destinations for increased signal strength. Therefore, this is very important for enabling the signals to cover long distances and even penetrate barriers in the communication environment. Control Unit: The controller.

The article has been reviewed by Dr. Botao Feng, an IEEE Senior Member/Senior Engineer/Senior Research Fellow; a Postgraduate Advisor/Postdoctoral Advisor from Shenzhen University, Antennas and Propagation, Wireless Communication. A base



station plays a pivotal role in the realm of.

This shows its critical role in connecting mobile devices. Antenna diversity techniques, such as space and polarization diversity, enhance signal quality and robustness. Directional antennas are used to reduce interference over long distances. Sectorial antennas cover 120° angles for better.



## 12 Wireless Communication Green Base Station Function

---

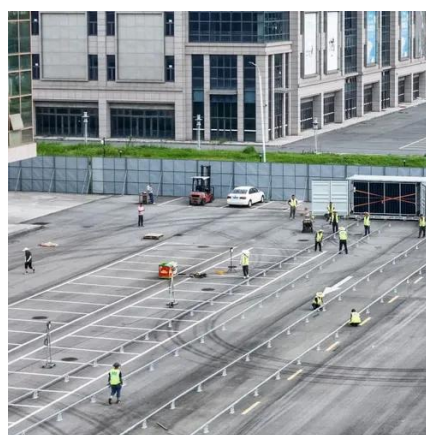


### [What Is Base Station In Wireless Communication?](#)

There are several types of base stations, each designed for specific wireless communication systems: Cellular Base Stations: These are used in cellular networks to ...

### **What Is the Role of a Base Station in Wireless Communication?**

Base stations are critical components in wireless communication networks, serving as the intermediary between mobile devices and the core network. They play a vital role in ...



### **Green Wireless Communication , Wireless Personal Communications ...**

In order to establish an effective green wireless communication (GWC) strategy, it is more important to learn the limitations of existing methods.

### **What Is A Base Station?**

A base station is an integral component of wireless communication networks, serving as a central point that manages the transmission and reception of signals between ...



**INTEGRATED DESIGN**  
EASY TO TRANSPORT AND INSTALL,  
FLEXIBLE DEPLOYMENT



### [Research on future 6G green wireless networks](#)

Building upon this intelligent network architecture, the paper introduces novel ideas for protocol stack design and multi-rate signaling transmission semantic transmission model.

### [Understanding Base Stations: The Backbone of Wireless ...](#)

Base stations are the backbone of modern wireless communication networks. They ensure that mobile devices can connect to the internet, make calls, and send data without ...



### [Green Wireless Communication , Wireless Personal ...](#)

In order to establish an effective green wireless communication (GWC) strategy, it is more important to learn the limitations of existing methods.



### [What is a Base Station? -- From Communication Core to ...](#)



This article will guide you to a deeper understanding of a base station's composition and working principles, with a special focus on the impact of heat on base station ...

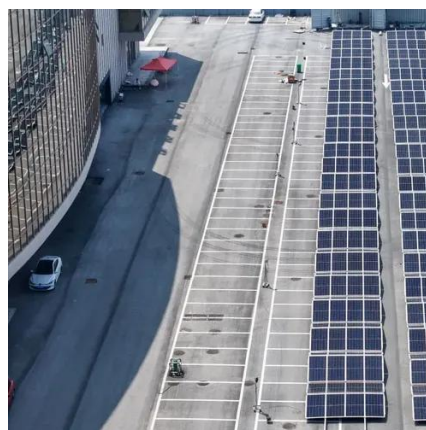


## Understanding Base Stations: The Backbone of Wireless Communication

Base stations are the backbone of modern wireless communication networks. They ensure that mobile devices can connect to the internet, make calls, and send data without ...

### [Base Transceiver Station: Core Functionality Explained](#)

Discover what a Base Transceiver Station is and how it's pivotal in mobile communication networks. Unlock the essentials of BTS functionality here.



### Base station subsystem

Overview  
Base transceiver station  
Base station controller  
Packet control unit  
BSS interfaces  
See also

The base station subsystem (BSS) is the section of a traditional cellular telephone network which is responsible for handling traffic and signaling between a mobile phone and the network switching subsystem. The BSS carries out transcoding of speech channels, allocation of radio channels to mobile phones, paging, transmission and reception over the air interface and many





othe...

### Base station subsystem

The base station subsystem (BSS) is the section of a traditional cellular telephone network which is responsible for handling traffic and signaling between a mobile phone and the network ...

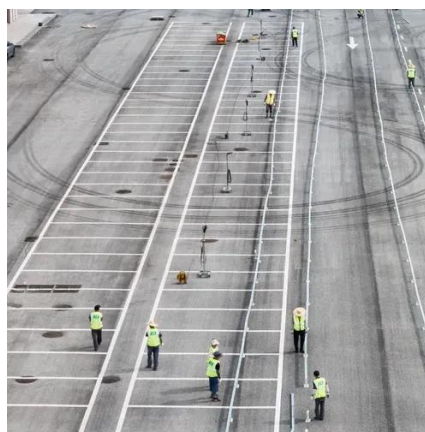


### Base Stations

Base stations form a key part of modern wireless communication networks because they offer some crucial advantages, ...

### Base Stations

Base stations form a key part of modern wireless communication networks because they offer some crucial advantages, such as wide coverage, continuous communications and ...



### [What is a Base Station? -- From Communication ...](#)

This article will guide you to a deeper understanding of a base station's composition and working principles, with a special focus on the ...



## Contact Us

---

For catalog requests, pricing, or partnerships, please visit:

<https://www.asimer.es>

Phone: +34 910 56 87 42

Email: [info@asimer.es](mailto:info@asimer.es)

Scan the QR code to access our WhatsApp.

