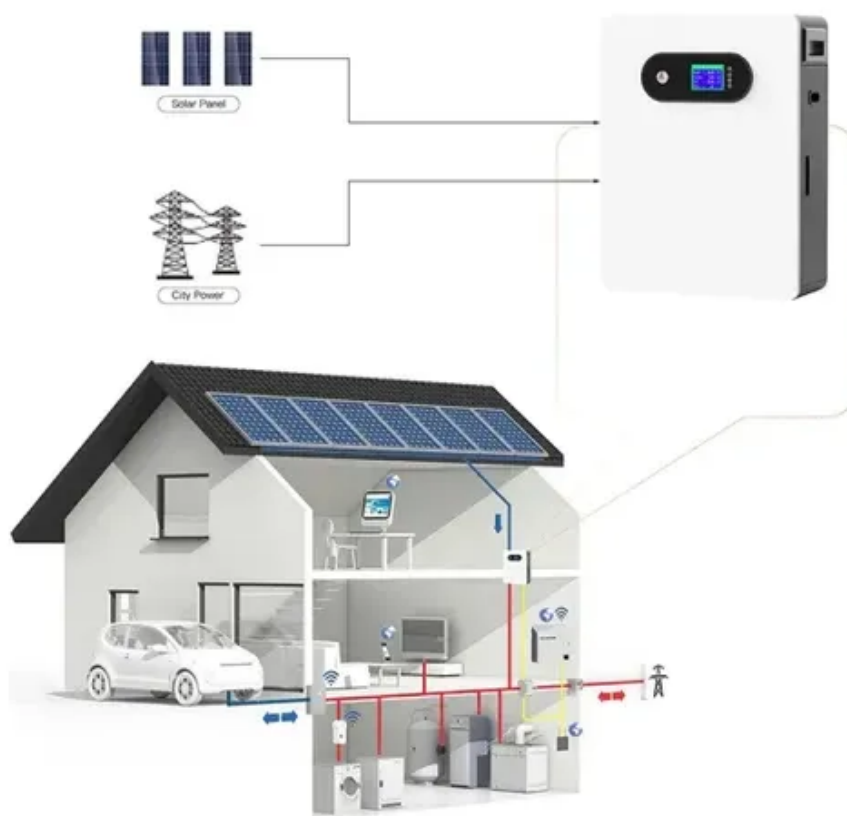




# 40kWh Guinean collapsible container used in wastewater treatment plant





## Overview

---

The ClearFox® Containerized System is a packaged wastewater treatment plant, custom designed and pre-installed within ISO shipping containers. As a modular solution, it is easily transportable by land or sea, with minimal onsite installation required.

The ClearFox® Containerized System is a packaged wastewater treatment plant, custom designed and pre-installed within ISO shipping containers. As a modular solution, it is easily transportable by land or sea, with minimal onsite installation required.

TLS intelligent containerised waste water treatment system or sewage treatment plant (STP) is a modular system where all waste water treatment equipment is completely preinstalled in ISO standard or offshore standard containers. The modular containerised system with the various components of a.

Enter the containerized wastewater treatment plant (CWWTP) — a game-changer that offers modular, scalable, and efficient treatment solutions tailored to diverse settings. This article explores the intricacies of containerized wastewater treatment plants, highlighting their importance, benefits, and.

Looking for a flexible, cost-efficient, and scalable wastewater treatment solution?

Whether for new construction, system upgrades, or refurbishment projects, we are your reliable partner for modular containerized wastewater treatment plants. Our containerized water treatment systems offer: The FBR.

KLARO Container is a flexible and mobile wastewater treatment system that can be used where a wastewater treatment system is required but there is no connection to the sewer system. KLARO containerized wastewater treatment systems score with their quality made in Germany, flexibility and.

Mobile wastewater treatment systems can be used for both temporary and permanent wastewater treatment solutions. Containerized, decentralized sewage treatment systems can handle populations from 30 to 10,000 persons and can be designed to achieve any effluent standard required. ClearFox® Mobile.



Compact Sewage Treatment Solutions for Remote and Temporary Sites Managing sewage effectively in areas with limited infrastructure can be challenging. Traditional sewage treatment plants often require large footprints and permanent installations, making them impractical for remote projects. What is a containerized wastewater treatment plant?

A containerized wastewater treatment plant is a wastewater treatment system that is fully integrated into a container. For uncomplicated and fast transportation, we use 10, 20 and 40-foot shipping containers in accordance with the international ISO standard for our KLARO container systems.

What are mobile wastewater treatment and containerized sewage systems?

Mobile wastewater treatment and containerized sewage systems can be used in a very wide range of applications. They can be used for short term, mobile wastewater treatment where portable solutions are needed. But they can also be used for long term, fixed applications. They are specifically suited to applications such as:

How many m<sup>3</sup> of wastewater can a containerized wastewater treatment plant handle?

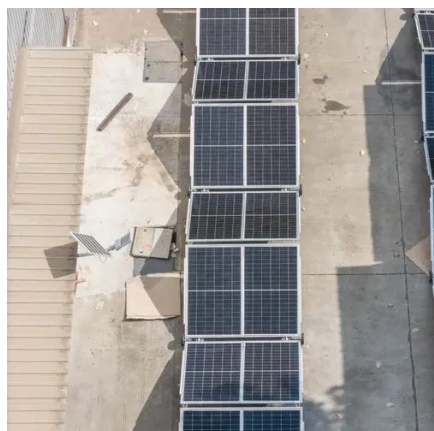
We have experience with containerized wastewater treatment plants for up to 1,380 PE or 207 m<sup>3</sup> of wastewater per day. A wastewater treatment plant is only as effective and efficient as the installed system.

What is a containerized sewage treatment system?

Containerized, decentralized sewage treatment systems can handle populations from 30 to 10,000 persons and can be designed to achieve any effluent standard required. Sector Mobile wastewater treatment and containerized sewage systems can be used in a very wide range of applications.



## 40kWh Guinean collapsible container used in wastewater treatment p



### [Containerized Wastewater Treatment Plant](#)

Containerized mobile treatment systems are ready to use immediately on delivery and cater from 60 persons to 20,000 persons capacity. A ...

### Mobile Wastewater Treatment

Containerized, modular, mobile wastewater treatment systems offer a flexible solution for management of sewage from a range of applications. Mobile wastewater treatment ...



### ClearFox® Containerized Systems

The ClearFox® Containerized System is a packaged wastewater treatment plant, custom designed and pre-installed within ISO shipping containers. ...

### [Modular Containerized Wastewater Treatment ...](#)

A modular containerized wastewater treatment plant is a prefabricated system installed in standard containers, offering fast deployment, scalable ...



### [Containerized Wastewater Treatment Plant](#)

Containerized wastewater treatment plants are compact, pre-engineered modular systems housed in shipping containers. These facilities utilize advanced treatment ...



### [WASTEWATER TREATMENT CONTAINER - Aiga Concept container ...](#)

Our modular units offer complete, mobile solutions for efficient urban wastewater treatment. Based on the activated sludge process, these containers guarantee wastewater purification in ...



### [Aspiral\(TM\) Flex Building-Blocks , Wastewater ...](#)

Whether you are looking for a complete plant or a unit to complement an existing plant, the Aspiral(TM) Flex line includes a variety of modular ...



### **Intelligent containerised waste water treatment plant , Sewage**



Based on AAO-MBR technology, our patented intelligent integrated waste water treatment container is a new type of waste water treatment container with high-throughput plate ...



### WASTEWATER TREATMENT CONTAINER - ...

Our modular units offer complete, mobile solutions for efficient urban wastewater treatment. Based on the activated sludge process, these ...



### Intelligent containerised waste water treatment ...

Based on AAO-MBR technology, our patented intelligent integrated waste water treatment container is a new type of waste water treatment ...



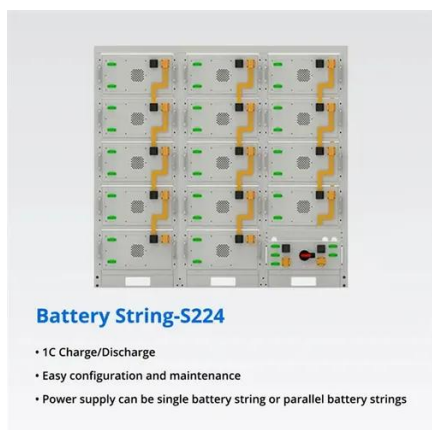
### Mobile wastewater treatment plants in containers

KLARO Container is a flexible and mobile wastewater treatment system that can be used where a wastewater treatment system is required but there is no connection to the sewer system.

## **Aspiral(TM) Flex Building-Blocks , Wastewater Treatment , Fluece**



Whether you are looking for a complete plant or a unit to complement an existing plant, the Aspiral(TM) Flex line includes a variety of modular containerized wastewater treatment blocks so ...



### Containerized Sewage Treatment Systems

Each unit is housed in a durable container, requiring minimal site preparation. A single 20-foot container can process sewage for small communities, work camps, or disaster relief zones.

...

### Containerized Wastewater Treatment Plant

Containerized mobile treatment systems are ready to use immediately on delivery and cater from 60 persons to 20,000 persons capacity. A containerised portable sewage treatment plant gives ...



### Modular Containerized Wastewater Treatment Plants , utp ...

A modular containerized wastewater treatment plant is a prefabricated system installed in standard containers, offering fast deployment, scalable capacity, and flexible operation.

## **ClearFox® Containerized Systems**



The ClearFox® Containerized System is a packaged wastewater treatment plant, custom designed and pre-installed within ISO shipping containers. As a modular solution, it is easily ...





## Contact Us

---

For catalog requests, pricing, or partnerships, please visit:

<https://www.asimer.es>

Phone: +34 910 56 87 42

Email: [info@asimer.es](mailto:info@asimer.es)

Scan the QR code to access our WhatsApp.

