



# 420w solar panel size specifications





## Overview

---

Solar Panel, EverVolt HK2 Black Series, 420 Watt, 42.200 Volt, 9.96 Amp, 73.400 x 40.900 x 1.200 Inch Produce more energy throughout the day even on the hottest days in the warmest climates.

Solar Panel, EverVolt HK2 Black Series, 420 Watt, 42.200 Volt, 9.96 Amp, 73.400 x 40.900 x 1.200 Inch Produce more energy throughout the day even on the hottest days in the warmest climates.

What are 420-watt solar panels?

420-watt solar panels are modules with an output rating of 420 watts. They are predominantly monocrystalline and usually have 72 cells or more. The efficiency of these panels varies from 15 to 22% depending on the manufacturer. Is a 420 watt solar panel a good fit?

W/m<sup>2</sup>, temperature . . . °C), based on a production spread with a tolerance of P<sub>MAX</sub>, V<sub>OC</sub> & I<sub>SC</sub> ± within one watt class. Nominal module operating temperature (NMOT: air mass AM temperature °C, windspeed m/s). \* Where xxx indicates the nominal power class (P<sub>MAX</sub>) at STC above. See installation manual.

The JSXXXM 144 Series of JS Solar is a type of photovoltaic (PV) [. ] The HS144-M- [375-430W] of Hershey Power is a type of photovoltaic [. ] The HS144-M 420-450W is a high-quality solar panel manufactured by [. ] The LS390-420HC is a high-performance solar module manufactured by La [. ].

within one watt class. Nominal module operating temperature (NMOT: air mass AM 1. speed 3.3 ft/s (1 m/s). \* Where xxx indicates the nominal power class documents for affordable solar power. As Solar's Most Trusted, REC is committed to high quality, innovation, and a low 20 Tuas South A anels it.

From 420W to 600W, panel length increases progressively from around 1.7 m to 2.27 m, while most widths remain standardised at 1130–1135 mm due to half-cut or 1/3-cut cell configurations. In practice, this incremental size increase leads to three major implications: Layout flexibility changes: The.



Introducing the REC Alpha Pure 2 Series, a pioneering line of solar panels tailored for both residential and commercial installations. The 420W model offers exceptional performance, efficiency, and durability. Leveraging REC's advanced heterojunction (HJT) cell technology and a sleek, compact.



## 420w solar panel size specifications

---



### [How to Choose Between 410W, 450W, 500W and 600W Solar ...](#)

A comparison of 420W, 450W, 500W and 600W solar panel dimensions and roof-compatibility tips to help residential and commercial projects quickly identify the most suitable ...

### **Solar Panel, 420W, 42.200V, 9.96A**

Solar Panel, EverVolt HK2 Black Series, 420 Watt, 42.200 Volt, 9.96 Amp, 73.400 x 40.900 x 1.200 Inch. Produce more energy throughout the day even on the hottest days in the warmest ...



### **420W SOLAR PANEL SPECIFICATIONS**

The JA Solar JAM54S31-420/LR is a 420W half-cell solar panel with a stylish all-black design. This solar module is part of the DeepBlue 3.0 Pro LR Series, which offers high efficiency, ...

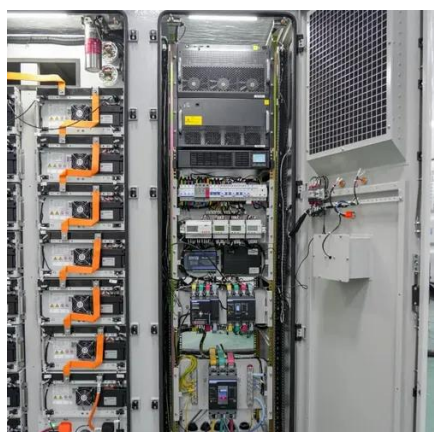
### **REC Alpha Pure 2 Series 420W Solar Panel , Solar Electric Supply**

The Alpha Pure 2 420W panel features a durable, anodized aluminum frame and 0.13 in solar glass with an anti-reflective surface treatment, ensuring long-term reliability.



### **420w solar panel for sale , Buy online for home, boat and RV**

420W solar panels tend to weigh about 52 lbs, being approximately 82 inches long and 42 inches wide. Modules with this output rating are predominantly monocrystalline and ...



### [420w solar panel for sale , Buy online for home. ...](#)

420W solar panels tend to weigh about 52 lbs, being approximately 82 inches long and 42 inches wide. Modules with this ...



### **Trina Solar US 420W**

All you need to know about the 420W solar panel including rating, cost, efficiency, and warranty terms.



### [LG LG420QAK-A6: 420W High Efficiency LG ...](#)



Get information on the LG 420W High Efficiency LG NeON® R Solar Panel with 66 Cells (6 x 11), Module Efficiency: 21.1%, ...



### [REC Alpha Pure 2 Series 420W Solar Panel](#)

The Alpha Pure 2 420W panel features a durable, anodized aluminum frame and 0.13 in solar glass with an anti-reflective surface treatment, ensuring ...



### rec Alph pure 2 Series

The following table provides an overview of REC's 25-year Performance Warranty by product, applicable to panels delivered to REC customers on or after October 1, 2018:



### REC Alpha Pure-R Series

### How to Choose Between 410W, 450W, 500W and 600W Solar Panels: A Size

A comparison of 420W, 450W, 500W and 600W solar panel dimensions and roof-compatibility tips to help residential and commercial projects quickly identify the most suitable ...



As Solar's Most Trusted, REC is committed to high quality, innovation, and a low carbon footprint in the solar materials and solar panels it manufactures. Headquartered in Norway with ...



### **420 Watt Solar panels for sale , Prices, dimensions, weight, ...**

420 Watt Solar panels' range of prices, dimensions, sizes, voltage output, specifications datasheets Ranges of information Voltage: 9.5V ~ 180.4V Amp: 2.33A ~ 15.89A

### [LG LG420QAK-A6: 420W High Efficiency LG NeON® R Solar Panel](#)

Get information on the LG 420W High Efficiency LG NeON® R Solar Panel with 66 Cells (6 x 11), Module Efficiency: 21.1%, Connector Type: MC4. Find pictures, reviews, and tech specs for ...





## Contact Us

---

For catalog requests, pricing, or partnerships, please visit:

<https://www.asimer.es>

Phone: +34 910 56 87 42

Email: [info@asimer.es](mailto:info@asimer.es)

Scan the QR code to access our WhatsApp.

