



# 50W solar panel charges and discharges at the same time





## Overview

---

Answer: Lithium-ion batteries are ideal for 50-watt solar panels due to their high efficiency, longer lifespan, and compact size. They offer deeper discharge cycles (80-90%) compared to lead-acid (50%), making them suitable for consistent energy storage.

Answer: Lithium-ion batteries are ideal for 50-watt solar panels due to their high efficiency, longer lifespan, and compact size. They offer deeper discharge cycles (80-90%) compared to lead-acid (50%), making them suitable for consistent energy storage.

That is why a solar panel charge time calculator is necessary to turn complex energy data into an easily usable estimate for even the layman, so that they can be ensured to be using their equipment as efficiently and as accurately as possible. What Affects Solar Battery Charging Time?

Several.

Wondering how long your solar panel will take to charge a battery?

You're not alone. Whether you're powering up a home system or a weekend camper, knowing the math behind charging time saves you stress—and surprises. Let's break it down into simple steps anyone can follow. How to calculate charging.

Easily find out how long your solar panels take to charge any battery. Use our free solar panel charging time calculator for fast and accurate results. Ever wondered how long your solar panel will take to charge a battery?

You're not alone. Many people buy solar panels but aren't sure how to.

A charge time calculator tells you how long it takes for your battery to recharge using energy from the sun. Those in the sunniest areas of the country should really look into getting solar energy as a way of becoming energy independent. Have a look at Texas's solar panel cost and get started on.

In order to calculate how long it takes for your solar battery to be charged, you



need to first start with the following key data. 1. Wattage of solar panel (W) If you only have one solar panel, you only need to input the rated wattage of this solar panel into the calculator, of course, if you need.

The Solar Battery Charge Time Calculator determines the time required to fully charge a solar battery based on various input parameters. Its primary use is to assist in optimizing solar energy systems, providing insights into the efficiency of solar panels, and planning energy storage solutions. By.



## 50W solar panel charges and discharges at the same time

---



### [Solar Battery Charge Time Calculator](#)

Solar Battery Charge Time Calculator determines the time required to fully charge a solar battery based on various input parameters.

### [Solar Panel Charging Time Calculator](#)

Solar panel charging time calculators are powerful tools for accurately estimating the time needed to charge batteries using solar energy. By inputting specific parameters, ...

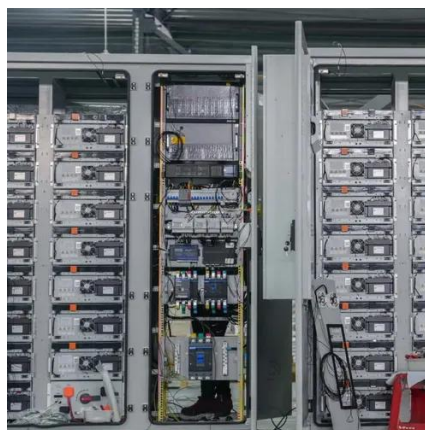


### **Solar Panel Charge Time Calculator**

If you're looking for a solar panel charge time calculator, we've got that and more for you. We want to explain what the calculator can do for you and why it's important to be able to use it.

### [Solar Battery Charge Time Calculator \(12v, 24v, 48v\)](#)

Use our solar battery charge time calculator to find out how long it will take to recharge your battery using solar panels.



### Solar Panel Charge Time Calculator

As you can see from the above calculations, there are many formulas to calculate the charging time of solar batteries. If you want to ...



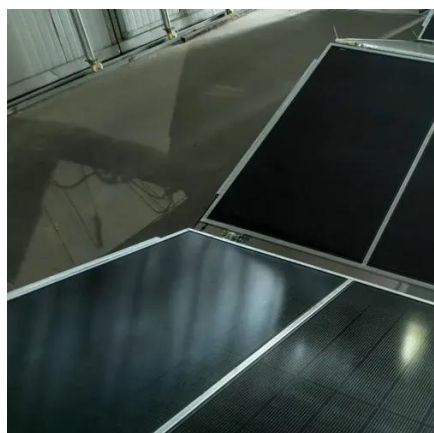
### [How to Calculate Charging Time of Battery by ...](#)

So here's the deal: figuring out how long your solar panel takes to charge a battery isn't rocket science. You just need the panel's ...



### Solar Panel Charge Time Calculator: Accurately Estimate How ...

Whenever you need to calculate the charge time of your solar panel batteries, you can always turn to a solar panel charge time calculator. The battery or energy storage ...



### Solar Panel Charge Time Calculator



If you're looking for a solar panel charge time calculator, we've got that and more for you. We want to explain what the calculator can do for you and ...



### [Solar Panel Charging Time Calculator](#)

Solar panel charging time calculators are powerful tools for accurately estimating the time needed to charge batteries using solar ...

### [Which Battery is Best for a 50 Watt Solar Panel?](#)

Answer: Lithium-ion batteries are ideal for 50-watt solar panels due to their high efficiency, longer lifespan, and compact size. They offer deeper discharge cycles (80-90%) ...



### **Solar Panel Charge Time Calculator**

As you can see from the above calculations, there are many formulas to calculate the charging time of solar batteries. If you want to rely solely on formulas to calculate how long ...



### [How to Calculate Charging Time of Battery by Solar Panel](#)



So here's the deal: figuring out how long your solar panel takes to charge a battery isn't rocket science. You just need the panel's wattage, the battery's capacity, and a pinch of ...



### [Solar Panel Charging Time Calculator](#)

Easily find out how long your solar panels take to charge any battery. Use our free solar panel charging time calculator for fast and accurate results.

### [How Many Batteries Can a 50W Solar Panel Charge?](#)

A 50W solar panel can charge a 150ah deep cycle battery in six hours. This is possible if we assume ideal weather conditions and the solar panel can produce 50 watts an hour.





## Contact Us

---

For catalog requests, pricing, or partnerships, please visit:

<https://www.asimer.es>

Phone: +34 910 56 87 42

Email: [info@asimer.es](mailto:info@asimer.es)

Scan the QR code to access our WhatsApp.

