



660kW solar panel size





Overview

A 660kW system using 370W panels will require about 3,129.5 square meters of roof to be installed. Each 370W panel measures about 1.75m x 1m. 660kW solar power systems are mostly suitable for Large industrial energy users or solar farms. This size of solar power system is classed as.

A 660kW system using 370W panels will require about 3,129.5 square meters of roof to be installed. Each 370W panel measures about 1.75m x 1m. 660kW solar power systems are mostly suitable for Large industrial energy users or solar farms. This size of solar power system is classed as.

Did you know that 660kW solar power systems can consist of a different number of panels depending on the size of the solar panels?

Here are some common panel sizes which could make up a 660kW system: How Much Energy Does a 660kW System Produce?

Depending on where in Australia (or around the world).

Standard Residential Panels Optimize Space and Handling: The industry-standard 60-cell panel dimensions (65" x 39" x 1.5") aren't arbitrary - they represent the optimal balance between power output, installation ease, and roof space utilization. At 40-46 pounds, they can be safely handled by.

The size of solar panels varies depending on the number of photovoltaic (PV) cells they include. Each cell adds to the panel's total voltage and power output. The most commonly used cell layouts are 60-cell, 72-cell, and 96-cell panels. Let's consider their main features and purpose: 60-cell solar.

Standard residential solar panels are typically around 5.8 feet long by 3.5 feet wide and weigh between 40 to 50 pounds. However, the exact dimensions depend heavily on the panel's technology, wattage, and the manufacturer's design. Understanding these specifications is crucial for determining roof.

Presenting the 210 Series XP- (640~670)-66MDH solar panels by Xpower [.] Introducing the G12-132GA 645~665W by More Energy, an exceptional [.] The ASTRO 6 Semi CHSM66M-HC Series solar panels by Astronergy are [.] The SS-



(650-670)-66MDH-G12, developed by Sunova Solar, is an [.] Introducing.

Residential panels are usually made up of 60 PV solar cells, arranged in a 10 by 6 grid pattern. Although exact dimensions vary by manufacturer, home solar panels usually measure about 5.4 feet wide by 3.25 feet long (about 17.6 square feet), with a depth of less than two inches. Businesses and.



660kW solar panel size



[Ultimate Guide to Sizing Your Solar PV System](#)

Discover how to size a solar PV system with our interactive calculator. Learn about panel wattage, battery capacity, and the impact of solar irradiance on energy production.

[The Ultimate Guide to Solar Panel Size, Weight](#)

This comprehensive solar panel size chart includes the most popular residential models from top manufacturers, showing both Imperial ...

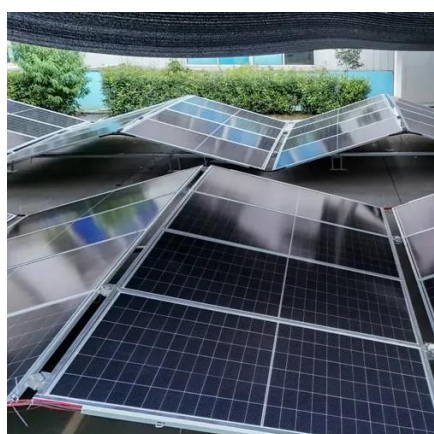


[Solar Panel Size & Dimensions Guide 2025 . Complete Specs](#)

In this comprehensive guide, you'll learn everything you need to know about solar panel sizing, from standard dimensions to weight considerations, helping you determine the ...

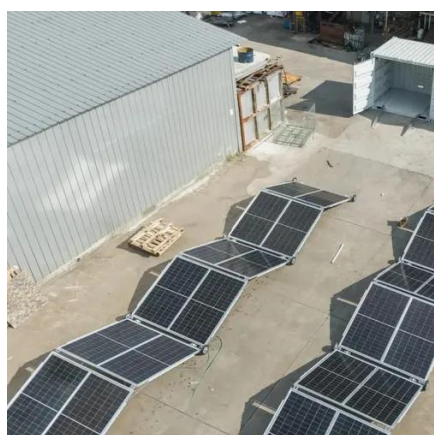
[660kW Solar System Information - Facts & Figures](#)

Did you know that 660kW solar power systems can consist of a different number of panels depending on the size of the solar panels? Here are some common panel sizes which could ...



660 watt solar panel for sale , Buy online for home, boat and RV

What is a 660-Watt Solar Panel? A 660-watt solar panel is a device capable of generating 660 watts of electricity under optimal conditions. These panels are known for their ...



[Detailed Guide to Solar Panel Size & Dimensions](#)



[Detailed Guide to Solar Panel Size & Dimensions](#)

Choosing the proper system is not only about the solar panel dimensions. You should also consider wattage, number of cells, layout possibilities, and energy consumption. ...



[660 watt solar panel for sale , Buy online for home, ...](#)

What is a 660-Watt Solar Panel? A 660-watt solar panel is a device capable of generating 660 watts of electricity under optimal ...



Choosing the proper system is not only about the solar panel dimensions. You should also consider wattage, number of cells, layout ...



The Ultimate Guide to Solar Panel Size, Weight & Wattage (2025)

This comprehensive solar panel size chart includes the most popular residential models from top manufacturers, showing both Imperial and Metric measurements for easy ...

[Solar panel size and weight: everything you need to know](#)

Although exact dimensions vary by manufacturer, home solar panels usually measure about 5.4 feet wide by 3.25 feet long (about 17.6 square feet), with a depth of less ...



Photovoltaic Panel 660W: Key Dimensions and Industry Insights

Most 660W photovoltaic panels measure approximately 1,640-2,384 mm in length and 992-1,303 mm in width, with thickness ranging from 35-40mm. These dimensions vary across ...

Sunergy Solar , MONO650W-660Wp-670 Watt -700Wp 210mm cell , Solar Panel



Sunergy Solar Solar Panel Series
MONO650W-660Wp-670 Watt -700Wp 210mm
cell. Detailed profile including pictures,
certification details and manufacturer PDF.



660 Watt Solar panels' range of prices, dimensions, sizes, voltage

660 Watt Solar panels' range of prices,
dimensions, sizes, voltage output, specifications
datasheets Ranges of information Voltage: 36.2V
~ 38.9V Amp: 14.47A ~ 18.23A



[Solar panel size and weight: everything you need ...](#)

Although exact dimensions vary by manufacturer,
home solar panels usually measure about 5.4 feet
wide by 3.25 feet long (about 17.6 ...



[Sunergy Solar , MONO650W-660Wp-670 Watt](#)

Sunergy Solar Solar Panel Series
MONO650W-660Wp-670 Watt -700Wp 210mm
cell. Detailed profile including pictures,
certification details and ...





Contact Us

For catalog requests, pricing, or partnerships, please visit:

<https://www.asimer.es>

Phone: +34 910 56 87 42

Email: info@asimer.es

Scan the QR code to access our WhatsApp.

