



AC DC integrated solar container energy storage system





Overview

The "AC-DC Integrated" series includes two models, 5MWh and 5.6MWh, both housed in standard 20-foot containers, with the 5.6MWh model being the world's largest capacity "AC-DC Integrated" energy storage system.

The "AC-DC Integrated" series includes two models, 5MWh and 5.6MWh, both housed in standard 20-foot containers, with the 5.6MWh model being the world's largest capacity "AC-DC Integrated" energy storage system.

According to ESπ, Envision Energy's "Integrated AC-DC" 5.0/5.6MWh energy storage system series was officially rolled out at its Jiangyin factory. The series includes two standard 20-foot container models with capacities of 5MWh and 5.6MWh, the latter being the world's largest capacity "Integrated".

[The World's Largest "AC-DC Integrated" Energy Storage System Officially Rolls Off the Production Line] Recently, Envision Energy Storage's "AC-DC Integrated" 5.0/5.6MWh energy storage system series was officially rolled off the production line at the Jiangyin factory. The Envision Energy Storage.

TIANJIN, China, June 17, 2024 /PRNewswire/ -- On June 13th 2024, Lishen released new generation 20ft 5MWh liquid-cooled container and low-voltage residential energy storage product LS-C15K-W. 5MWh AC and DC Integrated Energy Storage System This new system integrated proprietary 314Ah cells and.

Recently, Envision Energy's "AC-DC Integrated" 5.0/5.6MWh energy storage system series officially rolled off the production line at its Jiangyin factory. The "AC-DC Integrated" series includes two models, 5MWh and 5.6MWh, both housed in standard 20-foot containers, with the 5.6MWh model being the.

This solution is a integrated AC/DC containerized energy storage system developed by Jiangsu Koyoe Energy Technology Co., Ltd. As a backup power supply project, it supports both grid-connected and off-grid operation. The system features two parallel AC/DC integrated energy storage containers with.

At Mayfield Renewables, we routinely design and consult on complex solar-plus-storage projects. In this article, we outline the relative advantages and disadvantages of two common solar-plus-storage system architectures: ac-coupled



and dc-coupled energy storage systems (ESS). Before jumping into.



AC DC integrated solar container energy storage system



Revolutionizing Energy Storage: The Core Value and Advantages of AC-DC

Driven by policy dividends and market demand, AC-DC integrated cabinets are poised to become the mainstream choice for future energy storage systems, leading the ...



Envision Energy Launches "AC-DC Integrated" 5.0/5.6MWh Energy Storage

Unlike the industry's mainstream AC-DC split design solutions, the Envision "AC-DC Integrated" 5.6MWh energy storage system uses an integrated AC-DC design, featuring ...

[Envision Energy Launches "AC-DC Integrated" ...](#)

Unlike the industry's mainstream AC-DC split design solutions, the Envision "AC-DC Integrated" 5.6MWh energy storage ...



Revolutionizing Energy Storage: The Core Value and Advantages ...

Driven by policy dividends and market demand, AC-DC integrated cabinets are poised to become the mainstream choice for future energy storage systems, leading the ...



ESS



AC/DC Integrated Energy Storage System Market Outlook 2025 ...

The global shift toward solar and wind energy is accelerating the adoption of AC/DC integrated energy storage systems. Unlike traditional storage solutions, these systems enhance grid ...

Envision Rolls Out World's Largest 5.6MWh "Integrated AC-DC" Energy

Unlike mainstream AC-DC split design solutions in the industry, the 5.6MWh system adopts an integrated AC-DC design with cluster-level management, eliminating inter ...



[AC vs. DC Coupling Energy Storage Systems -- ...](#)

In this article, we outline the relative advantages and disadvantages of two common solar-plus-storage system architectures: ...

[The World's Largest "AC-DC Integrated" Energy Storage System ...

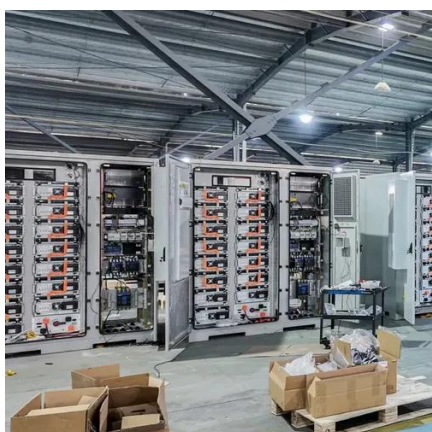


The Envision Energy Storage "AC-DC Integrated" series includes two standard 20-foot container models with capacities of 5MWh and 5.6MWh, among which the 5.6MWh ...



[2500kW/5225kWh AC/DC Integrated Container Energy ...](#)

As a backup power supply project, it supports both grid-connected and off-grid operation. The system features two parallel AC/DC integrated energy storage containers with a total ...



Lishen Releases 5MWh AC and DC Integrated Energy Storage System ...

5MWh AC and DC Integrated Energy Storage System. This new system integrated proprietary 314Ah cells and standardized 2P52S battery modules, along with a string PCS that ...



DC

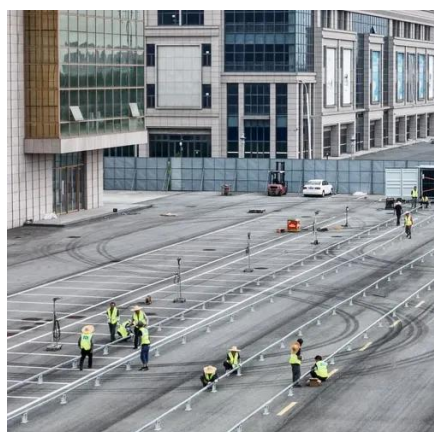
The PVS-500 DC-Coupled energy storage system is ideal for new projects that include PV that are looking to maximize energy yield, minimize interconnection costs, and take advantage of ...



[AC DC integrated energy storage system.](#)



The series includes two standard 20-foot container models with capacities of 5MWh and 5.6MWh, the latter being the world's largest capacity "Integrated AC-DC" energy storage system.



[AC vs. DC Coupling Energy Storage Systems -- Mayfield ...](#)

In this article, we outline the relative advantages and disadvantages of two common solar-plus-storage system architectures: ac-coupled and dc-coupled energy storage systems ...

[Lishen Releases 5MWh AC and DC Integrated ...](#)

5MWh AC and DC Integrated Energy Storage System. This new system integrated proprietary 314Ah cells and standardized 2P52S ...





Contact Us

For catalog requests, pricing, or partnerships, please visit:

<https://www.asimer.es>

Phone: +34 910 56 87 42

Email: info@asimer.es

Scan the QR code to access our WhatsApp.

