



# Area of Boston Energy Storage Project





## Overview

---

The Project will contain approximately 62,000 square feet of Gross Floor Area in a single two-storied building. Each level of the building will contain five approximately 5,000 SF battery energy storage rooms, an exterior equipment platform, an elevator, and three egress stairs.

The Project will contain approximately 62,000 square feet of Gross Floor Area in a single two-storied building. Each level of the building will contain five approximately 5,000 SF battery energy storage rooms, an exterior equipment platform, an elevator, and three egress stairs.

Flatiron Energy LLC, doing business as (d/b/a) Lite Brite Storage LLC (the “Proponent”), is proposing to construct a new two-storied battery energy storage facility at 35 Electric Avenue in the Brighton neighborhood of Boston. The Project will contain approximately 62,000 square feet of Gross Floor.

Flatiron Energy has filed detailed plans for a proposed two-story battery energy storage facility at 35 Electric Ave in Brighton. The approximately 62,000 square feet project is expected to deliver enhanced reliability in the Boston Metropolitan Area. The project is also expected to provide.

Flatiron Energy recently filed a Project Notification Form for “Project Lite Brite,” a 200-megawatt battery energy storage system (BESS) facility located in Brighton, Massachusetts, initiating Article 80 review with the City of Boston. VHB is managing the Article 80 review process for the facility.

The planning board approved the site plan for the Flatiron Energy Energizer Storage battery storage facility proposed for 284 Eastern Ave. at its regular meeting last week. In addition, the board recommended approval of a special permit and variances for the project when it comes before the zoning.

Trimount ESS LLC (the “Company”) filed petitions with the Energy Facilities Siting Board (“Siting Board”) seeking: (1) approval to construct, operate, and maintain two underground transmission lines, one at 115 kilovolt (“kV”) and one at 345 kV; and (2) individual and comprehensive zoning.

Eastern Ave Energy Center is a 250MW Battery Energy Storage System that is in



development in Chelsea, Massachusetts. CME Energy works closely with joint development partner Hecate Energy, and Flatiron Energy in the development of this important project in the Community of Chelsea. Electric Ave.



## Area of Boston Energy Storage Project



### [Plans Now Under Review for Battery Storage ...](#)

Flatiron Energy has filed detailed plans for a proposed two-story battery energy storage facility at 35 Electric Ave in Brighton. The ...

### Massachusetts greenlights 800 MWh battery energy storage ...

The project is located in Carver, Mass. in Eversource territory, and it will connect to an Eversource substation, and as noted previously, will service the whole of the New England ...

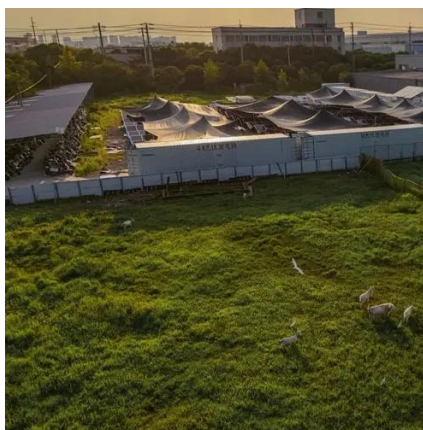


### BESS Projects - CME Energy

Center Street Energy Center that CME is jointly developing with its partner Hecate Energy is a two-phase 600MW Battery Energy Storage System that is in Development in Ludlow, MA.

### Commonwealth Of Massachusetts Energy Facilities Siting Board

The BESS and associated infrastructure are collectively referred to herein as the "Project." A Project description and a map of the Project Site are provided below.



### **Flatiron Battery Energy Storage Project Initiates Planning Review**

Flatiron Energy recently filed a Project Notification Form for "Project Lite Brite," a 200-megawatt battery energy storage system (BESS) facility located in Brighton, ...



### [Commonwealth Of Massachusetts Energy ...](#)

The BESS and associated infrastructure are collectively referred to herein as the "Project." A Project description and a map of the ...



### [Flatiron Battery Energy Storage Project Initiates ...](#)

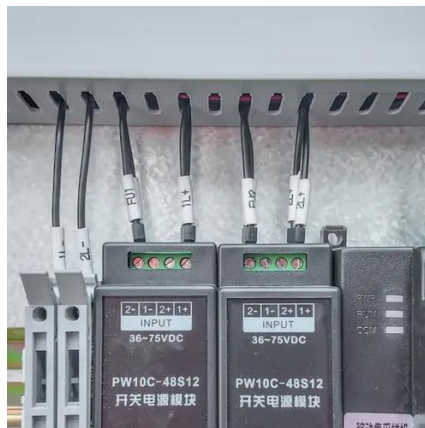
Flatiron Energy recently filed a Project Notification Form for "Project Lite Brite," a 200-megawatt battery energy storage system ...



### **Moraga Energy Storage**



By storing excess renewable energy, BESS ensure a steady supply even when the sun isn't shining or the wind isn't blowing, making the integration of clean energy sources whole.



### Plans Now Under Review for Battery Storage Facility in Brighton

Flatiron Energy has filed detailed plans for a proposed two-story battery energy storage facility at 35 Electric Ave in Brighton. The approximately 62,000 square feet project is ...

### Planning Board Approves Site Plan for Battery Storage Facility

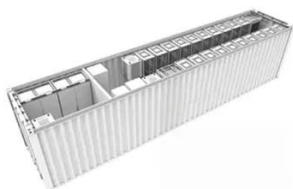
The company has offices in Boston, New York City, and Boulder, Colorado and is currently developing energy storage systems in the Greater Boston, Connecticut, and New ...



TAX FREE

1-3MWh

BESS



### Flatiron

As reported by Energy-Storage.news, Flatiron is developing another larger 300MW/1.2GWh BESS located in the Boston neighbourhood of Brighton, Massachusetts, ...

35 Electric Avenue , Bostonplans



The Project will contain approximately 62,000 square feet of Gross Floor Area in a single two-storied building. Each level of the building will contain five approximately 5,000 SF battery ...



### [Medway Battery Energy Storage System](#)

The developers represent the largest portfolio of BESS development assets in Massachusetts with four projects in the Greater Boston Area and two projects in the Worcester and Springfield ...



## Contact Us

---

For catalog requests, pricing, or partnerships, please visit:

<https://www.asimer.es>

Phone: +34 910 56 87 42

Email: [info@asimer.es](mailto:info@asimer.es)

Scan the QR code to access our WhatsApp.

