



Base station communication engineering for operators





Overview

In this article, we target the audience of Wireless Communications Engineers working within Telecommunications Carriers, and we discuss comprehensive strategies for base station design that integrate cutting-edge engineering with powerful business intelligence and data.

In this article, we target the audience of Wireless Communications Engineers working within Telecommunications Carriers, and we discuss comprehensive strategies for base station design that integrate cutting-edge engineering with powerful business intelligence and data.

In this article, we target the audience of Wireless Communications Engineers working within Telecommunications Carriers, and we discuss comprehensive strategies for base station design that integrate cutting-edge engineering with powerful business intelligence and data analytics. The modern.

A base station represents an access point for a wireless device to communicate within its coverage area. It usually connects the device to other networks or devices through a dedicated high bandwidth wire of fiber optic connection. Base stations typically have a transceiver, capable of sending and.

Most of the current research is based on the performance of the base station (BS) itself or the operation mode of the communication operator without considering the users' needs and signal overlapping coverage. The main research content of this paper is to study the information about the existing.

Huawei offers a range of FMC solutions to address the challenges faced by mobile operators during full-service transformation. These operators own many base stations, so Huawei provided the idea of "base station operation", aiming to help them rapidly build fixed networks through fixed-mobile.

A base station connects your phone to the network. It acts as a hub between mobile devices and the core system. Base stations form the backbone of 4G LTE and 5G networks. They provide the coverage you need for calls and data. Base stations enable voice, data, and internet access. They transmit.

Mobile network operators invested billions of dollars in the development and



modernization of infrastructure, building new telecommunications towers, developing fiber-optic networks and implementing modern data transmission technologies. As a result, modern mobile networks are able to handle.



Base station communication engineering for operators



Basestation

Because of the widespread use of modular techniques, the distinction between transmitter and receiver measurements is more marked in the base station than in the mobile station. To ...

[\(PDF\) Accurate Base Station Placement in 4G LTE Networks ...](#)

An important component of 4G LTE network planning is the proper placement of evolved node base stations (eNodeBs) and the configuration of their antenna elements.



[Base Station Operation Increases the Efficiency of Network](#)

Base station operation allows mobile operators to fully use existing base stations, realize fixed-mobile backhaul sharing, and flexibly and rapidly roll out network coverage, without requiring ...

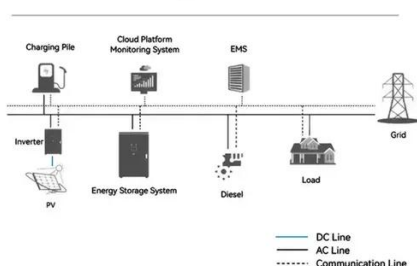


[\(PDF\) Accurate Base Station Placement in 4G LTE ...](#)

An important component of 4G LTE network planning is the proper placement of evolved node base stations (eNodeBs) and the ...



System Topology

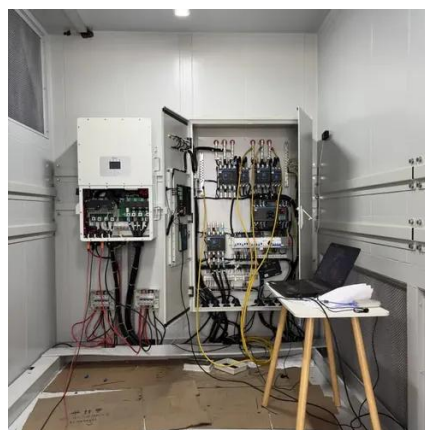


What Is A Base Station?

Base stations play a central role in two-way radio systems, such as citizens band (CB) radio and ham radio. In these setups, the base station serves as a fixed point of ...

[The Base Station in Wireless Communications: ...](#)

Equipped with an electromagnetic wave antenna, often placed on a tall mast, the base station enables communication between ...



[Base Station Design for Wireless Communications Engineers](#)

In this article, we target the audience of Wireless Communications Engineers working within Telecommunications Carriers, and we discuss comprehensive strategies for base station ...



[The Base Station in Wireless Communications: The Key to ...](#)



Equipped with an electromagnetic wave antenna, often placed on a tall mast, the base station enables communication between mobile terminals (such as mobile phones or ...



Research and Application of Automated Intelligent Planning ...

The engineering parameters of communication base stations are the core assets of telecommunication operators. It directly determines the quality of the network.

Base Stations

Base stations form a key part of modern wireless communication networks because they offer some crucial advantages, ...



[What are Base Station in Telecommunications?](#)

Base stations contain several key parts. The antenna sends and receives radio energy. The transceiver handles signal modulation. The baseband processor converts signals to digital ...

Base Stations



Base stations form a key part of modern wireless communication networks because they offer some crucial advantages, such as wide coverage, continuous communications and ...



[Optimizing redeployment of communication base station](#)

In this paper, the major work is to solve the "blind spot" of 5G existing network BSs. In other words, it aims to solve the signal coverage problem of weak coverage points on the ...

What Is A Base Station?

Base stations play a central role in two-way radio systems, such as citizens band (CB) radio and ham radio. In these setups, the ...





Contact Us

For catalog requests, pricing, or partnerships, please visit:

<https://www.asimer.es>

Phone: +34 910 56 87 42

Email: info@asimer.es

Scan the QR code to access our WhatsApp.

