



# Base station communication equipment is placed on the roof

Test certification  
CE  FC 





## Overview

---

According to documents leaked to Der Spiegel, the NSA sells a \$40,000 "active GSM base station" to be used as a tool to mimic a mobile phone tower and thus monitor cell phones. In November 2014, it was reported that the Technical Operations Group of the U.S. Marshals utilizes spy devices, known as "dirtboxes", to mimic powerful cell tower signals. Such devices are designed to cause mobile phones to switch over to the tower, as it is the strongest.

A cell site (or cell tower, or cellular base station) is a cellular-enabled mobile device site where antennae and electronic communications equipment are placed - typically on a radio mast, tower, or other raised structure - to create a cell (or adjacent cells) in a cellular network.

A cell site (or cell tower, or cellular base station) is a cellular-enabled mobile device site where antennae and electronic communications equipment are placed - typically on a radio mast, tower, or other raised structure - to create a cell (or adjacent cells) in a cellular network.

Rooftop cell sites, also known as rooftop telecommunication towers, are critical for delivering high-speed mobile and internet services in space-constrained urban environments. Whether you're a telecom operator seeking efficient network solutions or a property owner exploring passive income through real estate, rooftop cell sites offer a viable option.

A cell site, cell phone tower, cell base tower, or cellular base station is a cellular-enabled mobile device site where antennas and electronic communications equipment are placed (typically on a radio mast, tower, or other raised structure) to create a cell, or adjacent cells, in a cellular network.

Base station antennas are also known as cell site antennas and cellular antennas, and they are typically mounted on a tower or rooftop and connected to a base station through coaxial cables. Base station antennas are available in different shapes and sizes and can be either omnidirectional antennas.

A Cell Site refers to the antenna equipment and ground equipment that is used to transmit cell phone signals to and from the mobile phone back to the receiver. This equipment is likely to include transmitter/receivers, GPS, backup power sources, base transceiver station (BTS), and more. Do you?

From a high altitude in the city, the tower base stations on rooftops resemble steel



guardians standing at the top of various buildings. It belongs to a type of macro base station, usually consisting of towering iron towers, dense antenna arrays, and supporting communication equipment rooms. These.

Rooftop Tower, also known as rooftop telecom angular tower or rooftop base station, serves as a steel supporting structure designed for communication systems. These towers mount directly on buildings to reduce height requirements and overall costs. They accommodate various antenna loads for.



## Base station communication equipment is placed on the roof



TAX FREE

1-3MWh

BESS



### [What Are Base Station Antennas? Complete Guide](#)

Base station antennas are also known as cell site antennas and cellular antennas, and they are typically mounted on a tower or rooftop and connected to a base station through ...

### [Safe Operations Near Roof Cellular Base Stations](#)

Today, you can find cell antennas on virtually any type of building and any type of occupancy in your district. The area you live in may be an indicator of the type of antenna ...



### Cell site

SummarySpy agency  
setupOverviewOperationTemporary  
sitesEmploymentOff-grid systemsCamouflage

According to documents leaked to Der Spiegel, the NSA sells a \$40,000 "active GSM base station" to be used as a tool to mimic a mobile phone tower and thus monitor cell phones. In November 2014, The Wall Street Journal reported that the Technical Operations Group of the U.S. Marshals utilizes spy devices, known as "dirtboxes", to mimic powerful cell tower signals. Such devices are designed to cause mobile phones to switch over to the tower, as it is the stron...

### Rooftop tower base station: the 'invisible communication giant' ...



They are firmly rooted on the roof and serve as the "threading pin" for communication networks. As a crucial part of the modern communication system, rooftop ...



### [Safe Operations Near Roof Cellular Base Stations](#)

Today, you can find cell antennas on virtually any type of building and any type of occupancy in your district. The area you live in ...

### [Understanding Rooftop Telecom Towers: Types and Applications](#)

Rooftop telecom towers, often called rooftop cell towers or roof top antenna towers, are specialized structures installed on building rooftops to support antennas and equipment for ...



### **Rooftop Tower Manufacturer**

Rooftop Tower, also known as rooftop telecom angular tower or rooftop base station, serves as a steel supporting structure designed for communication systems. These towers mount directly ...

### **Base Stations**



The present-day tele-space is incomplete without the base stations as these constitute an important part of the modern-day scheme ...



### [What Are Base Station Antennas? Complete Guide](#)

Base station antennas are also known as cell site antennas and cellular antennas, and they are typically mounted on a tower or ...

### Types of Cell Sites

Its antennas and equipment are placed on the roof (or very top), typically with the antennas mounted near or on the parapet of the roof so that they can communicate in all ...



### [Human Exposure to Radio Frequency Fields: Guidelines for ...](#)

Primary antennas for transmitting wireless telephone service, including cellular and Personal Communications Service (PCS), are usually located outdoors on towers, water tanks ...



### Base Stations



The present-day tele-space is incomplete without the base stations as these constitute an important part of the modern-day scheme of wireless communications. They are ...



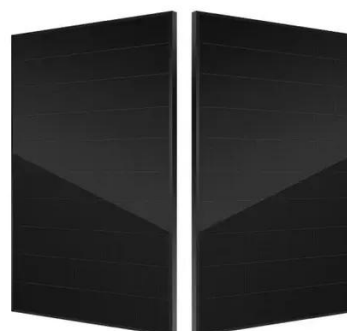
### Cellular Networks, Cells, and Base Stations -- EITC

A cell site (or cell tower, or cellular base station) is a cellular-enabled mobile device site where antennae and electronic communications equipment are placed - typically ...



### Rooftop tower base station: the 'invisible ...

They are firmly rooted on the roof and serve as the "threading pin" for communication networks. As a crucial part of the modern ...



### **Cell site**

According to documents leaked to Der Spiegel, the NSA sells a \$40,000 "active GSM base station" to be used as a tool to mimic a mobile phone tower and thus monitor cell phones.



## Contact Us

---

For catalog requests, pricing, or partnerships, please visit:

<https://www.asimer.es>

Phone: +34 910 56 87 42

Email: [info@asimer.es](mailto:info@asimer.es)

Scan the QR code to access our WhatsApp.

