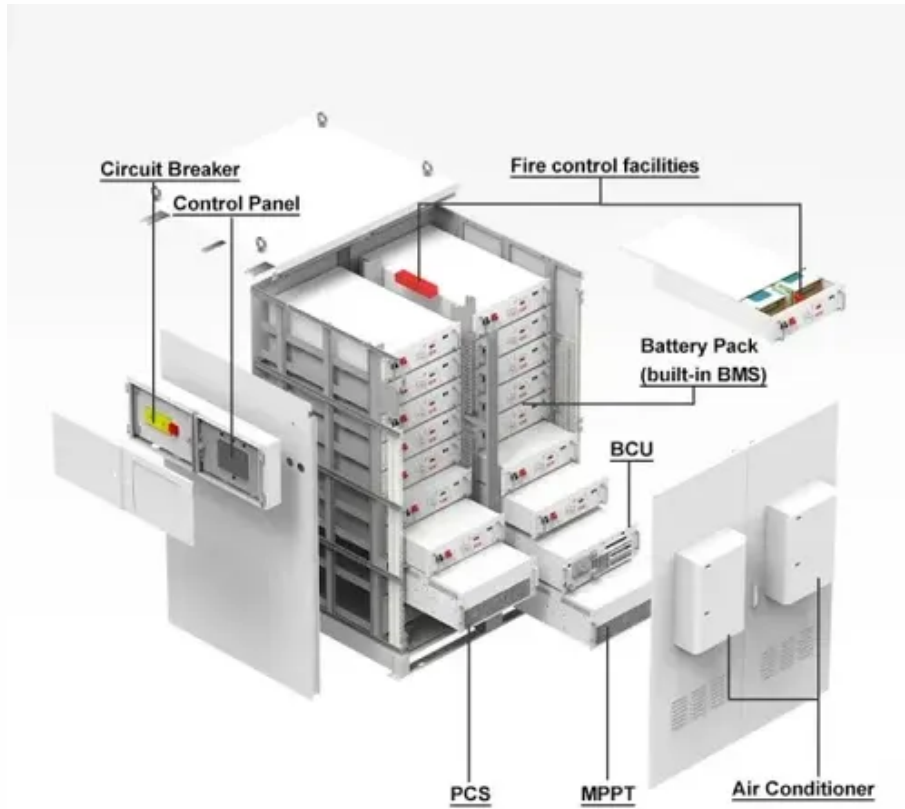




# Battery BMS affects battery life





## Overview

---

A Battery Management System (BMS) plays a crucial role in maintaining battery health by monitoring voltage levels, managing charge cycles, balancing cells, and providing safety features such as over-voltage protection. This ensures optimal performance and prolongs the lifespan of the.

A Battery Management System (BMS) plays a crucial role in maintaining battery health by monitoring voltage levels, managing charge cycles, balancing cells, and providing safety features such as over-voltage protection. This ensures optimal performance and prolongs the lifespan of the.

The Battery Management System (BMS) is a crucial component in all types of electric vehicle (EV) batteries, ensuring they operate safely, efficiently, and last longer. Whether it's Lithium-Ion, Nickel-Metal Hydride (NiMH), or any other battery type, the BMS monitors key factors like voltage.

The BMS acts as a safeguard against overcharging, deep discharging, overheating, and other factors that can lead to battery degradation or failure. A BMS performs several key functions that work together to monitor performance, protect against damage, and ensure long-term reliability. Below are.

A Battery Management System (BMS) significantly impacts the overall lifespan of a battery system by addressing key factors that contribute to battery degradation. Here's how a BMS enhances battery longevity: Monitoring and Control: A BMS continuously monitors critical parameters like voltage.

A Battery Management System (BMS) is a pivotal component in the effective operation and longevity of rechargeable batteries, particularly within lithium-ion systems like LiFePO4 batteries. Understanding the functions and benefits of a BMS can provide insights into how it preserves battery health.

Battery Management Systems (BMS) are crucial components in the realm of energy storage and management. They serve as a sophisticated electronic control unit designed to monitor and manage rechargeable battery packs, ensuring safe, reliable, and efficient operation. The importance of BMS has.

Cycle life refers to the number of charge and discharge cycles a battery can



undergo before its capacity falls below a certain threshold, typically 80% of its original capacity. It is a crucial parameter in determining the overall lifespan and health of a battery. A longer cycle life indicates a.



## Battery BMS affects battery life

---



### How does a BMS impact the overall lifespan of a battery system

A Battery Management System (BMS) significantly impacts the overall lifespan of a battery system by addressing key factors that contribute to battery degradation.

### [What is Battery Management System\(BMS\) and ...](#)

Battery Health & Lifespan - A well-functioning BMS ensures your battery lasts longer and doesn't degrade quickly. Performance - It ...



### [What Is BMS on a Lithium Battery? A Complete ...](#)

It ensures the battery works within safe limits, prevents damage from extreme conditions, and maximizes the lifespan of the cells. ...



### How Does a BMS Work? Battery Management System Explained ...

Does a BMS affect the battery's lifespan? Yes, a BMS is essential for increasing battery life since it keeps balanced charging, makes sure each cell functions within safe bounds, and guards ...



### [Whitepaper: Understanding Battery Management Systems ...](#)

A well-designed BMS minimizes the wear and tear on the battery, leading to a longer operational life. For example, by preventing deep discharge or extreme overcharging, the BMS preserves ...



### **Cycle Life in BMS: Ultimate Guide**

Cycle life refers to the number of charge and discharge cycles a battery can undergo before its capacity falls below a certain threshold, typically 80% of its original ...



### [How BMS Works on Batteries in EV: Boosting Performance. ...](#)

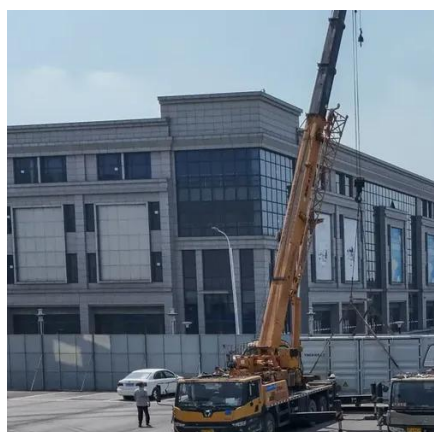
Without the BMS, issues like overcharging, overheating, or reduced battery life could cause problems. By balancing cells, controlling charging and discharging, and ...



### **What is Battery Management System(BMS) and how does it affect ...**



Battery Health & Lifespan - A well-functioning BMS ensures your battery lasts longer and doesn't degrade quickly. Performance - It helps maintain optimal power delivery, ...

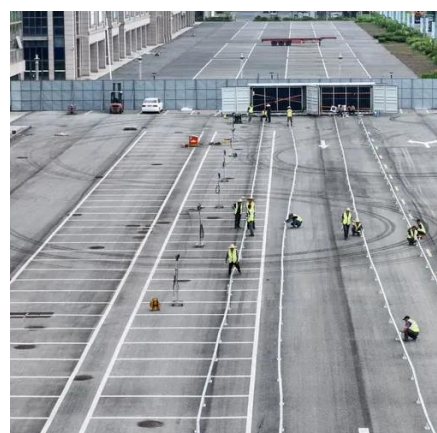


### **What Is BMS on a Lithium Battery? A Complete Guide to Its Role**

It ensures the battery works within safe limits, prevents damage from extreme conditions, and maximizes the lifespan of the cells. Think of it as the "brain" of the battery pack ...

### [Understanding Battery Management Systems \(BMS\): The Key to ...](#)

Learn about the key components, charging and discharging processes, and how BMS contributes to prolonged battery life. Understand the critical safety mechanisms implemented to prevent ...



### [The Crucial Role of a Battery Management System \(BMS\) in ...](#)

Understanding the functions and benefits of a BMS can provide insights into how it preserves battery health and ensures optimal performance. This article explores the essential ...

### [How Battery Management Systems \(BMS\) Prevent Battery ...](#)



The BMS monitors and manages various aspects of battery operation, ensuring efficient and reliable performance. Learn how its role can help users prevent battery failures ...



### [How does a BMS impact the overall lifespan of a ...](#)

A Battery Management System (BMS) significantly impacts the overall lifespan of a battery system by addressing key factors that ...



## Contact Us

---

For catalog requests, pricing, or partnerships, please visit:

<https://www.asimer.es>

Phone: +34 910 56 87 42

Email: [info@asimer.es](mailto:info@asimer.es)

Scan the QR code to access our WhatsApp.

