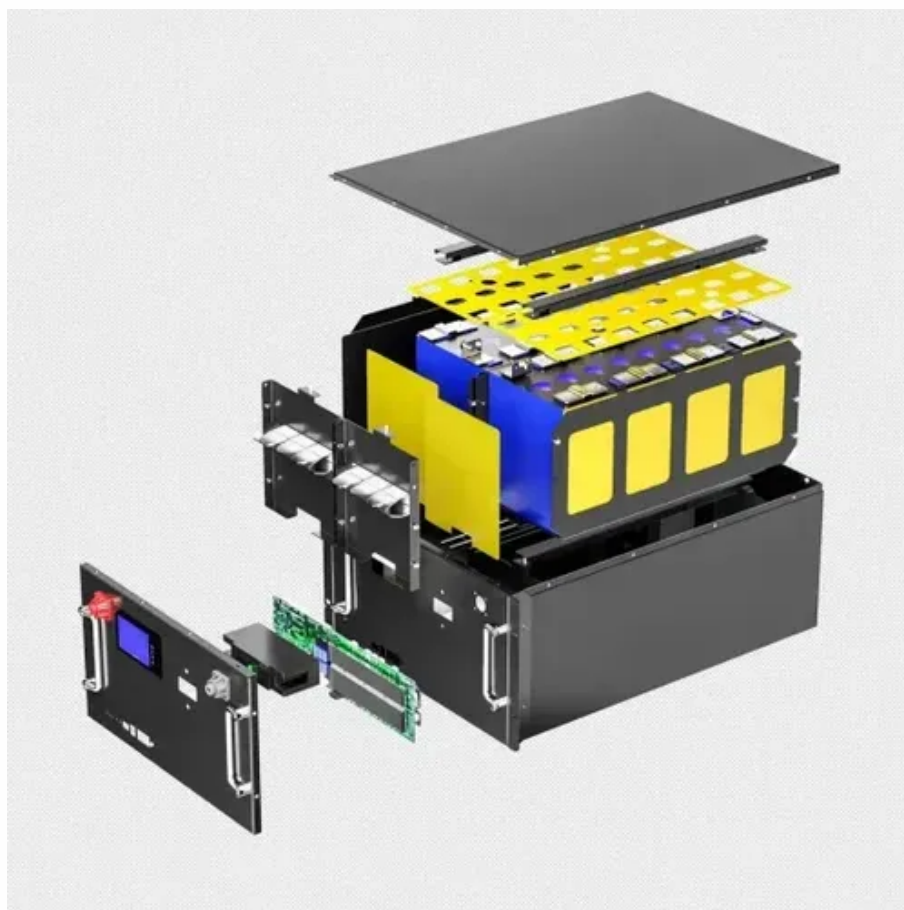




# Battery cabinet current displays negative numbers





## Overview

---

A ground fault can introduce a parallel path for current flow, resulting in a negative reading on the ammeter connected in the main circuit. In a battery-powered circuit, a negative ammeter reading can indicate that the battery is discharging and providing.

A ground fault can introduce a parallel path for current flow, resulting in a negative reading on the ammeter connected in the main circuit. In a battery-powered circuit, a negative ammeter reading can indicate that the battery is discharging and providing.

You're measuring voltage or current with your multimeter, but instead of a normal reading, the display shows a negative sign in front of the number. Or you're testing a component and confused about why the reading is negative when you expected positive. Seeing negative readings on a multimeter.

A digital multimeter (DMM) is an essential tool for measuring voltage, current, resistance, and more. But what if your meter starts showing incorrect values—or no reading at all?

If you're getting strange numbers or inconsistent results, don't panic. In most cases, it's a simple fix. Here are the 8.

A negative voltage indicates that the polarity of the connection is reversed, showing that the voltage at the point being measured is lower than the reference point. This can happen if I accidentally swap the leads on my multimeter or if there are specific conditions in the electrical circuit I am.

The BMV normally shows positive when charging and negative when discharging. Have you got the shunt wired the correct way around with all negatives to the shunt system side and only the shunt connected to the battery. The other issue may be a slight out of calibration error, the manual has a zero.

Understanding why your multimeter might display a negative reading is crucial for accurate diagnostics and effective troubleshooting in any electrical or electronic endeavor. It's not just about getting a number; it's about interpreting that number within the context of the circuit you're.



Why does the battery show a negative voltage when tested with a voltmeter?

This can happen for a variety of reasons, including: You may have measured incorrectly. Ensure that the plus and minus poles are measured with the voltmeter's corresponding measuring ends. There will be a negative voltage if.



## Battery cabinet current displays negative numbers



### [Why Is My Multimeter Reading Negative?](#)

Battery Measurement: If you place the red lead on the negative terminal of a battery and the black lead on the positive terminal, your multimeter will display a negative ...

### [Are negative values correct when just charging ....](#)

I've been wondering this for a while now but are my BMV-712 values supposed to show negative while just charging? Here are a few ...



### **Multimeter Display Shows Negative Sign: Understanding Polarity ...**

Using a clamp meter to measure DC current, the display shows a negative value. This is normal behavior and indicates current direction relative to clamp orientation.

### [Why is My Multimeter Reading Negative?](#)

If I see a negative current, it means the current flows in the reverse direction. Recognizing these readings helps me diagnose issues ...



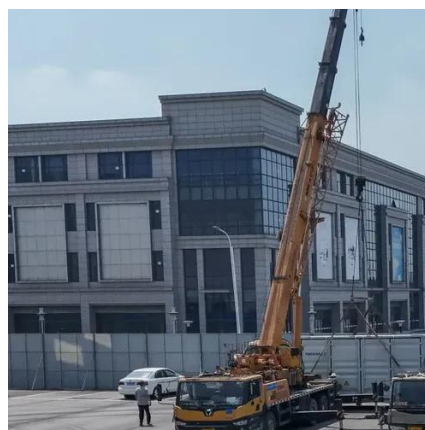
### [Battery Monitor shows negative volts](#)

I installed a 200 amp lithium battery, 2000 watt inverter, 40 amp MPPT and 20 amp MPPT with a battery monitor shown below but there is an error in reading voltage, amps ...



### [Why Is My Multimeter Showing Wrong Values? - BsideMeter](#)

Conclusion Multimeters are powerful tools, but they rely on proper setup and care. If your BSIDE or other digital multimeter is showing wrong values, go through this checklist ...



### [Are negative values correct when just charging battery?](#)

I've been wondering this for a while now but are my BMV-712 values supposed to show negative while just charging? Here are a few pics to show you what I mean. Everything ...



### **Electrical Anomaly: Why is My Ammeter Measuring Negative Current ...**



However, sometimes, an ammeter can display a negative reading, leaving you perplexed. This blog post delves into the reasons behind a negative ammeter reading, ...



### Multimeter negative: uncover the hidden reasons behind the ...

Why does my multimeter show a negative voltage when I measure a battery? This indicates that the positive terminal of the battery is connected to the negative terminal of the ...

### Why is My Multimeter Reading Negative? Understanding the ...

If I see a negative current, it means the current flows in the reverse direction. Recognizing these readings helps me diagnose issues in the electrical circuit effectively.



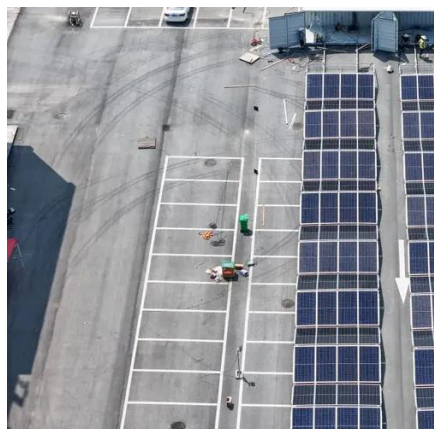
### [Multimeter Display Shows Negative Sign: ...](#)

Using a clamp meter to measure DC current, the display shows a negative value. This is normal behavior and indicates current ...

### [Electrical Anomaly: Why is My Ammeter Measuring Negative ...](#)



However, sometimes, an ammeter can display a negative reading, leaving you perplexed. This blog post delves into the reasons behind a negative ammeter reading, ...



### **Why does the battery show a negative voltage when tested with a**

Ensure that the plus and minus poles are measured with the voltmeter's corresponding measuring ends. There will be a negative voltage if they are switched. If the poles of your voltmeter are ...

### [Negative Ammeter Conundrum: Unraveling the Mystery](#)

In a battery-powered circuit, a negative ammeter reading can indicate that the battery is discharging and providing current in the opposite direction. 1. Check Connections: ...





## Contact Us

---

For catalog requests, pricing, or partnerships, please visit:

<https://www.asimer.es>

Phone: +34 910 56 87 42

Email: [info@asimer.es](mailto:info@asimer.es)

Scan the QR code to access our WhatsApp.

