



# Battery cabinet testing process





## Overview

---

Energy storage test cabinets implement standardized methods to conduct these assessments, facilitating effective benchmarking against industry norms. Testing within these cabinets typically involves charging and discharging cycles to determine how much energy a battery can hold and.

Energy storage test cabinets implement standardized methods to conduct these assessments, facilitating effective benchmarking against industry norms. Testing within these cabinets typically involves charging and discharging cycles to determine how much energy a battery can hold and.

Our testing and certification services help BCE manufacturers demonstrate compliance to safety standards. Lithium-ion batteries are present in an increasing variety of popular items but can present serious safety concerns due to fire-related risks known as “thermal runaway.” UL 1487, the Standard.

Y is aware that OSHA recognition for UL 1487 and UL 4900 is underway. With the expectation that NRTLs will receive OSHA recognition for UL 1487 and UL 4900 testing within the near future, the FDNY will accept UL 1487 and UL 4900 testing performed by a NR ng equipment and components are certified up.

The energy storage test cabinet primarily assesses the performance and reliability of energy storage systems, including batteries and other related technologies. 1. Key evaluations encompass capacity, efficiency, cycle life, and safety protocols. 2. These cabinets conduct simulated real-life.

Battery testing is the process of evaluating a battery’s condition, performance, and remaining capacity. It involves checking parameters like voltage, current, internal resistance, and temperature to assess how well the battery holds and delivers power. In practical settings—like stores, hospitals.

Forward-thinking manufacturers adopt a 4-phase approach: Singapore's Energy Market Authority recently fast-tracked a modular battery system using this methodology, achieving certification in 11 weeks versus the typical 26-week timeline. Emerging solutions show promise: When we assisted a German.

Aging Equipment is used to perform aging tests on lithium-ion battery packs,



simulating the working conditions of the batteries in actual use. Through long-term charge-discharge cycling and temperature changes, it tests the reliability, stability, and lifespan of the battery packs. The main. What is a battery test chamber?

Battery test chambers are generic tools for testing battery performance in harsh environments. Properly used, they render battery-powered products safe, long-lasting, and reliable by simulating actual conditions of stress, including temperature, humidity, and vibration.

How does a battery test work?

The battery is subject to testing under severe conditions like high/low temperature, humidity, or vibration. This allows one to ascertain how the battery is going to behave in real environments, particularly in tough or demanding uses. This entails mimicking hazardous conditions such as short circuit, overcharge, puncture, or burning.

What is battery testing?

Battery testing is a set of controlled tests that evaluate a battery's performance, capacity, safety, and life expectancy. It informs manufacturers, researchers, and users about battery behavior under a wide range of environmental, electrical, and mechanical conditions. What are the Different Types of Battery Testing?

.

Why is battery safety testing in an environmental test chamber important?

Battery safety testing in an environmental test chamber can help keep people and products safety. Weiss Technik provides pre-engineered battery test and battery safety chambers. Click to learn more.



## Battery cabinet testing process

---



### Testing and Certification for Battery Containment Enclosures (BCE)

We deliver a testing and certification program to evaluate BCE equipment, helping manufacturers create products that comply to safety standards.

### [Battery Testing on Formation Cabinet](#)

In the video, we take you behind the scenes to see how our LiFePO<sub>4</sub> battery modules are carefully tested on the formation cabinet the heart of our quality control process.



### [What are the Steps in Battery Testing? A Complete ...](#)

Discover the essential steps in battery testing, from preparation to analysis, ensuring safety, performance, and reliability in ...

### [What does the energy storage test cabinet test? NenPower](#)

Testing within these cabinets typically involves charging and discharging cycles to determine how much energy a battery can hold and release. During this process, the testing ...

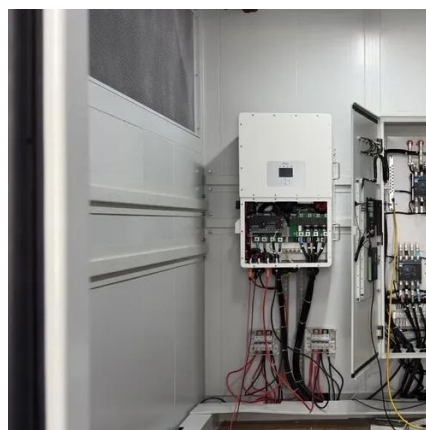


### **Comprehensive Guide to Battery Aging Cabinet and Temperature ...**

Through long-term charge-discharge cycling and temperature changes, it tests the reliability, stability, and lifespan of the battery packs. The main equipment includes the Battery Aging ...

### [Equipment Review for Battery Charging Cabinets. ...](#)

Property owner or manager must have submitted a request for a FDNY battery cabinet site survey inspection via the FDNY Business Portal by September 1, 2025. The FDNY may take into ...



### **Battery Test Chambers**

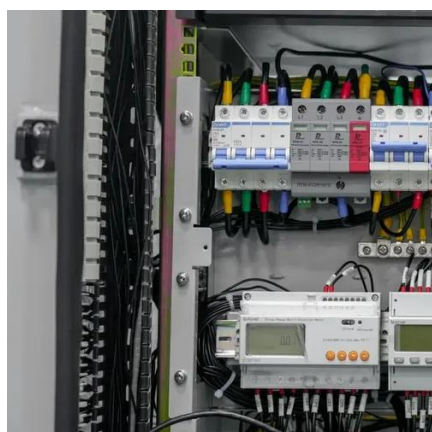
Learn more about our complete battery test chambers including reach in, walk in and custom solutions. For a breakdown of battery testing and why incorporating it into your process is ...



### [Battery Cabinet Certification Process , Huijue Group E-Site](#)



Industry leaders suggest hybrid approaches will dominate through 2030, but the writing's on the wall: The battery cabinet certification process isn't just about compliance ...

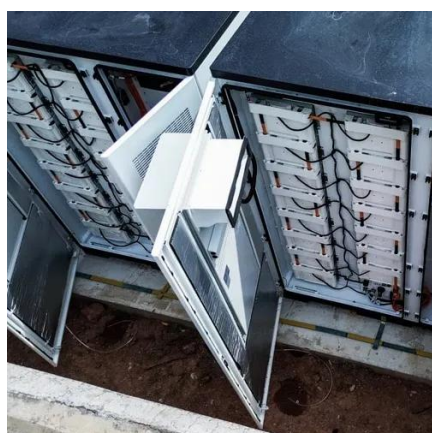


### [What are the Steps in Battery Testing? A Complete Guide](#)

Discover the essential steps in battery testing, from preparation to analysis, ensuring safety, performance, and reliability in every battery system.

### [Lithium-Ion Battery Testing Solutions by Semco Infratech](#)

With 192 independent testing channels, this system enables simultaneous testing of 1 to 10 lithium battery packs, each with dedicated electrical parameter control and unified process timing.



### **Battery testing guide**

Make capacity test annually when the battery has reached 85% of expected service life or if the capacity has dropped more than 10% since the previous test or is below 90% of the ...

### [Testing and Certification for Battery Containment](#)

...



We deliver a testing and certification program to evaluate BCE equipment, helping manufacturers create products that comply to safety standards.





## Contact Us

---

For catalog requests, pricing, or partnerships, please visit:

<https://www.asimer.es>

Phone: +34 910 56 87 42

Email: [info@asimer.es](mailto:info@asimer.es)

Scan the QR code to access our WhatsApp.

