



Can 12v solar container lithium battery be used with inverter





Overview

One of the most important factors when matching a lithium solar battery with an inverter is voltage compatibility. The voltage of the battery and the inverter must match. For example, if you have a 12V battery, you'll need a 12V inverter.

One of the most important factors when matching a lithium solar battery with an inverter is voltage compatibility. The voltage of the battery and the inverter must match. For example, if you have a 12V battery, you'll need a 12V inverter.

Matching a lithium solar battery with an inverter is a crucial step in setting up an efficient solar power system. As a supplier of lithium solar batteries, I've seen firsthand how the right combination can make a huge difference in performance and longevity. In this blog, I'll share some tips on.

When setting up solar energy systems or home energy storage, a common question arises: Are lithium batteries compatible with all inverters?

The short answer is no - proper inverter matching is crucial for optimal performance and safety. Let's examine the key compatibility factors for lithium.

Yes, a solar battery can work with a normal inverter. Both have different charging methods and chemical types. Ensure that the inverter's voltage and capacity match the solar battery's specifications. This compatibility is crucial for the electrical system to perform efficiently and maximize the.

Yes, a solar battery can be used with a normal inverter, but it depends on the inverter type and battery compatibility. Many homeowners exploring renewable energy options wonder if they can connect a solar battery to their existing inverter. The idea is appealing—leveraging stored solar energy.

However, one key factor that determines the overall performance of a power backup system is the compatibility between the inverter and the lithium battery. This compatibility is often overlooked, but it is crucial for achieving optimal performance, safety, and the longevity of both components.

A lithium battery for inverter is a rechargeable battery that uses lithium-ion technology to store energy. It works with inverters by delivering direct current



(DC), which the inverter transforms into alternating current (AC) to power home appliances, RV electronics, or off-grid systems. Lithium.



Can 12v solar container lithium battery be used with inverter



[Can Lithium Batteries Work With Any Type of Inverter?](#)

The short answer is no - proper inverter matching is crucial for optimal performance and safety. Let's examine the key compatibility factors for lithium battery and LiFePO4 battery ...

[Importance of Compatibility Between Inverter and ...](#)

Lithium batteries are known for their longevity, but their lifespan can be significantly shortened if paired with an incompatible ...



[Lithium Battery for Inverter: Pros, Specs, and Tips](#)

Can I replace my lead-acid battery with lithium in my inverter system? Yes, but you must ensure your inverter and charger are ...



[Can a Solar Battery Be Used With a Normal Inverter?](#)

Yes, normal inverters can support a solar battery system, but crucial factors must be considered to ensure compatibility and optimal performance. Understanding how the ...



Can Lithium Batteries Work With Any Type of ...

The short answer is no - proper inverter matching is crucial for optimal performance and safety. Let's examine the key compatibility ...

Lithium Battery for Inverter: Pros, Specs, and Tips

Can I replace my lead-acid battery with lithium in my inverter system? Yes, but you must ensure your inverter and charger are compatible with lithium charging profiles.



Compatibility of Lithium-Ion Batteries with Existing ...

Integrating a solar inverter with a lithium battery can take your renewable energy setup to the next level. This combination allows for better energy ...

How to Pair Hybrid Inverters with a 12V LiFePO4 ...



Unlock peak performance from your 12V LiFePO4 battery. This guide details how to pair a hybrid inverter, covering critical ...



Compatibility of Lithium-Ion Batteries with Existing Inverters

Integrating a solar inverter with a lithium battery can take your renewable energy setup to the next level. This combination allows for better energy storage, improved efficiency, and greater ...

[How do I match a lithium solar battery with an ...](#)

One of the most important factors when matching a lithium solar battery with an inverter is voltage compatibility. The voltage of the ...



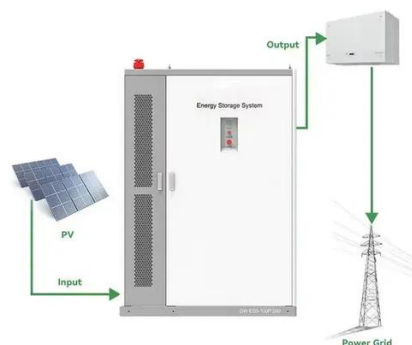
Can I Use Solar Battery in Normal Inverter for Efficient Solar Energy Use?

Yes, a solar battery can be used with a regular inverter, but certain conditions must be met. Make sure the inverter's specifications match the battery's output requirements, ...

Importance of Compatibility Between Inverter and Lithium Battery



Lithium batteries are known for their longevity, but their lifespan can be significantly shortened if paired with an incompatible inverter. Inverters that are not designed to work with ...



[How to Pair Hybrid Inverters with a 12V LiFePO4 Battery](#)

Unlock peak performance from your 12V LiFePO4 battery. This guide details how to pair a hybrid inverter, covering critical compatibility checks, connection steps, and ...

[Solar Inverters with Lithium Batteries](#)

When you install a solar power system with a lithium battery, you typically use a hybrid inverter. This type of inverter not only converts the DC electricity from the solar panels ...



[Solar Inverters with Lithium Batteries](#)

When you install a solar power system with a lithium battery, you typically use a hybrid inverter. This type of inverter not only converts ...



[Can A Solar Battery Be Used With A Normal Inverter?](#)



No, a solar battery cannot be used with a normal inverter without additional modifications. Normal inverters are typically designed for direct connection to the grid or for ...



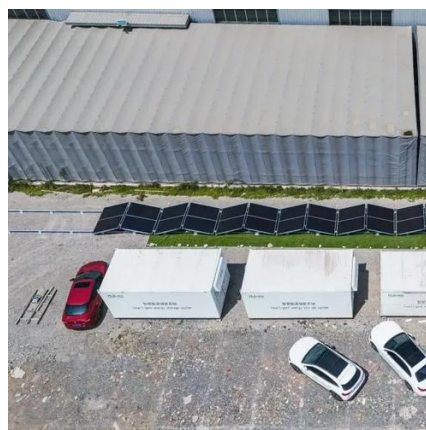
Can I Use Solar Battery in Normal Inverter for Efficient Solar ...

Yes, a solar battery can be used with a regular inverter, but certain conditions must be met. Make sure the inverter's specifications match the battery's output requirements, ...



How do I match a lithium solar battery with an inverter?

One of the most important factors when matching a lithium solar battery with an inverter is voltage compatibility. The voltage of the battery and the inverter must match. For ...





Contact Us

For catalog requests, pricing, or partnerships, please visit:

<https://www.asimer.es>

Phone: +34 910 56 87 42

Email: info@asimer.es

Scan the QR code to access our WhatsApp.

