



Can a 12v inverter be connected to 13V





Overview

Yes, you can attach a small inverter directly to a battery, but doing it safely requires understanding voltage compatibility, wire sizing, and overload risks. Many DIYers assume it's as simple as clipping on cables—until sparks fly or devices fail.

Yes, you can attach a small inverter directly to a battery, but doing it safely requires understanding voltage compatibility, wire sizing, and overload risks. Many DIYers assume it's as simple as clipping on cables—until sparks fly or devices fail.

Yes, you can attach a small inverter directly to a battery, but doing it safely requires understanding voltage compatibility, wire sizing, and overload risks. Many DIYers assume it's as simple as clipping on cables—until sparks fly or devices fail. Modern lithium batteries and high-efficiency.

I have a travel trailer with a lithium battery bank (voltages range from 12.7 V to 13.3 V) The battery bank is hooked up to the fusebox that supplies DC power to some electronics in the trailer. I want to install a new exhaust fan for our toilet, and the small fan runs at 12 V, 0.05 A. When I hook.

LiFePO4 batteries can charge to 14.4V during PV input times. This is higher than 12.6V for previous AGM batteries. The 14.4V is adjustable, and after charging the V value is reduced to 13.6V. My question is, can the 12V inverter still function as reliably under these higher 14.4V overvoltages?

And.

Connecting inverters to batteries is an important part of an off-grid power solution or backup power system, and the right connections ensure that the system runs efficiently. This article will explore in detail how inverters and batteries work together, how to connect them correctly, and how to.

Connecting an inverter to a battery is a crucial step in setting up a reliable off-grid power solution or backup energy system. This setup ensures that the energy stored in the battery can be converted into usable AC power to run appliances and devices during power outages or in remote locations.

What should I do to convert 12v to 13v?



1. I am using lithium battery 3s whose output when full charged is 12.6 so I need 13v to charge it, I have adopter 12.22v I need to boost the voltage. Is there any way which transfer is best that work without producing too much heat I don't want to use xl6009.



Can a 12v inverter be connected to 13V



[How to Safely Connect a Battery to an Inverter: A ...](#)

Learn how to safely connect your batteries to your inverter with our guide. Avoid common wiring mistakes to optimize performance ...

[What should I do to convert 12v to 13v?](#)

I gave up on keeping my network and router alive at home with an UPS. As soon my power goes out, so does the cable internet. I can power the home with my generator, yet ...



[Can I Attach My Small Inverter Directly to the Battery?](#)

Yes, you can attach a small inverter directly to a battery, but doing it safely requires understanding voltage compatibility, wire sizing, and overload risks. Many DIYers assume it's ...

12 V regulator from 13+ V

It seems odd that a 12V fan would not run at 13V, but perhaps that's the case. '7812'-style regulators tend to have a high dropout voltage (a few volts) which means they ...



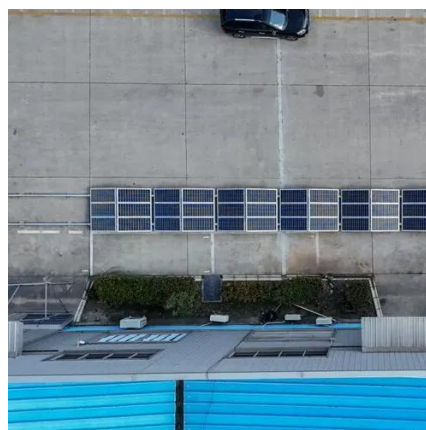
[Connecting Multiple Batteries to an Inverter: Easy ...](#)

There is no set limit to how many batteries you can connect to your inverter. But you must understand how you connect your batteries together affects ...



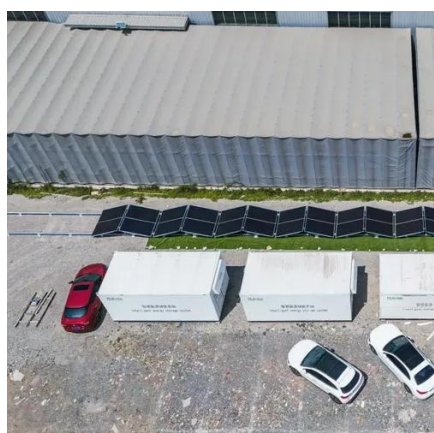
[Frequently Asked Questions About Power Inverters . DonRowe](#)

Short Answer: The size you choose depends on the watts (or amps) of what you want to run (find the power consumption by referring to the specification plate on the appliance or tool). We ...



How to connect inverter to battery: a step-by-step guide for safe ...

We'll explore how to connect inverter to battery, its purpose, and the tools needed for a proper and safe connection. Connecting an inverter to a battery is a crucial step in setting ...



How to Safely Connect a Battery to an Inverter: A Step-by-Step ...



Learn how to safely connect your batteries to your inverter with our guide. Avoid common wiring mistakes to optimize performance and extend system life.



[How to Wire Inverter to Battery - No Sparks, Just ...](#)

Wiring an inverter to a battery isn't rocket science--but get it wrong, and you could fry your gear or drain your power fast. This quick ...



[How to Wire Inverter to Battery - No Sparks, Just Power](#)

Wiring an inverter to a battery isn't rocket science--but get it wrong, and you could fry your gear or drain your power fast. This quick guide shows you how to do it safely and ...



[How bad, if at all, is 14.4V overvoltage for 12V inverter?](#)

In general, 12v inverters will be ok with automotive voltages which can go up past 14.4volts. But you should always check the inverter (or any equipment) for their input voltage ...



Power Inverter: Can I Hook It Directly to the Battery for Safe



Yes, you can hook a power inverter directly to a battery. Ensure the inverter's power rating is compatible with the battery's capacity. This connection supplies reliable power to your ...



[Connecting Multiple Batteries to an Inverter: Easy Guide](#)

There is no set limit to how many batteries you can connect to your inverter. But you must understand how you connect your batteries together affects what you can and can't do! For ...



Contact Us

For catalog requests, pricing, or partnerships, please visit:

<https://www.asimer.es>

Phone: +34 910 56 87 42

Email: info@asimer.es

Scan the QR code to access our WhatsApp.

