



Can a 12v inverter be left on for a long time





Overview

Can a power inverter (solar inverter) run continuously?

Yes. It is possible but not advisable. When the inverter is kept on, it will start draining the battery quickly. Even if no electronic appliance is connected to the inverter, the battery will draw the power and.

Can a power inverter (solar inverter) run continuously?

Yes. It is possible but not advisable. When the inverter is kept on, it will start draining the battery quickly. Even if no electronic appliance is connected to the inverter, the battery will draw the power and.

When it comes to using an inverter, one of the most common questions that arises is whether it's safe to leave it on all the time. While it may seem like a convenient solution to have a constant power supply, there are several factors to consider before making a decision. In this article, we'll.

Yes, you can leave your inverter ON all the time if it's working under the rated capacity. Should I leave my inverter on all the time?

It depends on your use of energy. If you have the appliance connected to the inverter, it might need the power source to function, especially when using the.

An inverter converts DC power from the battery to AC power for use by household appliances. Even when no appliances are running, the inverter still uses a small amount of power for automatic detection or to check the battery's health. When do I turn on the inverter?

The inverter can be left on all.

There is no yes or no answer to this question. Instead, the solution to 'Can I leave my power inverter on all the time?

' depends on your system and planned usage. In this article, we'll go through leaving your inverter on all the time along with the pros and cons of each decision. So let's dive in.



Can the inverter be switched off when not in use?

Yes, you can switch off your inverter when the batteries are fully charged and it is not in use. But it is not advisable if you are not leaving home for 1 or 2 months. Because this will make you start the inverter manually during power cuts and.

The Multiplus 12V 2000A inverter only draws a few W on standby so I've been leaving it on 24/7 for convenience. The inverter provides a single 120V 15A circuit which is mostly idle. Are there any negative aspects to leaving the inverter on all the time or should I be flipping the on/off switch only.



Can a 12v inverter be left on for a long time



[Can I Leave My Inverter On All The Time?](#)

Generally speaking, it is not a good idea to leave your power inverter on all of the time. This is particularly important if you have a limited energy supply ...

[Is it okay to leave Multiplus on all the time?](#)

Are there any negative aspects to leaving the inverter on all the time or should I be flipping the on/off switch only when I need it to? Does leaving the inverter reduce its lifespan or ...

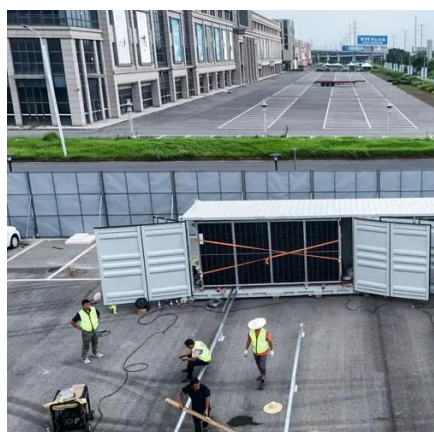


Powering On: The Pros and Cons of Leaving Your Inverter On All the Time

Turning an inverter on and off repeatedly can cause wear and tear on the internal components, leading to a shorter lifespan. Leaving it on continuously can reduce the stress on ...

[Should I Leave My Inverter On All the Time?](#)

As long as the inverter has access to power, anything connected to it will keep running. For many this is the most important benefit of leaving an inverter on. If your home is off the grid, the ...



[Can I leave My Inverter ON All the Time?](#)

Yes, you can leave your inverter ON all the time if it's working under the rated capacity.

Powering On: The Pros and Cons of Leaving Your Inverter On All ...

Turning an inverter on and off repeatedly can cause wear and tear on the internal components, leading to a shorter lifespan. Leaving it on continuously can reduce the stress on ...



[Should I Leave My RV Inverter On All the Time?](#)

Modern inverters are significantly more efficient than older models, but they still necessitate a measurable draw on the battery bank. For a typical 2,000-watt pure sine wave inverter, the idle ...

[Is It Ok to Leave Inverter on All the Time](#)



Yes, it is generally safe to leave an inverter on all the time. Continuous operation ensures readiness during power outages. Inverters ...



Can I Leave My Inverter On All The Time?

Generally speaking, it is not a good idea to leave your power inverter on all of the time. This is particularly important if you have a limited energy supply in your batteries and don't have ...

Can I leave My Inverter ON All the Time?

Yes, you can leave your inverter ON all the time if it's working under the rated capacity.



Can inverter be switch off when not in use?

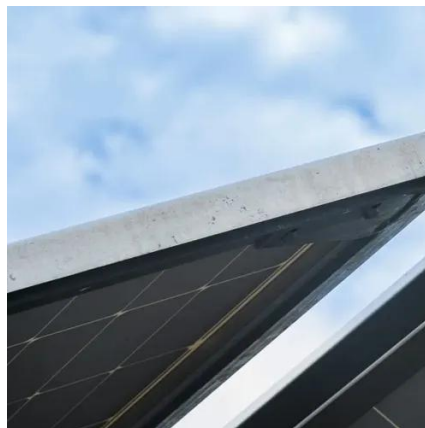
Yes, you can switch off your inverter when the batteries are fully charged and it is not in use. But it is not advisable if you are not leaving home for 1 or 2 months.



Can inverter be switch off when not in use?



Yes, you can switch off your inverter when the batteries are fully charged and it is not in use. But it is not advisable if you are not ...

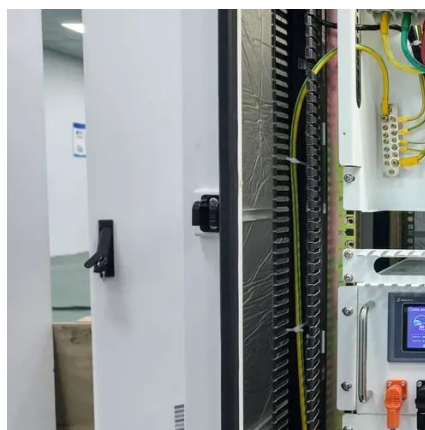


[Is It Ok to Leave Inverter on All the Time](#)

Yes, it is generally safe to leave an inverter on all the time. Continuous operation ensures readiness during power outages. Inverters are crucial for ensuring a seamless power ...

[Do I Need to Turn Off My Inverter When Not in Use?](#)

When do I turn on the inverter? The inverter can be left on all the time in most everyday situations. The inverter is needed to keep the refrigerator running while traveling in ...



[Should I Leave My Inverter On All the Time?](#)

As long as the inverter has access to power, anything connected to it will keep running. For many this is the most important benefit of leaving an ...

[What is the lifespan of a 12v inverter?](#)



On average, a well-made 12v inverter can last anywhere from 5 to 15 years. But this is a pretty wide range, and it really depends on the factors we just talked about.





Contact Us

For catalog requests, pricing, or partnerships, please visit:

<https://www.asimer.es>

Phone: +34 910 56 87 42

Email: info@asimer.es

Scan the QR code to access our WhatsApp.

