



Can a solar panel drive 100 watts





Overview

A 100 watt solar panel rarely produces 100 watts consistently. This rating refers to the Standard Test Conditions (STC)—perfect sunlight, optimal angle, and 77°F temperature. The real-world output is always lower due to temperature, angle, dust, and atmospheric conditions.

A 100 watt solar panel rarely produces 100 watts consistently. This rating refers to the Standard Test Conditions (STC)—perfect sunlight, optimal angle, and 77°F temperature. The real-world output is always lower due to temperature, angle, dust, and atmospheric conditions.

A 100-watt solar panel can operate several different devices or home appliances such as lights, fans, and laptops. It is often seen as the type of solar panel with the right size. But, what can a 100-watt solar panel produce?

We'll cover that topic in the rest of this post! A 100W solar panel that.

How much current can 100w solar energy produce?

1. Regarding solar energy, a system generating 100 watts can produce around 8.33 amps under optimal conditions, 100 watts is sufficient for powering small appliances, and factors such as sunlight availability and panel orientation significantly affect.

Can a 100 watt solar panel handle charging my laptop or phone?

Absolutely! A 100 watt solar panel is perfectly sized for keeping all your small electronic devices—like phones, tablets, and even most standard laptops—fully charged throughout the day. How many watt-hours can I actually expect from my.

The 100-watt solar panel represents a common and accessible starting point for individuals exploring off-grid power solutions for applications like camping, recreational vehicles (RVs), or small outbuildings. This rating indicates the panel's peak power capacity, which is the maximum electrical.

A 100-watt solar panel can power various small devices and appliances, including LED lights, mobile devices, laptops, small fans, and camping equipment. When



combined with a solar charge controller and battery, a 100-watt solar panel can also power larger appliances such as refrigerators, small.

A “100-watt” solar panel is rated under ideal lab conditions: bright noon sunlight, clear skies, panel angled just right, and no shading. But here’s the reality: weather isn’t always cooperative, angles shift, and solar panels rarely work at perfect efficiency. And yet, even at reduced levels, a.



Can a solar panel drive 100 watts



[What Can a 100 Watt Solar Panel Run?](#)

The power limitations of a 100W solar setup are often determined not just by the panel's output, but by the capacity of the battery and the continuous wattage limit of the inverter.

[How much current can 100w solar energy ...](#)

Regarding solar energy, a system generating 100 watts can produce around 8.33 amps under optimal conditions, 100 watts is ...



100 Watt Solar Panel How Many Amps?

Under perfect conditions -- such as bright, direct sunlight and a clean, properly angled panel -- a 100-watt solar panel produces approximately 5.5 amps at 18 volts. ...



[What Will a 100 Watt Solar Panel Run? Here is the Answer!](#)

That means a 100 watts solar panel output can reach 365 kWh per year. If you're going to look into different scenarios, there are plenty of home devices and appliances that ...



[what can a 100 watt solar panel actually power](#)

While more expensive, an MPPT controller is highly recommended for maximizing the output of your 100 watt solar panel, especially in colder weather or if the panel voltage is ...

[What Can I Run With a 100W Solar Panel?](#)

When a solar panel has 100W of rated power, its output under optimal conditions is about 100 watts in an hour. It's crucial to note that the full rated power of 100W is achieved in a ...



[How much current can 100w solar energy produce? , NenPower](#)

Regarding solar energy, a system generating 100 watts can produce around 8.33 amps under optimal conditions, 100 watts is sufficient for powering small appliances, and ...



Power Budget: What A 100-Watt Solar Panel Can Realistically Run



On average, a 100-watt solar panel can produce between 300 to 600 watt-hours (Wh) of energy per day, depending on your location's sunlight hours, weather, and panel ...

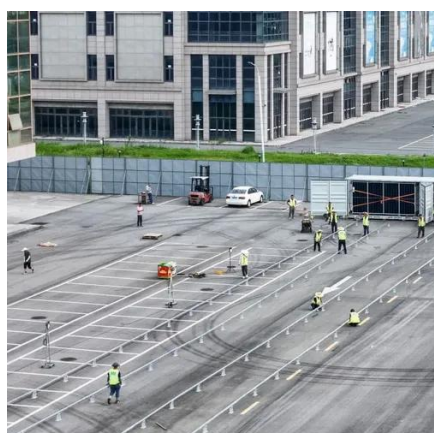


[What Can a 100 Watt Solar Panel Run?](#)

A common question arises: "What can a 100-watt solar panel run?" In this article, we will explore the capabilities of a 100-watt solar panel, the factors that influence its output, and the power ...

[What Can a 100 Watt Solar Panel Run? Full Guide with Brands](#)

Discover what a 100 watt solar panel can power, how to use it for home, camping, or RV setups, and the best solar brands for 2025. Full guide with practical tips and FAQs.



[What Can a 100 Watt Solar Panel Power?](#)

And yet, even at reduced levels, a 100 watt panel can surprise you with its practicality. On average, a good-quality 100W panel can produce about 300-600 watt-hours of ...



Contact Us

For catalog requests, pricing, or partnerships, please visit:

<https://www.asimer.es>

Phone: +34 910 56 87 42

Email: info@asimer.es

Scan the QR code to access our WhatsApp.

