



# Can the battery be directly connected to the inverter





## Overview

---

Yes, you can hook a power inverter directly to a battery. Ensure the inverter's power rating is compatible with the battery's capacity. This connection supplies reliable power to your vehicle. Always prioritize safety and check the current draw to prevent any damage to the starting.

Yes, you can hook a power inverter directly to a battery. Ensure the inverter's power rating is compatible with the battery's capacity. This connection supplies reliable power to your vehicle. Always prioritize safety and check the current draw to prevent any damage to the starting.

Yes, you can hook a power inverter directly to a battery. Ensure the inverter's power rating is compatible with the battery's capacity. This connection supplies reliable power to your vehicle. Always prioritize safety and check the current draw to prevent any damage to the starting battery.

Yes, you can attach a small inverter directly to a battery, but doing it safely requires understanding voltage compatibility, wire sizing, and overload risks. Many DIYers assume it's as simple as clipping on cables—until sparks fly or devices fail. Modern lithium batteries and high-efficiency.

Connecting inverters to batteries is an important part of an off-grid power solution or backup power system, and the right connections ensure that the system runs efficiently. This article will explore in detail how inverters and batteries work together, how to connect them correctly, and how to.

An inverter is a device that converts direct current (DC) from a battery into alternating current (AC) for powering household appliances. Batteries, on the other hand, store the DC power generated by solar panels or the grid. Together, they form a robust power backup system that keeps your lights.

Wiring an inverter to a battery isn't rocket science—but get it wrong, and you could fry your gear or drain your power fast. This quick guide shows you how to do it safely and efficiently. Whether you're setting up for backup power or going off-grid, here's how to get it right. How to wire an.

Yes, you can connect an inverter directly to a battery bank. Once the batteries are



connected correctly, simply route the positive and negative wires from the inverter to the battery terminals. However, it is crucial to ensure proper safety measures, such as fuses and shunts, are in place to.



## Can the battery be directly connected to the inverter



### [How to Connect a Power Inverter to a Battery.](#)

If you want to connect an inverter to a battery, you must first make sure the voltage of the battery is compatible to the inverter, such as 12-volt battery being connected to a

### [Can I connect an inverter directly to a battery?](#)

Yes, you can connect an inverter directly to a battery bank. Once the batteries are connected correctly, simply route the positive and negative wires from the inverter to the ...



### [How to Connect a Large or Small Inverter to a Battery](#)

When does a small inverter's power come from a 12V DC outlet and when does that inverter need to be connected to a battery? ...

### [How to Wire Inverter to Battery - No Sparks, Just ...](#)

Wiring an inverter to a battery isn't rocket science--but get it wrong, and you could fry your gear or drain your power fast. This quick ...



## How to Safely Connect a Battery to an Inverter: A Step-by-Step ...

Learn how to safely connect your batteries to your inverter with our guide. Avoid common wiring mistakes to optimize performance and extend system life.

### [Can I Attach My Small Inverter Directly to the Battery?](#)

Yes, you can attach a small inverter directly to a battery, but doing it safely requires understanding voltage compatibility, wire sizing, and overload risks. Many DIYers assume it's ...



### [How to Connect an Inverter to a Battery: Step-by-Step ...](#)

For increased power capacity, you can connect multiple batteries to your inverter. In a parallel connection, connect all positive ...



## How to connect inverter to battery: a step-by-step guide for safe ...



We'll explore how to connect inverter to battery, its purpose, and the tools needed for a proper and safe connection. Connecting an inverter to a battery is a crucial step in setting ...



### [How to Connect a Large or Small Inverter to a Battery](#)

When does a small inverter's power come from a 12V DC outlet and when does that inverter need to be connected to a battery? The basic decision is based on the maximum ...

### **Power Inverter: Can I Hook It Directly to the Battery for Safe**

Yes, you can hook a power inverter directly to the battery. This setup is common for many applications, such as in vehicles or off-grid systems. Directly connecting an inverter to a ...



### **How to Connect an Inverter to a Battery: Step-by-Step Guide for ...**

For increased power capacity, you can connect multiple batteries to your inverter. In a parallel connection, connect all positive terminals together and all negative terminals ...

### [How to connect inverter to battery: a step-by-step ...](#)



We'll explore how to connect inverter to battery, its purpose, and the tools needed for a proper and safe connection. Connecting an ...



### [How to Wire Inverter to Battery - No Sparks, Just Power](#)

Wiring an inverter to a battery isn't rocket science--but get it wrong, and you could fry your gear or drain your power fast. This quick guide shows you how to do it safely and ...

### [How to Safely Connect a Battery to an Inverter: A ...](#)

Learn how to safely connect your batteries to your inverter with our guide. Avoid common wiring mistakes to optimize performance ...



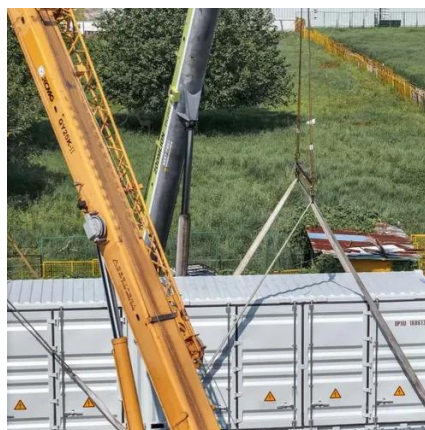
### **Inverter Battery Connection: Essential Tips For Safe And Efficient**

Learn essential tips for safe and efficient inverter battery connection. Discover step-by-step guides, wiring techniques, and troubleshooting tips to optimize your power backup system's ...

### [How to Connect a Power Inverter to a Battery.](#)



If you want to connect an inverter to a battery, you must first make sure the voltage of the battery is compatible to the inverter, such as ...





## Contact Us

---

For catalog requests, pricing, or partnerships, please visit:

<https://www.asimer.es>

Phone: +34 910 56 87 42

Email: [info@asimer.es](mailto:info@asimer.es)

Scan the QR code to access our WhatsApp.

