



Co2 flywheel energy storage





Co2 flywheel energy storage



Why is carbon dioxide nonpolar?

I understand that polarity corresponds to an electronegativity difference and that the larger the electronegativity difference, the more polar the bond. However, I have read that ...

[Baking Soda + Citric Acid + Water = CO2, how much though?](#)

Baking soda (sodium bicarbonate) + citric acid react when mixed with water to form some amount of carbon dioxide gas (CO_2). I am trying to determine what ...



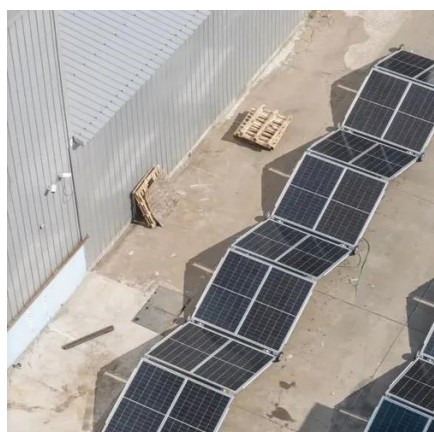
If CO2 is nonpolar how come much more dissolves in water than ...

CO2 has no dipole moment, but that doesn't make it nonpolar. The combined opposed dipole moments give the whole molecule a "quadrupole moment" meaning that if ...



Regulators: CO2, N2, O2, Beer gas

Assuming that the low-pressure side adjusts to the value-ranges I want, is there any reason not to use something sold as an O2 regulator on my CO2 tank, the sold-as CO2 ...



dipole

In CO_2 's symmetric vibrational mode, that symmetry is maintained. But CO_2 has three other vibrational modes: a linear asymmetric vibrational mode, and two ...

Reaction between NaOH and CO2

So I wanted to know what the reaction between sodium hydroxide and carbon dioxide can be, and upon research I got 2 answers. The first one is $\text{CO}_2 + \text{NaOH(aq)} \dots$



How does the relationship between carbonate, pH, and dissolved ...

Fish keepers use a table like the one below to determine dissolved CO_2 by observing the color of a pH indicator in water with a known concentration carbonate solution ...

[Why is carbon dioxide considered a Lewis acid?](#)



CO_2 is considered a Lewis acid. How it is an acid? According to Lewis: "species that accept an electron pair are acids". But CO_2 can't accept electron pairs ...



[Is carbon dioxide slightly or highly soluble in water?](#)

Carbon dioxide content in air is only 0.03%, but it is highly soluble in water unlike oxygen and one volume of CO_2 dissolves in equal volume of water, the solubility being higher ...

Does CO_2 dissolve in water?

The amount of CO_2 dissolved in water is proportional to the outer pressure. At 20°C , 1 liter water dissolves about 1.7 g CO_2 at normal pressure (1 atm). If the pressure is ...





Contact Us

For catalog requests, pricing, or partnerships, please visit:

<https://www.asimer.es>

Phone: +34 910 56 87 42

Email: info@asimer.es

Scan the QR code to access our WhatsApp.

