



# Conditions for the establishment of wind and solar complementary solar container communication stations in Zambia





## Overview

---

This paper describes the design of an off-grid wind-solar complementary power generation system of a 1500m high mountain weather station in Yunhe County, Lishui City.

This paper describes the design of an off-grid wind-solar complementary power generation system of a 1500m high mountain weather station in Yunhe County, Lishui City.

Solar container communication wind power construction transition towards renewables is central to net-zero emissions. However, building a global power system dominated by solar and wind energy presents immense challenges. Here, we demonstrate the potential of a globally interconnected solar-wind.

towards renewables is central to net-zero emissions. However, building a global power system dominated by solar and wind energy presents immense challenges. Here, we demonstrate the potential of a globally interconnected solar-wind system to meet future electricity sources on Earth vastly surpasses.

Is a multi-energy complementary wind-solar-hydropower system optimal?

This study constructed a multi-energy complementary wind-solar-hydropower system model to optimize the capacity configuration of wind, solar, and hydropower, and analyzed the system's performance under different wind-solar ratios.

Hydro-wind-solar complementary energy system development, as an important means of power supply-side reform, will further promote the development of renewable energy and the construction of a clean, low-carbon, safe, and efficient modern energy system. When was the first wind-solar.

Utilizing the clustering outcomes, we computed the complementary coefficient  $R$  between the wind speed of wind power stations and the radiation of photovoltaic stations, resulting in the following complementary coefficient matrix (Fig. 17.). In order to ensure the stable operation of the system, an.

Feb 1, 2024 · The communication base station installs solar panels outdoors, and



adds MPPT solar controllers and other equipment in the computer room. The power generated by solar . How to make wind solar hybrid systems for telecom stations?

Realizing an all-weather power supply for communication.



## Conditions for the establishment of wind and solar complementary so



### The latest requirements for wind and solar complementary ratios ...

This study constructed a multi-energy complementary wind-solar-hydropower system model to optimize the capacity configuration of wind, solar, and hydropower, and analyzed the system's ...

### Operating communication base stations with wind and solar ...

The wind-solar-diesel hybrid power supply system of the communication base station is composed of a wind turbine, a solar cell module, an integrated controller for hybrid energy

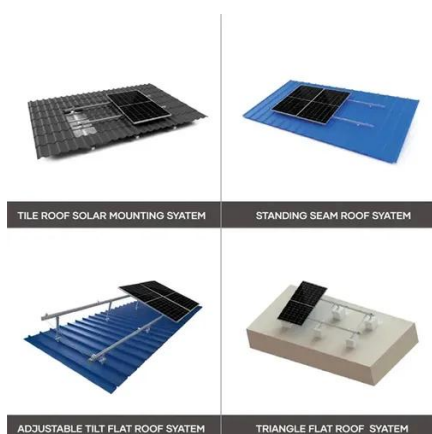


### [Solar container communication station wind and solar ...](#)

Traditionally powered by coal-dominated grid electricity, these stations contribute significantly to operational costs and air pollution. This study offers a comprehensive roadmap for low-carbon

### [Communication base station wind and solar complementary ...](#)

The invention relates to a communication base station stand-by power supply system based on an activation-type cell and a wind-solar complementary power supply system.



### [Solar container communication station Inverter Regulations](#)

I'm interested in learning more about your Solar container communication station Inverter Regulations. Please send me detailed specifications and pricing information.

### [Solar container communication wind power construction 2025](#)

Solar container communication wind power constructi station Can a solar-wind system meet future energy demands? gy transition towards renewables is central to net-zero emissions. ...



### [Solar container communication station wind power node](#)

A globally interconnected solar-wind power system can meet future electricity demand while lowering costs, enhancing resilience, and supporting a stable, sustainable



### **Design of Off-Grid Wind-Solar Complementary Power Generation ...**



This paper describes the design of an off-grid wind-solar complementary power generation system of a 1500m high mountain weather station in Yunhe County, Lishui City.



### [Construction of wind and solar complementary ...](#)

Then, the application of wind solar hybrid systems to generate electricity at communication base stations can effectively improve the comprehensive utilization of wind and solar energy.

### [ASSESSING THE POTENTIAL AND COMPLEMENTARY](#)

Let's explore how solar energy is reshaping the way we power our communication networks and how it can make these stations greener, smarter, and more self-sufficient.





## Contact Us

---

For catalog requests, pricing, or partnerships, please visit:

<https://www.asimer.es>

Phone: +34 910 56 87 42

Email: [info@asimer.es](mailto:info@asimer.es)

Scan the QR code to access our WhatsApp.

