



# Decomposition principle of wind-solar hybrid outdoor power station for solar container communication stations





## Overview

---

Abstract: Wind-solar power generating and hybrid battery-supercapacitor energy storage complex is used for autonomous power supply of consumers in remote areas. This work uses passivity-based control (PBC) for this complex in accordance with the accepted energy management strategy.

Abstract: Wind-solar power generating and hybrid battery-supercapacitor energy storage complex is used for autonomous power supply of consumers in remote areas. This work uses passivity-based control (PBC) for this complex in accordance with the accepted energy management strategy.

Outdoor Communication Energy Cabinet With Wind Turbine Highjoule base station systems support grid- connected, off-grid, and hybrid configurations, including integration with solar panels or wind turbines for sustainable, self-sufficient operation. Hybrid solar PV/hydrogen fuel cell-based cellular.

Abstract: Wind-solar power generating and hybrid battery-supercapacitor energy storage complex is used for autonomous power supply of consumers in remote areas. This work uses passivity-based control (PBC) for this complex in accordance with the accepted energy management strategy (EMS). Structural.

In this paper, we propose a parameterized approach to wind and solar hybrid power plant layout optimization that greatly reduces problem dimensionality while guaranteeing that the generated layouts have a desirable regular structure. Thus far, hybrid power plant optimization research has focused on.

Abstract- This paper deals with the design and construction of solar wind hybrid system. The main objective of this paper is to provide the energy demand by using the renewable energy sources. In this paper, energy system is suggested for a stand-alone application. Wind has been an essential source.

Wind-solar power generating and hybrid battery-supercapacitor energy storage complex is used for autonomous power supply of consumers in remote areas. This work uses passivity-based control (PBC) for this complex in accordance with the accepted energy management strategy (EMS). Structural and.

Abstract Combining solar and wind energy through hybrid power systems develops



into an effective solution to supply sustainable and dependable power. Solar-wind hybrid systems use the joint advantages of these renewable energy resources because the worldwide shift to renewable power production has. Can solar and wind energy be integrated into hybrid power systems?

Integrating solar and wind energy into hybrid power systems is an area of growing interest among researchers and renewable energy practitioners. Hybrid systems leverage the strengths of both solar photovoltaic (PV) and wind energy technologies to provide a more reliable and efficient energy solution.

How can wind and solar hybrid power plant layout optimization reduce problem dimensionality?

In this paper, we propose a parameterized approach to wind and solar hybrid power plant layout optimization that greatly reduces problem dimensionality while guaranteeing that the generated layouts have a desirable regular structure. Thus far, hybrid power plant optimization research has focused on system sizing.

What are the design considerations of a hybrid wind and solar plant?

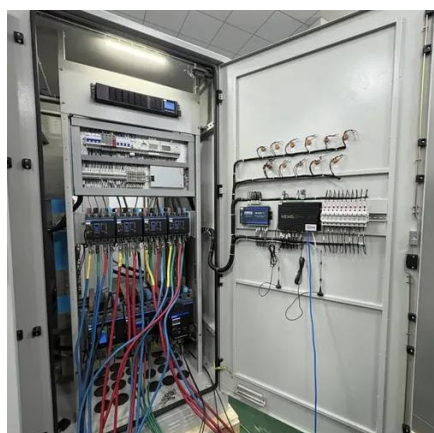
The design considerations of the stand-alone wind and solar plant apply to the hybrid plant in addition to those imposed by their collocation, such as sizing and the effect of wind turbine shading on solar energy performance. The turbines' layout, wind conditions, and operations are key to the wind plant's annual energy production (AEP).

How does a hybrid energy storage system work?

Energy storage solutions such as batteries are integrated to ensure continuous power availability, even during periods of low solar irradiance or wind speeds. The implementation phase includes the installation of the hybrid system in a test environment, where performance metrics such as power output, efficiency, and system stability are evaluated.



## Decomposition principle of wind-solar hybrid outdoor power station for



### **A simplified, efficient approach to hybrid wind and solar plant ...**

In this paper, we propose a parameterized approach to wind and solar hybrid power plant layout optimization that greatly reduces problem dimensionality while guaranteeing that the ...

### [Hybrid Wind and Solar Power Generation System](#)

We use a hybrid system to overcome the drawbacks of the renewable freestanding generation system. The working model of the solar-wind hybrid energy generation system successfully ...



### **Optimizing the physical design and layout of a resilient wind, solar**

First, we introduced a methodology to design and optimize the physical layout of a hybrid wind-solar-storage power plant. This is an important piece to the continued progress of ...



### [Wind-solar hybrid for outdoor communication base stations](#)

The invention relates to a wind and solar hybrid generation system for a communication base station based on dual direct-current bus control, comprising photovoltaic arrays, a wind-power



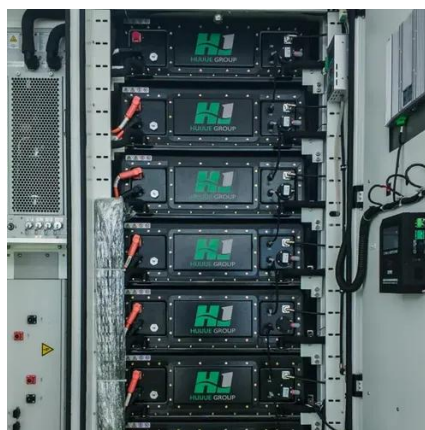
### [Design and Optimization of Solar-Wind Hybrid Power Systems](#)

Faltering into a successful solar-wind hybrid power system implementation requires complete solar and wind power resources evaluation. Site assessment is the vital initial step because it ...



### **Structural Decomposition of the Passivity-Based Control System ...**

Wind-solar power generating and hybrid battery-supercapacitor energy storage complex is used for autonomous power supply of consumers in remote areas. This work uses ...



### [Design and Construction of Solar Wind Hybrid System](#)

In this paper, energy system is suggested for a stand-alone application. Wind has been an essential source of power for even longer. Wind energy (or wind power) refers to the process ...



### [Structural Decomposition of the Passivity-Based Control ...](#)



Abstract: Wind-solar power generating and hybrid battery-supercapacitor energy storage complex is used for autonomous power supply of consumers in remote areas. This work uses



### JETIR Research Journal

In this study, we focus on the design considerations, algorithm development, and practical implementation of such a hybrid system, aiming to assess its performance and potential ...

### Structural Decomposition of the Passivity-Based Control System of Wind

Wind-solar power generating and hybrid battery-supercapacitor energy storage complex is used for autonomous power supply of consumers in remote areas. This work uses ...



### [A comprehensive review of hybrid wind-solar energy systems](#)

Hybrid renewable energy systems (HRES) have emerged as a transformative solution to address these challenges. This paper conducts a comprehensive review of HRES, ...





## Contact Us

---

For catalog requests, pricing, or partnerships, please visit:

<https://www.asimer.es>

Phone: +34 910 56 87 42

Email: [info@asimer.es](mailto:info@asimer.es)

Scan the QR code to access our WhatsApp.

