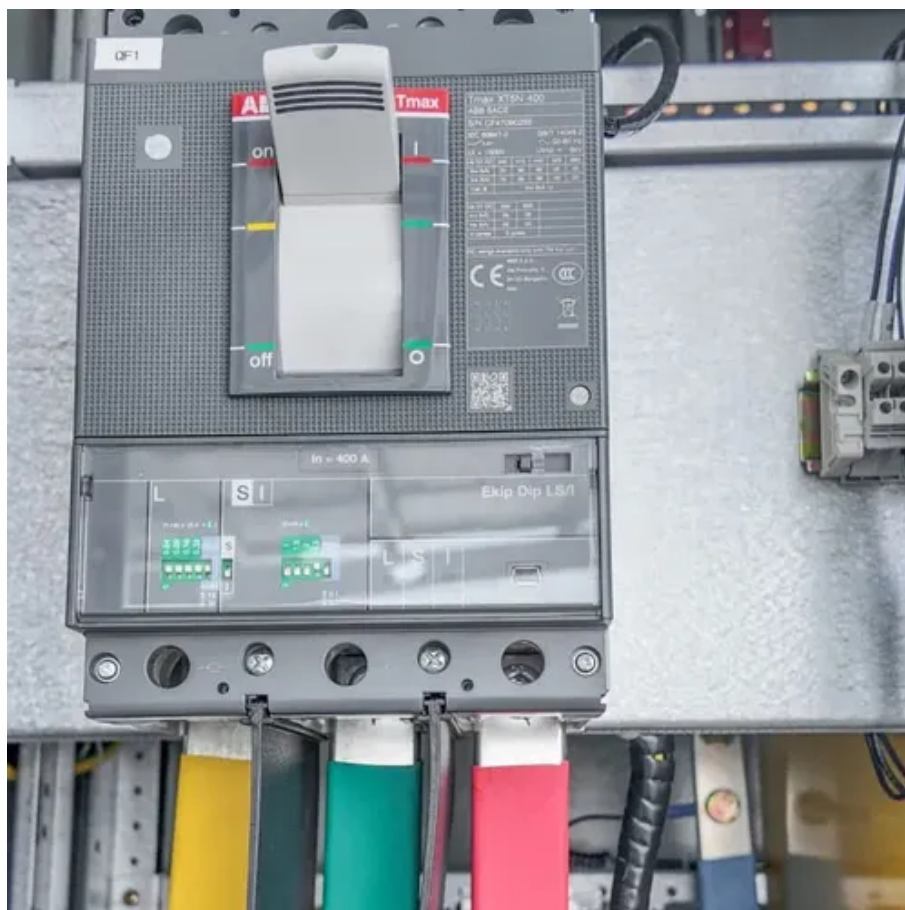




Difference between 220w and 12v inverter





Overview

When choosing the best 12v to 220v inverter for your needs, focus on pure sine wave output, sufficient continuous wattage for your devices, and built-in protections like overload and low-voltage shutdown.

When choosing the best 12v to 220v inverter for your needs, focus on pure sine wave output, sufficient continuous wattage for your devices, and built-in protections like overload and low-voltage shutdown.

When choosing the best 12v to 220v inverter for your needs, focus on pure sine wave output, sufficient continuous wattage for your devices, and built-in protections like overload and low-voltage shutdown. For most users seeking reliable off-grid or mobile power, a 300W-1000W pure sine wave model.

Power inverters convert DC power from a 12V battery source into usable AC power at 220V, making them essential for cars, RVs, and off-grid applications. This article reviews five top 12V to 220V power inverters featuring various power capacities, safety protections, and smart features suitable for.

A power inverter is a device that converts low-voltage DC (direct current) power from a battery to standard household AC (alternating current) power. An Inverter allows you to operate electronics, household appliances, tools and other electrical equipment using the power produced by a car, truck or.

Finding a reliable 12 volt to 220 volt inverter is essential for converting DC power from batteries into steady AC power for various applications. Whether for home backup, RV trips, camping, or solar energy systems, the right inverter ensures safe, efficient power delivery to your electronics.

The stored electricity is mostly supposed to be used for night lighting of the outside, and currently consists of a single 12V 3W LED lamp (and of course the associated night-time detector.) The question is, is there any sense (from energy efficiency perspective) to use an inverter and 220V lamps.

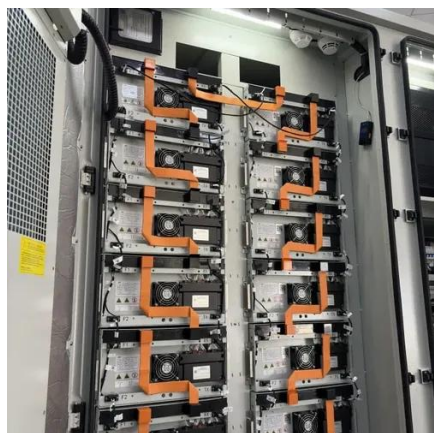
If we want to convert 12V DC to 220V AC, we often use the inverter composed of input interface voltage starting circuit, DC conversion circuit, feedback circuit, Ic oscillation circuit and its output circuit load, etc. to solve the problem of the shoes



and most of all. Inverter is a kind of direct.



Difference between 220w and 12v inverter



Power Inverter Buying Guide , Eaton

Evaluating these factors along with your budget will help you select the most efficient and reliable inverter for converting 12V DC power ...

[How does a 12V to 220V Inverter Work?](#)

If a 12V AC is converted to 220V, the turns ratio of the primary and secondary coils in the transformer in the inverter has to be 1:19. This ...



voltage

I would assume 220V loads would be more energy ...

[12v to 220v Home Power Inverter Introduction](#)

Sufficient power: When the rated load power equal to or less than inverter power, the inverter will not produce overload protection and can go on ...



Understanding the Basics: How a 12V to 220V Inverter Works ...

In today's world, the need for reliable power sources has never been more critical. One device that plays a significant role in this regard is the 12V to 220V inverter. This article ...



voltage

I would assume 220V loads would be more energy expensive to run, as the voltage converter adds another step in energy conversion and every step results in some energy loss. ...



12v Inverter, 12v DC to 110v/220v AC Power Inverter , inverter

The 2000w modified sine wave inverter can convert 12 Volt DC to 110/120 Volt or 220/230/240 Volt AC modified sine wave power, with built-in fuses, cooling fan, multi-protections against ...

[How does a 12V to 220V Inverter Work?](#)



If a 12V AC is converted to 220V, the turns ratio of the primary and secondary coils in the transformer in the inverter has to be 1:19. This process involves the knowledge of ...



[Best 12V to 220V Power Inverters for Cars. ...](#)

This article reviews five top 12V to 220V power inverters featuring various power capacities, safety protections, and smart features ...



Power Inverter Buying Guide , Eaton

What is the difference between an inverter and inverter/charger? An inverter simply converts DC (battery) power into AC power and then passes it along to connected equipment. An ...



[How does a 12V to 220V Inverter Work?](#)

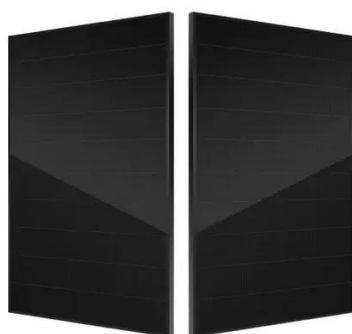
Inverters (sometimes called power inverters) are just a class of electronic devices called power electronics that convert direct current into alternating current. Scientifically ...



Best 12 Volt to 220 Volt Pure Sine Wave Inverters for Home and ...



Evaluating these factors along with your budget will help you select the most efficient and reliable inverter for converting 12V DC power into stable 220V AC electricity for ...



[12v to 220v Home Power Inverter Introduction](#)

Sufficient power: When the rated load power equal to or less than inverter power, the inverter will not produce overload protection and can go on working. Good safety performance: The 12v to ...

Best 12V to 220V Power Inverters for Cars, Homes, and Camping

This article reviews five top 12V to 220V power inverters featuring various power capacities, safety protections, and smart features suitable for different needs.



[How to Choose the Best 12V to 220V Inverter for Your Needs](#)

Discover what to look for in a 12v to 220v inverter, from power output and wave type to safety features and price ranges.





Contact Us

For catalog requests, pricing, or partnerships, please visit:

<https://www.asimer.es>

Phone: +34 910 56 87 42

Email: info@asimer.es

Scan the QR code to access our WhatsApp.

