



Dili Glass solar Module





Overview

What are glass-glass PV modules?

Glass-glass PV modules, also known as double glass solar panels, are photovoltaic modules encapsulated with tempered glass on both the front and back sides. Compared to traditional glass-backsheet modules, they offer greater durability and environmental resistance.

How to install glass-glass solar modules?

Glass-glass solar modules can be installed both with or without frames. The mounting systems FAST, MATCH, LEVEL, NICER, LOCKUP, LOCKIN, LAYUP and LAYIN are especially suitable for the integration of glass-glass solar modules. Particularly anti-glare surface structures are used. Megasol Cell technologies: Mono HiR / Mono HiR RearCon.

What is a glass-glass solar panel?

Glass-glass module structures (Glass Glass or Double Glass) is a technology that uses a glass layer on the back of the modules instead of the traditional polymer backsheet. Originally double-glass solar panels were heavy and expensive, allowing the lighter polymer backing panels to gain most of the market share. Thanks to producers such as:

What is a dual-glass backsheet solar module?

Compared to traditional glass-backsheet modules, they offer greater durability and environmental resistance. The dual-glass structure provides enhanced protection for solar cells against moisture, corrosion, and mechanical stress, while also significantly improving the module's fire resistance.



Dili Glass solar Module



GLASS/GLASS MODULES

Glass/Glass poly/monocrystalline modules with unique Glass/Glass design and thermo-sealing protection at all perimeter of the module ensuring superior robust protection against UV, ...

Glass-Glass PV Modules

Double-glass modules boast increased reliability, especially for utility scale PV projects. These include better resistance to higher temperatures, humidity and UV conditions and have better ...



[Everything You Need to Know About Glass Glass Solar Modules](#)

Glass glass solar modules use glass on both the front and back sides instead of traditional materials like plastic or metal. This dual-glass structure enhances durability and efficiency, ...

Glass-Glass Solar Panel Technology

Double Glass is especially important in photovoltaic facilities such as solar power plants and with the expected long service life of modules such as AKCOME, Jinergy or Jolywood.

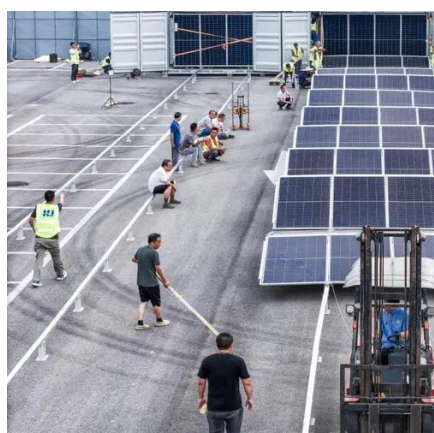


[Everything You Need to Know About Glass Glass ...](#)

Glass glass solar modules use glass on both the front and back sides instead of traditional materials like plastic or metal. This dual-glass structure ...

[Glass-Glass Solar Panel DUETTO , FuturaSun](#)

The glass-glass modules are suitable for buildings with demanding architectural requirements, verandas & carports, photovoltaic fences as well as for areas subject to significant snowfall.



Glass-glass solar modules

Discover durable glass-glass solar modules with a service life of over 50 years, high efficiency and versatile application options.

[Solar Factory OpEx in Dili: A Guide to Operational Costs](#)



This guide breaks down the primary operational costs for a 20-50 MW solar module factory in Dili, moving beyond simple equipment lists to explore the financial realities of ...



[2025 Complete Guide to Glass-Glass Solar Panels: The Top ...](#)

Compared to traditional glass-backsheet modules, they offer greater durability and environmental resistance. The dual-glass structure provides enhanced protection for solar ...



[DILI 5GW HIGH EFFICIENCY PHOTOVOLTAIC MODULE ...](#)

What is a PID-resistant solar module? Built with a durable aluminum frame, tempered dual-glass layers, and designed to withstand wind loads up to 2400 Pa and snow loads up to 5400 Pa, ...



[DILI 5GW HIGH EFFICIENCY PHOTOVOLTAIC MODULE PROJECT](#)

What is a PID-resistant solar module? Built with a durable aluminum frame, tempered dual-glass layers, and designed to withstand wind loads up to 2400 Pa and snow loads up to 5400 Pa, ...



[2025 Complete Guide to Glass-Glass Solar ...](#)



Compared to traditional glass-backsheet modules, they offer greater durability and environmental resistance. The dual-glass structure ...



Glass-Glass Modules: The Revolution for Solar Installers - Why ...

The biggest difference from traditional glass-film modules lies in the construction: glass-glass modules consist of two durable glass layers that surround the solar cells on both ...



Contact Us

For catalog requests, pricing, or partnerships, please visit:

<https://www.asimer.es>

Phone: +34 910 56 87 42

Email: info@asimer.es

Scan the QR code to access our WhatsApp.

