



Disconnect the power supply of the mobile base station





Overview

Firmly but carefully, unplug the power cable from the back of the base station. After disconnecting the power, wait for at least 30 seconds. This will allow the device to fully power down and reset any internal settings.

Firmly but carefully, unplug the power cable from the back of the base station. After disconnecting the power, wait for at least 30 seconds. This will allow the device to fully power down and reset any internal settings.

ABSTRACT- In this research work, the classifications of the device that controls the energy supply sources of the mobile communication base station are presented. The device is used to automatically control the connection and disconnection of the next power source based on the status of the mobile.

Follow these simple steps to safely power cycle your device. Begin by finding your Grandstream DP750 base station. It's a compact device, typically mounted on a wall or placed on a flat surface near your network equipment. Once you've located the device, move to the back of the base station where.

A means to disconnect each portable structure from all ungrounded conductors must be provided. The switch must consist of no more than six enclosed switches or circuit breakers and must be located within sight of and within 6 feet of the operator's station. Fuseholders with switches mounted on box.

2025, International Journal of Innovative Research in Engineering and Management (IJIREM) In this research work, the classifications of the device that controls the energy supply sources of the mobile communication base station are presented. The device is used to automatically control the.

The base station power cabinet is a key equipment ensuring continuous power supply to base station devices, with LLVD (Load Low Voltage Disconnect) and BLVD (Battery Low Voltage Disconnect) being two important protection mechanisms in the power cabinet. This article will provide a detailed analysis.

Optional for redundancy you can connect the Base Station with two cables. The optional cable is not included. To connect the Base Station to the power supply system: Connect one mains cable to the power socket on the rear side of the Base



Station. Connect one mains cable plug into a suitable wall.



Disconnect the power supply of the mobile base station

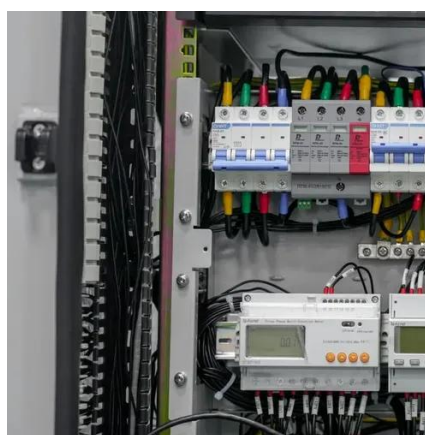


[A Device that Controls the Power Supply Sources of a Mobile](#)

The created device allows for rapid response to outages at base stations, management of supply sources based on their status, and monitoring of them, thereby increasing the reliability of ...

Electrical Code Rules for Portable & Temporary Electrical ...

A means to disconnect each portable structure from all ungrounded conductors must be provided. The switch must consist of no more than six enclosed switches or circuit breakers and must be ...



[LLVD & BLVD in Base Station Power Cabinets](#)

As the battery charge gradually decreases and the output voltage drops to 40V, the comparator outputs a low level, the relay opens, cutting off the power supply to the base station equipment.



[Wouxun PSB-1000 Installation Instructions](#)

Carefully slide the metal frame of the base station up and off the power supply housing. Turn the base station frame upside down and locate the mounting bracket attached to the inside of the ...



[A Device that Controls the Power Supply Sources of a Mobile](#)

This device was tested in real-world conditions at mobile communication base stations in the Khorezm region of the Republic of Uzbekistan, and the results were analyzed.



Connecting/disconnecting the Base Station to/from the power supply ...

Unplug both mains cable plugs from the wall socket. Unplug both mains cable from the power socket on the rear side of the Base Station. The Base Station is completely disconnected from ...



[HARRIS TR-0025-E Land Mobile Base Station User Manual ...](#)

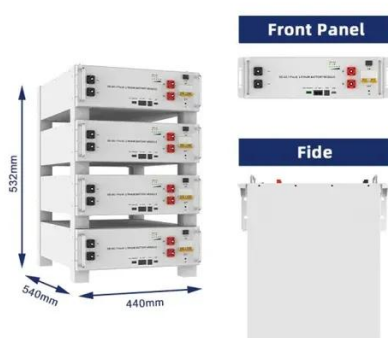
- o When conducting repair/maintenance, disconnect the cabinet power supply plug from the AC source.
- o In European applications, equipment must be installed in a closed cabinet.
- o Only ...



[Do I ground a mobile unit when used as a base station.](#)



Your power supply should have a three-prong plug, and should be plugged into a three-prong socket. The ground prong in that socket will then lead to a rod driven into the ...



Connecting/disconnecting the Base Station to/from the power ...

Unplug both mains cable plugs from the wall socket. Unplug both mains cable from the power socket on the rear side of the Base Station. The Base Station is completely disconnected from ...

LLVD & BLVD in Base Station Power Cabinets

As the battery charge gradually decreases and the output voltage drops to 40V, the comparator outputs a low level, the relay opens, cutting off the ...



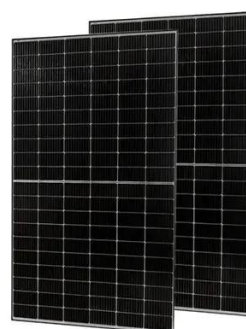
Do I ground a mobile unit when used as a base station.

Your power supply should have a three-prong plug, and should be plugged into a three-prong socket. The ground prong in that socket will then lead to a rod driven into the ground near your ...

Wouxun PSB-1000 Installation Instructions.



Page 1 Wouxun PSB-1000 Installation Instructions
To install a Wouxun mobile radio into the base station, follow the instructions below. **WARNING:** Be sure the radio and base station power ...



How to power cycle a Grandstream DP750 Cordless Base Station

If you're experiencing connectivity issues with your Grandstream DP750 Cordless Base Station, performing a power cycle can often resolve the problem. Follow these simple steps to safely ...



Contact Us

For catalog requests, pricing, or partnerships, please visit:

<https://www.asimer.es>

Phone: +34 910 56 87 42

Email: info@asimer.es

Scan the QR code to access our WhatsApp.

