



Do 5G equipment base stations consume a lot of power





Do 5G equipment base stations consume a lot of power



[Energy Management of Base Station in 5G and B5G: Revisited](#)

Since mmWave base stations (gNodeB) are typically capable of radiating up to 200-400 meters in urban locality. Therefore, high density of these stations is required for actual 5G deployment, ...

[Comparison of Power Consumption Models for 5G Cellular ...](#)

Therefore, it is reasonable to focus on the power consumption of the base stations first, while other aspects such as virtualization of compute in the 5G core or the energy ...



[Energy Efficiency for 5G and Beyond 5G: Potential. ...](#)

Energy efficiency assumes it is of paramount importance for both User Equipment (UE) to achieve battery prologue and base stations ...

[A technical look at 5G energy consumption and performance](#)

To understand this, we need to look closer at the base station power consumption characteristics (Figure 3). The model shows that there is significant energy consumption in the ...



Energy Consumption of 5G, Wireless Systems and the Digital ...

"A 5G base station is generally expected to consume roughly three times as much power as a 4G base station. And more 5G base stations are needed to cover the same area," -IEEE ...

How much power does 5G consume?

One 5G base station is estimated to consume about as much power as 73 households (6), and 3x as much as the previous generation of base stations (5), (7). When base stations, data centers ...



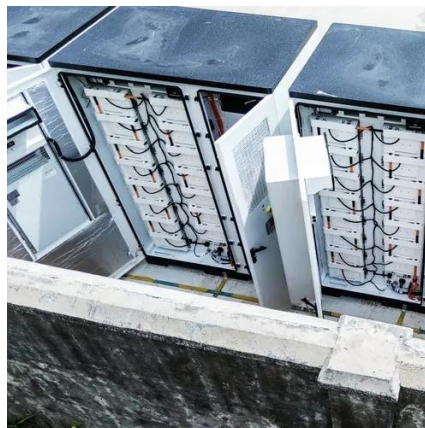
[How Much Power Does 5G Base Station Consume?](#)

Have you ever wondered how much energy our hyper-connected world is consuming? 5G base stations, the backbone of next-gen connectivity, now draw 3-4 times ...

Comparison of Power Consumption Models for 5G Cellular Network Base

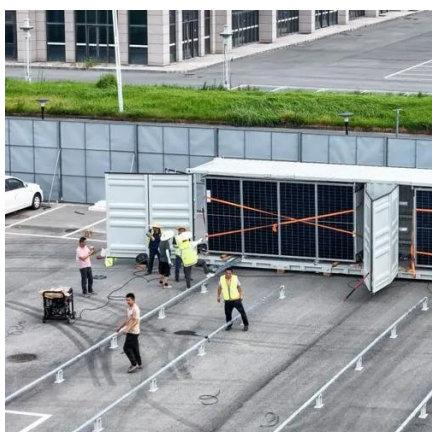


Therefore, it is reasonable to focus on the power consumption of the base stations first, while other aspects such as virtualization of compute in the 5G core or the energy ...



5G base stations use a lot more energy than 4G ...

A typical 5G base station consumes up to twice or more the power of a 4G base station, writes MTN Consulting Chief Analyst Matt ...



5G base stations use a lot more energy than 4G base stations: MTN

A typical 5G base station consumes up to twice or more the power of a 4G base station, writes MTN Consulting Chief Analyst Matt Walker in a new report entitled " Operators ...



Energy Consumption of 5G, Wireless Systems and ...

"A 5G base station is generally expected to consume roughly three times as much power as a 4G base station. And more 5G base stations are ...



What is 5G Energy Consumption?



With 5G projected to increase capacity up to approximately 1000-fold and high frequency millimeter wave (mmWave) transmission driving exponentially higher cell density, this ...



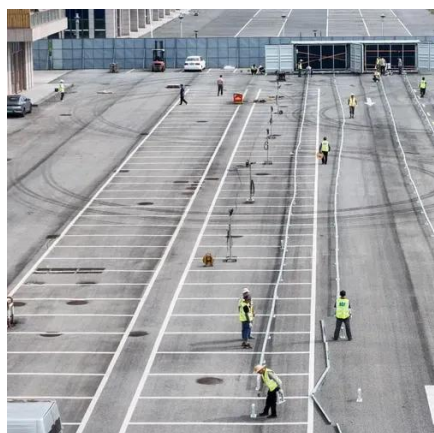
Energy Efficiency for 5G and Beyond 5G: Potential, Limitations, ...

Energy efficiency assumes it is of paramount importance for both User Equipment (UE) to achieve battery prologue and base stations to achieve savings in power and operation ...



Why does 5g base station consume so much power and how to ...

5G base stations use high power consumption and high RF signals, which require more signal processing for digital and electromechanical units, and also put greater pressure ...



How much power does 5G consume?

One 5G base station is estimated to consume about as much power as 73 households (6), and 3x as much as the previous generation of base ...



Contact Us

For catalog requests, pricing, or partnerships, please visit:

<https://www.asimer.es>

Phone: +34 910 56 87 42

Email: info@asimer.es

Scan the QR code to access our WhatsApp.

