



Does the uninterruptible power supply need to be turned off during a power outage





Overview

A UPS acts as a bridge between your equipment and sudden power loss. When the grid fails, it switches to battery mode within milliseconds. But here's the catch: you don't need to turn it off during an outage.

A UPS acts as a bridge between your equipment and sudden power loss. When the grid fails, it switches to battery mode within milliseconds. But here's the catch: you don't need to turn it off during an outage.

An uninterruptible power supply (UPS) is an electrical device that provides emergency power to connected equipment when the main power source (typically utility power) fails. It conditions incoming power to ensure clean and uninterrupted power, protects devices from power problems and enables.

The UPS is designed to power low power electronic equipment that is sensitive to momentary power interruptions such as video selector boxes, DVRs, personal computers and home network routers. 4. Can I plug large loads exceeding the UPS rating into the outlets labeled Surge?

No, if the load plugged.

An uninterruptible power supply (UPS) device is recommended as it keeps your computer powered on during a power outage or brownout. Additionally, a UPS prevents damage from power surges which may occur when power returns after an outage. UPS devices only provide power for a short time to allow you.

Using a UPS keeps your computer powered on during power outages, preventing damage and data loss. The configuration of the BIOS and Windows helps the PC to automatically restart after a power outage and resume its activity. A blackout not only affects the hardware, but also to the operating system.

Uninterruptible Power Supply (UPS) systems are essential in maintaining continuous power to critical systems during outages or power fluctuations. Whether you're using a UPS for your home office, data center, or industrial facility, understanding how these systems work is crucial. This.

Summary: Uninterruptible Power Supplies (UPS) are critical for protecting sensitive



equipment during power outages. This article explores whether to turn off a UPS during outages, best practices for management, and industry-specific insights to optimize reliability and safety. A UPS acts as a. What is an uninterruptible power supply (UPS)?

An uninterruptible power supply (UPS) is an electrical device that provides emergency power to connected equipment when the main power source (typically utility power) fails. It conditions incoming power to ensure clean and uninterrupted power, protects devices from power problems and enables seamless system shutdown during complete outages.

Why do you need a ups for a power outage?

Using a UPS keeps your computer powered on during power outages, preventing damage and data loss. The configuration of the BIOS and Windows helps the PC to automatically restart after a power outage and resume its activity. A blackout not only affects the hardware, but also to the operating system, files and data in progress.

Which outlets should be plugged into a UPS battery & surge?

The outlets labeled Battery + Surge will be powered by the UPS battery during loss of utility power. Low power electronic equipment that is sensitive to momentary power interruptions such as video selector boxes, DVRs, personal computers and home network routers should be plugged into the outlets labeled Battery + Surge.

What happens if a power outage happens?

A sudden power outage interrupts all operating system processes This means that anything you haven't saved will be gone, but the damage doesn't end there. Sudden interruptions can lead to file corruption., affect the Boot of the system or even cause failures in components such as the hard drive or power supply.



Does the uninterruptible power supply need to be turned off during a



[Uninterruptible power supply \(UPS\) FAQs , Eaton](#)

A UPS system performs three primary functions: conditions the incoming dirty power from the utility company to give you clean, uninterruptible power, provides ride-through power to cover ...

Does the Uninterruptible Power Supply Need to Be Turned Off During ...

But here's the catch: you don't need to turn it off during an outage. Its primary purpose is to provide temporary power while allowing safe shutdown of connected devices.



Types of Standby Power Systems

A standby power system's Uninterruptible Power Supplies (UPS) are essential because they guarantee that linked devices will continue to ...

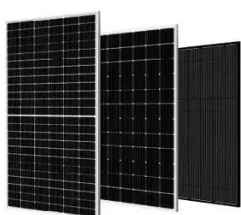
[How to continue working with your PC during a power outage](#)

Learn how to avoid damage and continue working with your computer in the event of a power outage.



Uninterruptible Power Supply (UPS) to Protect Your Computer ...

An uninterruptible power supply (UPS) device is recommended as it keeps your computer powered on during a power outage or brownout. Additionally, a UPS prevents damage from ...



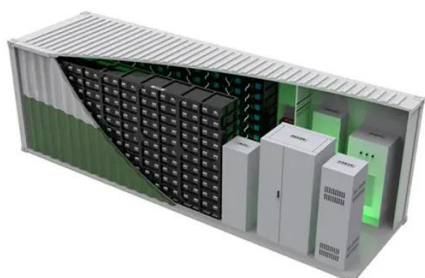
What Homeowners Need to Know About Uninterruptible Power ...

While an uninterruptible power supply (UPS) is great for preserving unsaved work and protecting sensitive devices during brief power outages, it's really a short-term solution.



What Homeowners Need to Know About Uninterruptible Power Supply

While an uninterruptible power supply (UPS) is great for preserving unsaved work and protecting sensitive devices during brief power outages, it's really a short-term solution.



[Uninterruptible Power Supply Questions and ...](#)



Uninterruptible Power Supply (UPS) systems are essential in maintaining continuous power to critical systems during outages or power fluctuations. ...



Uninterruptible power supply FAQ

By providing uninterrupted power, a UPS allows for the safe shutdown of computers and other devices during a power outage. This prevents data loss and corruption by giving users enough ...



Uninterruptible Power Supply Questions and Answers: Essential ...

Uninterruptible Power Supply (UPS) systems are essential in maintaining continuous power to critical systems during outages or power fluctuations. Whether you're using a UPS for your ...



Article

An uninterruptible power supply (UPS) device is recommended as it keeps your computer powered on during a power outage or brownout. Additionally, a UPS prevents damage from ...

[UPS and Surge Protection Device Frequently Asked ...](#)



Low power electronic equipment that is sensitive to momentary power interruptions such as video selector boxes, DVRs, personal computers and home network routers should be plugged into ...



Does the Uninterruptible Power Supply Need to Be Turned Off ...

But here's the catch: you don't need to turn it off during an outage. Its primary purpose is to provide temporary power while allowing safe shutdown of connected devices.

Uninterruptible Power Supply (UPS) to Protect Your Computer from Power

An uninterruptible power supply (UPS) device is recommended as it keeps your computer powered on during a power outage or brownout. Additionally, a UPS prevents damage from ...



Types of Standby Power Systems

A standby power system's Uninterruptible Power Supplies (UPS) are essential because they guarantee that linked devices will continue to receive power even if the main power goes out.



Contact Us

For catalog requests, pricing, or partnerships, please visit:

<https://www.asimer.es>

Phone: +34 910 56 87 42

Email: info@asimer.es

Scan the QR code to access our WhatsApp.

