



Does the w in solar lights stand for watts





Overview

The term “W” found on solar lights predominantly references watts, a unit of measurement that quantifies the rate of energy transfer. More specifically, it indicates how much electrical power the light fixture can draw.

The term “W” found on solar lights predominantly references watts, a unit of measurement that quantifies the rate of energy transfer. More specifically, it indicates how much electrical power the light fixture can draw.

W represents Watts, indicating the power output of solar lights. Watts measure the energy consumption and efficiency of the light source, which is a critical aspect when assessing solar lights for various applications, from garden illumination to security lighting. 2. A higher wattage typically.

These letters represent wattage and color temperature, respectively, which are crucial for determining the light output and ambiance of your outdoor space. By grasping these concepts, you can make informed choices that enhance the efficiency and aesthetic of your solar lighting system. In this.

There are two common words which you will find on most of the solar powered lights. These two words are W and C. What does they mean?

What is their significance?

All such questions, I will answer in this post. In this post, I have braked down what does w and c mean on solar lights?

Key takeaway: W.

What Does W And C Mean On Solar Lights?

Before we get started, we must grasp the fundamental differences between solar and LED lighting. Solar energy is the battery power supply that needs to be charged, whereas LED lighting is the grid’s direct power supply (i.e., the voltage we use to connect.

Does it mean if you have optimal condition, sun, angle, you can theoretically get



400W of power?

Or does it mean you can accumulate 400W in 1 hour of full sun?

Does it mean its 400W in 1 day of sun?

Does it means you have 400W X .20 of power?

What exactly does the 400W solar panel mean?

Ebay seller.

What Does Watts Measure?

Complete Guide to Understanding Power, Energy, and Electrical Measurements (2025) Watts vs. Watt-Hours Confusion Costs Money: Understanding that watts measure power (rate) while watt-hours measure energy (total consumption) is crucial for accurate electricity bill. What does W mean in Watts?

The letter "W" is the symbol for watt or watts. Watts are derived from the formula V (volts) \times A (amps) = W (watts). Think of watts not in terms of strength or capacity but speed or rate. The rate of flow of water through a garden hose or a vehicle's speed are good analogies for watts.

What are Watts & kWh?

Watts are an instantaneous measure of power. Energy is in joules or, more commonly Watt/hours (Wh) or kilowatt/hours (kWh) which is what your electricity supplier uses in order to bill you.

How much power can a 400W solar panel produce?

At best it'll be a 100w panel that can produce 500w in perfect conditions in a lab if you round up in a day. The W in 400w would be how much power it can produce in STC test conditions where it's exactly 25c and getting 1000w of solar per square meter. Thailand, just north of Bangkok. @JohnnyDangerDude what are the dimensions of this panel?

?

.

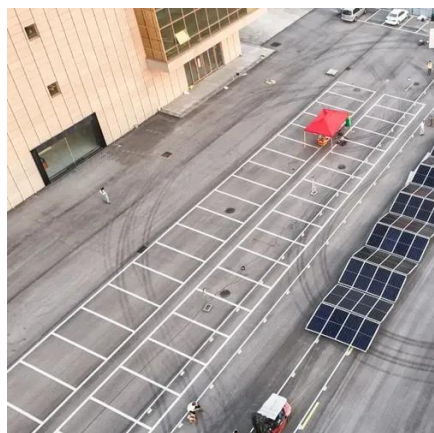
How much energy does a 330W solar panel generate a day?



Energy is in joules or, more commonly Watt-hours (Wh) or kilowatt-hours (kWh) which is what your electricity supplier uses in order to bill you. EDIT For a real-world example, here in sunny Thailand our 330W panels generate, on average, 1.2kWh per day, of course this is very much dependent upon the weather.



Does the w in solar lights stand for watts



[What do W and Y stand for in solar lights?](#)

The letter "W" in the context of solar lights represents "watts," a unit of measure indicating the power consumption of the device. ...

[What Does W And C Mean On Solar Lights?](#)

The W in the battery is expressed in Wh, representing how much work the battery can do because the work $W = UIt = UQ$, and the ...



[What does w and c mean on solar lights?](#)

The letters "W" and "C" on a solar light refer to the light's wattage and capacity, respectively. I have explained what both terms mean in laymen terms for you.



[what does w and c mean on solar lights](#)

It protects these solar cells from thermal destruction in case of total or partial shading of individual solar cells while other cells are exposed to full light. More lumens means it's a brighter light; ...



What Does W And C Mean On Solar Lights? (answered)

The W in the battery is expressed in Wh, representing how much work the battery can do because the work $W = UIt = UQ$, and the unit of the voltage $U \times$ current I is W (watt).



What does W stand for in solar lights? , NenPower

The term "W" found on solar lights predominantly references watts, a unit of measurement that quantifies the rate of energy transfer. More specifically, it indicates how ...



What does the "w" in solar light stand for?

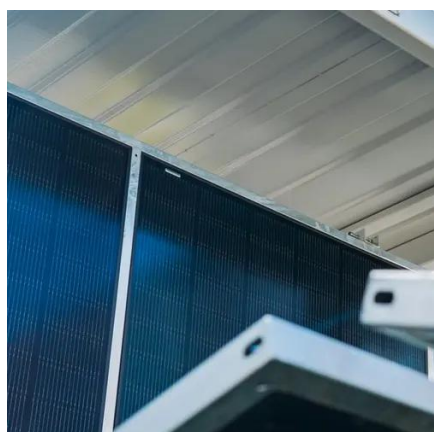
In summary, the "w" in solar light primarily refers to "watts," a unit of power measurement crucial for understanding energy consumption and brightness levels in solar ...



What do W and C mean on solar lights



There's a common misconception when it comes to understanding solar lighting that often revolves around the letter 'W'. This symbol stands for wattage, a unit of ...



What does the "w" in solar lights mean?

The "w" in solar lights refers to watts, a unit of power that quantifies the energy transfer or consumption rate, denoting not only the ...

What does w and c mean on solar lights?

The letters "W" and "C" on a solar light refer to the light's wattage and capacity, respectively. I have explained what both terms ...



What does the "W" number mean for a solar panel? For example ...

It's the theoretical maximum power (Watts) that your panel can generate under standard test conditions (IIRC 25C and 1,000W/m² of sunshine). In real life you don't get near ...

What does the "w" in solar lights mean?



The "w" in solar lights refers to watts, a unit of power that quantifies the energy transfer or consumption rate, denoting not only the brightness but also the ...



What Does Watts Measure? Complete Guide To Power & Energy ...

Learn what watts measure, how they differ from watt-hours, and practical applications. Complete guide with calculations, examples, and expert insights.

[What do W and Y stand for in solar lights? .. NenPower](#)

The letter "W" in the context of solar lights represents "watts," a unit of measure indicating the power consumption of the device. Understanding this metric is essential for ...





Contact Us

For catalog requests, pricing, or partnerships, please visit:

<https://www.asimer.es>

Phone: +34 910 56 87 42

Email: info@asimer.es

Scan the QR code to access our WhatsApp.

