



Double glass heterojunction module





Double glass heterojunction module



java

494 A Double is not an Integer, so the cast won't work. Note the difference between the Double class and the double primitive. Also note that a Double is a Number, so it has the method ...

Correct format specifier for double in printf

Format %lf in printf was not supported in old (pre-C99) versions of C language, which created superficial "inconsistency" between format specifiers for double in printf and scanf.

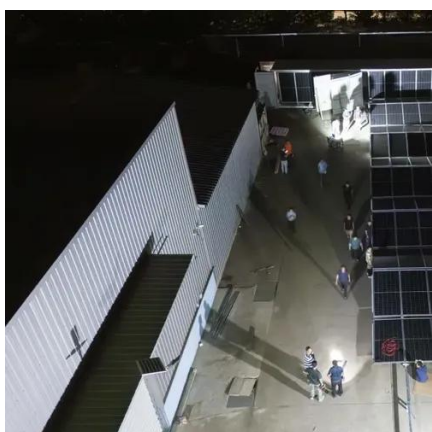


How do I print a double value with full precision using cout?

In my earlier question I was printing a double using cout that got rounded when I wasn't expecting it. How can I make cout print a double using full precision?

What is the difference between float and double?

I've read about the difference between double precision and single precision. However, in most cases, float and double seem to be interchangeable, i.e. using one or the ...



Difference between long double and double in C and C++

Possible Duplicate: long double vs double I am unable to understand the difference between long double and double in C and C++. Can anyone help?

decimal vs double!

When should I use double instead of decimal? has some similar and more in depth answers. Using double instead of decimal for monetary applications is a micro-optimization - ...



C++

From what I have read, a value of data type double has an approximate precision of 15 decimal places. However, when I use a number whose decimal representation repeats, ...

Should I use double or float?



A double has a much higher precision due to it's difference in size. If the numbers you are using will commonly exceed the value of a float, then use a double. Several other ...



c

AFAIK, C supports just a few data types: int, float, double, char, void enum. I need to store a number that could reach into the high 10 digits. Since I'm getting a low 10 digit # from ...



What's the difference between a single precision and double ...

The term double precision is something of a misnomer because the precision is not really double. The word double derives from the fact that a double-precision number uses twice as many bits ...





Contact Us

For catalog requests, pricing, or partnerships, please visit:

<https://www.asimer.es>

Phone: +34 910 56 87 42

Email: info@asimer.es

Scan the QR code to access our WhatsApp.

