



# Factory price 225 amp breaker in Chad





## Overview

---

Our team is ready to assist with any special requirements. Eaton HKD2225 K-frame - HKD - Complete breaker - Fixed thermal - fixed magnetic trip - Two-pole - 225A - 600 Volt - 250 Vdc - 100 kAIC at 240 Volt - 65 kAIC at 480 Volt - Aluminum - Line and load - 50/60 Hz.

Our team is ready to assist with any special requirements. Eaton HKD2225 K-frame - HKD - Complete breaker - Fixed thermal - fixed magnetic trip - Two-pole - 225A - 600 Volt - 250 Vdc - 100 kAIC at 240 Volt - 65 kAIC at 480 Volt - Aluminum - Line and load - 50/60 Hz.

The main breaker protects the main entire panel and can be used as a service disconnect. This is a Type CH 225 Amp 2 pole breaker to be used in Type CH Load centers. Eaton is a trusted name in electrical products for over 175-years. I have a used 200A (BWH2200) main panel that I want to rate down.

Thank you for visiting Elliott Electric Supply online. Your feedback is important to us and is greatly appreciated. Thank you for your suggestions! We appreciate your assistance in improving our software. It helps us serve you even better! Edit Mode: Please login to suggest improvements for this.

Add this product to your job, favorites list or request a quick quote for volume pricing and lead time information. Our team is ready to assist with any special requirements. Eaton HKD2225 K-frame - HKD - Complete breaker - Fixed thermal - fixed magnetic trip - Two-pole - 225A - 600 Volt - 250 Vdc.

North American Switchgear, Inc. is an industry leader in the sale of new, used and out-of-production industrial circuit breakers, switchgear and associated parts. Our Cleveland, OH facility spans over 300,000 square feet and houses over 13,000 low and medium voltage circuit breakers from all major.

By continuing, I agree to the and authorize you to charge my payment method at the prices, frequency and dates listed on this page until my order is fulfilled or I cancel, if permitted. You may return items within 30 days of delivery for a refund. My Circuit Breakers offers one to five day delivery.

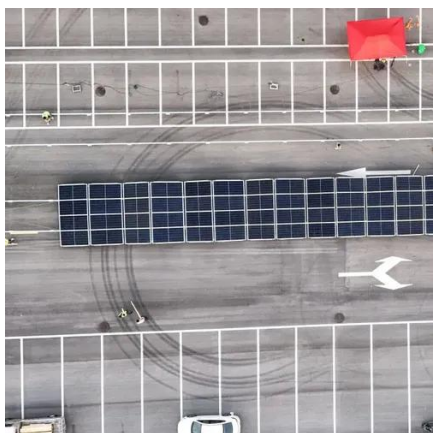
This PowerPacT Q, 225A, 3 pole, circuit breaker has an interrupting rating of 10kA



at 208Y/120VAC and 240VAC. This circuit breaker has a continuous current rating of 80%. PowerPacT Q circuit breakers comply to UL, CSA, and NOM standards and are IEC certified. [to view pricing.](#) Something incorrect?



## Factory price 225 amp breaker in Chad



### [CSR 225 Amp 2-Pole 25 kAIC Main Circuit Breaker](#)

The main breaker protects the main entire panel and can be used as a service disconnect. This is a Type CH 225 Amp 2 pole breaker to be used in Type CH Load centers.

### Molded Case Circuit Breaker, 225 A, 240 V, 3-Pole, Unit Mount, ...

PowerPacT Q-Frame circuit breakers are used for overcurrent protection and switching on 240VAC systems. They are rated for 240VAC operational voltage and provide thermal ...



### 225 amp circuit breaker

Showing 508 results for "225 amp circuit breaker"  
Brand Breaker Amp Voltage Price, \$ Product type



### [CSR 225 Amp 2-Pole 25 kAIC Main Circuit ...](#)

The main breaker protects the main entire panel ...



### **QOM2225VH**

Schneider Electric USA. QOM2225VH - Main breaker, QO, 225A, 2 pole, ...

### Circuit Breakers: Circuit Breaker Type: Molded ...

\$4,995.52 /ea. Web Price Square D 225 Amp, 600 VAC, 3 Pole, Plug In Molded Case Circuit Breaker MSC # 57896482 Qty ...



### Eaton HKD2225 Complete Molded Case Circuit Breaker

Our team is ready to assist with any special requirements. Eaton HKD2225 K-frame - HKD - Complete breaker - Fixed thermal - fixed magnetic trip - Two-pole - 225A - 600 Volt - 250 Vdc - ...



### **QOM2225VH**



My Circuit Breakers provides a comprehensive 1-year warranty on both new and reconditioned products. Rest assured, all products are authentic OEM (original equipment manufacturer). ...



[Square D Q23225NRB Enclosure Circuit Breaker 240V 225A](#)

SQUARE D Q23225NRB : ENCLOSURE CIRCUIT BREAKER 240V 225A Technical Description: Breaker Type; 9.88 Inch Width X 5.5 Inch Depth X 26.25 Inch Height Size; UL Approval; ...



**General Electric TFJ236225 Molded Case Circuit Breaker ~ 225 Amp**

General Electric TFJ236225 Molded Case Circuit Breaker ~ 225 Amp by GE Contact for Quote: 800-909-3660 , sales@naswgr



[CSR2225N Eaton Type CSR Main BRKR Kit ...](#)

Base Mount Breaker, 225 A, Panel Mount, 120/240 V Ac, #2 Awg to 300 Kcmil Wire Size, 3.1 In Overall Length, 2 In Overall Width, 3 LB



**QOM2225VH**



Schneider Electric USA. QOM2225VH - Main breaker, QO, 225A, 2 pole, 120/240VAC, 22kA, bolt on.



### [Square D Q23225NRB Enclosure Circuit Breaker ...](#)

SQUARE D Q23225NRB : ENCLOSURE CIRCUIT BREAKER 240V 225A Technical Description: Breaker Type; 9.88 Inch Width X 5.5 Inch Depth X ...

### [CSR2225N Eaton Type CSR Main BRKR Kit 225A/2 Pole ...](#)

Base Mount Breaker, 225 A, Panel Mount, 120/240 V Ac, #2 Awg to 300 Kcmil Wire Size, 3.1 In Overall Length, 2 In Overall Width, 3 LB



### **Circuit Breakers; Circuit Breaker Type: Molded Case Circuit Breaker**

\$4,995.52 /ea. Web Price Square D 225 Amp, 600 VAC, 3 Pole, Plug In Molded Case Circuit Breaker MSC # 57896482 Qty Quantity cannot be less than 1



## Contact Us

---

For catalog requests, pricing, or partnerships, please visit:

<https://www.asimer.es>

Phone: +34 910 56 87 42

Email: [info@asimer.es](mailto:info@asimer.es)

Scan the QR code to access our WhatsApp.

