



Full-bridge inverter withstands half the voltage





Overview

Half Bridge: Can handle lower voltages and currents compared to a full bridge. Full Bridge: Offers higher power handling capabilities and is suitable for applications requiring larger voltage and current.

Half Bridge: Can handle lower voltages and currents compared to a full bridge. Full Bridge: Offers higher power handling capabilities and is suitable for applications requiring larger voltage and current.

Each provides opposite polarity of $V_s/2$ across the load. When T1 is ON through the period $0 < t < T/2$, the output voltage equal to $V_s/2$. When T2 is ON through the period $T/2 < t < T$, the output voltage equal to $-V_s/2$. At $t=0$, the control signal is removed from T2 and a control signal is applied to T1. At

Full bridge inverter is a topology of H-bridge inverter used for converting DC power into AC power. The components required for conversion are two times more than that used in single phase Half bridge inverters. The circuit of a full bridge inverter consists of 4 diodes and 4 controlled switches as.

A single-phase full bridge inverter is a switching device that generates a square wave AC voltage in the output on the application of DC voltage in the input by adjusting the switch ON and OFF. The voltage in the output of a full bridge inverter is either $-V$ DC, $+V$ DC or 0. According to.

Full bridge inverter: Consists of 4 switch devices (e.g., MOSFETs or IGBTs) arranged in a complete bridge without requiring a center-tap transformer. The switches work in pairs to form two complementary half-bridges. Half bridge inverter: Consists of two power switch devices and a DC source to form.

A full-bridge inverter is a power electronic circuit that converts DC to AC by strategically switching four power semiconductor devices (typically MOSFETs or IGBTs) in a bridge configuration. The topology consists of two half-bridge legs, each containing two switches with anti-parallel diodes for.

Full Bridge Inverter and Half Bridge Inverter are both types of inverters used to convert DC power to AC power. The main difference between the two is the number of switches they use. A Full Bridge Inverter uses four switches, while a Half



Bridge Inverter uses only two switches. This means that a.



Full-bridge inverter withstands half the voltage

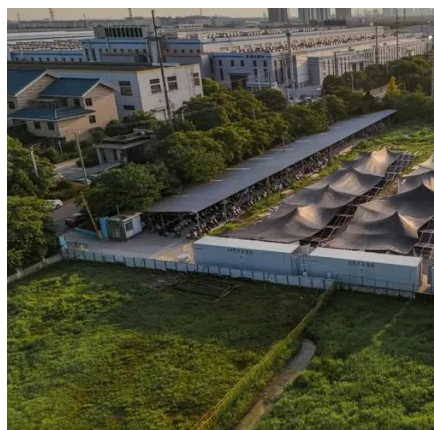


[Full-Bridge Inverter Circuits , Tutorials on ...](#)

1.1 Basic Operation and Topology A full-bridge inverter is a power electronic circuit that converts DC to AC by strategically switching four power ...

[Full Bridge Inverter vs. Half Bridge Inverter](#)

Full Bridge Inverter and Half Bridge Inverter are both types of inverters used to convert DC power to AC power. The main difference between the two is the number of switches they use. A Full ...



What is Full Bridge Inverter? - Circuit, Working & Advantages

The magnitude of output voltage obtained in a half-bridge inverter is half of the input voltage. Whereas in a full-bridge inverter magnitude of the output voltage will be equal to ...

Full bridge inverter

Full bridge inverter: Consists of 4 switch devices (e.g., MOSFETs or IGBTs) arranged in a complete bridge without requiring a center-tap transformer. The switches work in ...



[Full Bridge Inverter - Circuit, Operation, Waveforms & Uses](#)

The general concept of a full bridge inverter is to alternate the polarity of voltage across the load by operating two switches at a time. Positive input voltage will appear across the load by the ...



[What is Full Bridge Inverter? - Circuit, Working](#)

The magnitude of output voltage obtained in a half-bridge inverter is half of the input voltage. Whereas in a full-bridge inverter ...



SUPPORT REAL-TIME ONLINE MONITORING OF SYSTEM STATUS



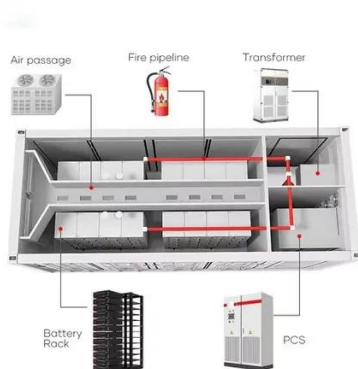
Full Bridge Inverter: Circuit, Waveforms, Working And Applications

In this single-phase full bridge inverter, I will explain the circuit working principle and waveform to complete this session regarding this full bridge inverter.

Comparison of advantages and disadvantages between half bridge ...



Compared with other circuits, half-bridge circuit and full-bridge circuit have a common advantage that they do not need a drain resistance, and the energy stored in the ...

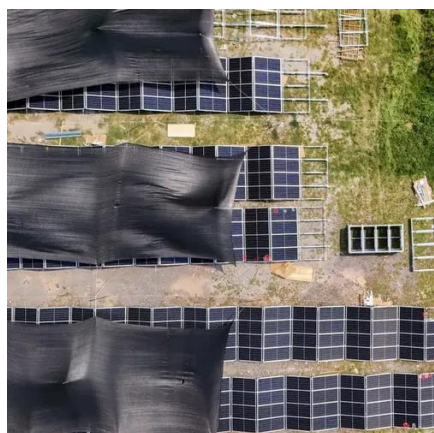


[Comparison of advantages and disadvantages ...](#)

Compared with other circuits, half-bridge circuit and full-bridge circuit have a common advantage that they do not need a drain ...

Full-Bridge Inverter Circuits , Tutorials on Electronics , Next ...

1.1 Basic Operation and Topology A full-bridge inverter is a power electronic circuit that converts DC to AC by strategically switching four power semiconductor devices (typically MOSFETs or ...



[Full Bridge Inverter - Circuit, Operation, Waveforms & Uses](#)

In this single-phase full bridge inverter, I will explain the circuit working principle and waveform to complete this session regarding this full bridge inverter.

[The difference between half bridge and full bridge](#)



Half Bridge: Can handle lower voltages and currents compared to a full bridge. Full Bridge: Offers higher power handling capabilities and is suitable for applications requiring ...



Power Electronics

Consists of 2 choppers, 3-wire DC source. Transistors switched ON and OFF alternately. Each provides opposite polarity of $V_s/2$ across the load. When T1 is ON through the period 0

Full-Bridge Inverter

The load voltage in a full-bridge inverter is a square waveform like the pole voltage, so it contains a lot of harmonics. Its harmonic orders are the same as those of the pole voltage.





Contact Us

For catalog requests, pricing, or partnerships, please visit:

<https://www.asimer.es>

Phone: +34 910 56 87 42

Email: info@asimer.es

Scan the QR code to access our WhatsApp.

