



Function of base station wind power source





Overview

Wind power is the use of energy to generate useful work. Historically, wind power was used by , and , but today it is mostly used to generate . This article deals only with wind power for electricity generation. Today, wind power is generated almost completely using , generally grouped into and connected to the .



Function of base station wind power source



[How Do Wind Power Stations Work? A Detailed Look Inside](#)

Wondering how do wind power stations work? A wind power station captures wind's kinetic energy and turns it into electricity.

Wind Energy , Department of Energy

Wind power or wind energy is a form of renewable energy that harnesses the power of the wind to generate electricity. It involves using wind turbines to convert the turning ...



[How Wind Turbines Work . EARTH 104: Energy, Environment. ...](#)

If the wind turbine collected all of this power, the wind would have to stop and the blades would stop spinning. If you want the blades to keep spinning, it turns out that you can collect about ...

How Does Wind Energy Work? Exploring the Mechanism Behind Wind Power

This article endeavors to uncover the intricate mechanisms behind wind power generation, illustrating its advantages, functionality, and significance in the energy landscape.



[Wind turbine: How it works, parts, and existing types](#)

A wind turbine, also known as a wind generator, is a device that uses the power of the wind to generate electricity. When several wind turbines are grouped together in the same ...

[How Wind Turbines Work , EARTH 104: Energy, ...](#)

If the wind turbine collected all of this power, the wind would have to stop and the blades would stop spinning. If you want the blades to keep spinning, it ...



48V 100Ah

[How Does Wind Energy Work? Exploring the ...](#)

This article endeavors to uncover the intricate mechanisms behind wind power generation, illustrating its advantages, functionality, ...



Wind Energy , Department of Energy



Wind power or wind energy is a form of renewable energy that harnesses the power of the wind to generate electricity. It involves using ...



[Wind power , Description, Renewable Energy, Uses, ...](#)

Wind power is a form of energy conversion in which turbines convert the kinetic energy of wind into mechanical or electrical energy that can be used for power. Wind power is ...

Wind Energy

Energy storage (saving some energy for later when wind turbines are over-producing) and long-distance transmission (moving electricity from places with lots of wind to ...



[How Does Onshore Wind Power Work? , Ørsted](#)

The power from each wind turbine travels through cables to an onshore substation. Here the voltage is adjusted so the electricity can be fed into the grid and distributed via power lines to ...



How a Wind Turbine Works



Wind turbines harness the wind--a clean, free, and widely available renewable energy source--to generate electric power. This page offers a text version of the interactive animation: How a ...



Wind power

Wind power is a sustainable, renewable energy source, and has a much smaller impact on the environment than burning fossil fuels. Wind power is variable, so it needs energy storage or ...

Wind power

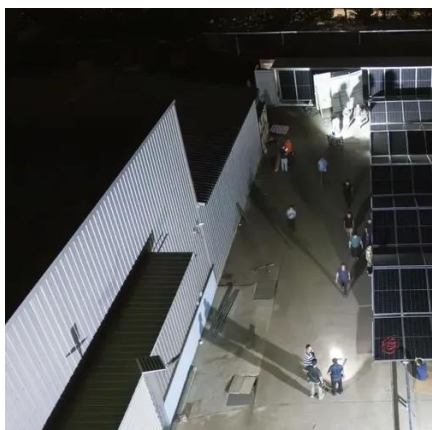
Overview
Wind energy resources
Wind farms
Wind power capacity and production
Economics
Small-scale wind power
Impact on environment and landscape
Politics

Wind power is the use of wind energy to generate useful work. Historically, wind power was used by sails, windmills and windpumps, but today it is mostly used to generate electricity. This article deals only with wind power for electricity generation. Today, wind power is generated almost completely using wind turbines, generally grouped into wind farms and connected to the electrical grid.



[How Does Onshore Wind Power Work? , Ørsted](#)

The power from each wind turbine travels through cables to an onshore substation. Here the voltage is adjusted so the electricity can be fed into ...



[Wind turbine: How it works, parts, and existing types](#)

A wind turbine, also known as a wind generator, is a device that uses the power of the wind to generate ...



[How Do Wind Power Stations Work? A Detailed ...](#)

Wondering how do wind power stations work? A wind power station captures wind's kinetic energy and turns it into electricity.



Contact Us

For catalog requests, pricing, or partnerships, please visit:

<https://www.asimer.es>

Phone: +34 910 56 87 42

Email: info@asimer.es

Scan the QR code to access our WhatsApp.

