



How big a battery is needed for a 1500 watt solar panel





Overview

The required battery capacity for a 1,500-watt solar panel setup varies based on energy consumption and sunlight availability. A typical guideline is to ensure the battery capacity stores at least 125% of daily energy needs.

The required battery capacity for a 1,500-watt solar panel setup varies based on energy consumption and sunlight availability. A typical guideline is to ensure the battery capacity stores at least 125% of daily energy needs.

A Solar Panel and Battery Sizing Calculator is an invaluable tool designed to help you determine the optimal size of solar panels and batteries required to meet your energy needs. By inputting specific details about your energy consumption, this calculator provides tailored insights into the solar.

How many watts of battery are required for a 1500w solar panel?

In determining the number of watts needed from a battery for a 1,500-watt solar panel system, one must consider several critical factors, including the solar panel's output characteristics, battery capacity, energy usage requirements.

This reliable and lightweight solar generator has an in-built inverter in the portable power station and a solar panel that uses high-efficiency PV cells to capture and convert sun energy into electricity. Based on your energy consumption, you can choose the right size and capacity solar generator.

The number of batteries you need depends on a few things: how much electricity you need to keep your appliances powered, the amount of time you'll rely on stored energy, and the usable capacity of each battery. Given the average solar battery is around 10 kilowatt-hours (kWh), most people need one.

Determining the right sizes for solar panels, batteries, and inverters is essential for an efficient and reliable solar energy system. Accurate sizing ensures your system meets energy needs, maximizes efficiency, and minimizes costs. This guide provides a step-by-step approach to calculating the.

To run a 1500-watt heater you need at least 2000 watt pure sine wave inverter. The inverter will convert the DC (Direct current) coming from the batteries into AC



(alternating current). Because the heater requires AC power to run. Watch this video to understand the difference between modified vs. What size solar battery do I Need?

Calculate the perfect battery capacity for your solar system, inverter, or car with accurate battery size calculator For your 5kWh daily usage and 8 hours backup, you need a 180.5Ah 12V Lithium-ion battery. We recommend a 200Ah commercial size. Solar battery storage systems allow you to store excess solar energy for use when the sun isn't shining.

What is a solar panel and Battery sizing calculator?

A Solar Panel and Battery Sizing Calculator is an invaluable tool designed to help you determine the optimal size of solar panels and batteries required to meet your energy needs. By inputting specific details about your energy consumption, this calculator provides tailored insights into the solar setup that will best suit your requirements.

How many watts can a solar panel produce?

The capacity of a solar panel to generate power under standard conditions. Example: A 300-watt panel can produce 300 watts of power per hour under optimal sunlight. The amount of energy a battery can store and supply. Example: A battery with 10 kWh capacity can power a 1 kW device for 10 hours.

How much power does a 1500 watt solar panel use?

To run a 1500 watt for an hour you'd need a 1650Wh of DC power (an extra 10% to cover the DC to AC conversion loss) On average a solar panel produces about 80% of its rated power output in one peak sun hour. This percentage is based on my 200-watt solar panel 's 30 days of output data.



How big a battery is needed for a 1500 watt solar panel



[1500 Watt Heater: What Size Inverter & Solar ...](#)

What Size Battery For 1500 watt Heater? Battery capacity is measured in amp-hours, but the wattage consumption of the heater is ...

[1500 Watt Heater: What Size Inverter & Solar Panel Needed?](#)

What Size Battery For 1500 watt Heater? Battery capacity is measured in amp-hours, but the wattage consumption of the heater is measured in watts. To convert watt-hours ...



How many solar batteries do I need?

Typically, you'll need about two to three batteries to avoid using grid electricity during peak hours and when your solar panels aren't ...

[Solar Panel and Battery Sizing Calculator](#)

Specify the solar panel wattage you plan to use. The result will estimate how many panels you need to meet your energy goals. Enter the ...



Sizing Your Solar System: Panel & Battery Calculators Simplified

To find the right battery size, convert watt-hours to amp-hours (Ah) using the formula: $\text{Battery Ah} = (\text{Total Wh} \div \text{Battery Voltage})$ Now consider depth of discharge (DoD) ...



[How many watts of battery are required for a ...](#)

The required battery capacity for a 1,500-watt solar panel setup varies based on energy consumption and sunlight availability. A ...



How many watts of battery are required for a 1500w solar panel?

The required battery capacity for a 1,500-watt solar panel setup varies based on energy consumption and sunlight availability. A typical guideline is to ensure the battery ...



[Solar Battery Calculator: How to Size Your Solar Panels, ...](#)



Learn how a solar battery calculator determines the battery capacity and the number of solar panels. Also, discover a well-sized system to maximize benefits.

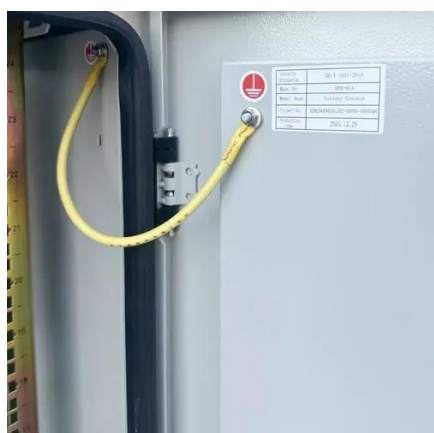
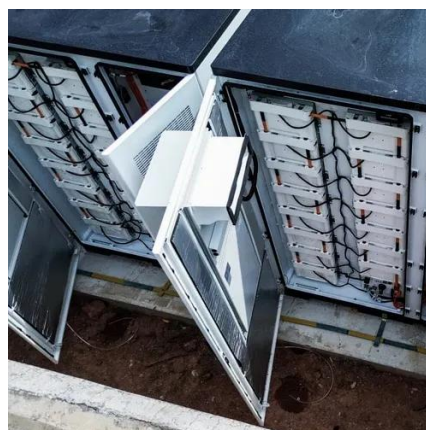


[How to Calculate Solar Panel, Battery, and Inverter ...](#)

Calculate How Much Power You Will Need Before sizing your solar panel system components, it's essential to understand your energy ...

[How to Size Batteries for Solar Panel Installations.](#)

To size a battery for solar, know how much energy you use, what your panels produce, and how much backup you need. Factors like battery depth of discharge, ...



How Big A Battery Do I Need For Solar? Sizing Tips For Off-Grid

Grid-connected systems often need 1-3 lithium-ion batteries. Use a battery bank size calculator and solar panel calculator for precise sizing. Next, factor in your solar panel ...

[Best Battery Size Calculator For Solar And Off-Grid Systems](#)



We recommend a 200Ah commercial size. Solar battery storage systems allow you to store excess solar energy for use when the sun isn't shining. With the right battery solution, you can ...



[How to Calculate Solar Panel, Battery, and Inverter Size](#)

Calculate How Much Power You Will Need Before sizing your solar panel system components, it's essential to understand your energy needs. This will help you determine the ...

[Solar Panel and Battery Sizing Calculator](#)

Specify the solar panel wattage you plan to use. The result will estimate how many panels you need to meet your energy goals. Enter the battery storage capacity, allowing the ...



How many solar batteries do I need?

Typically, you'll need about two to three batteries to avoid using grid electricity during peak hours and when your solar panels aren't producing power. You'll still rely on the ...



[How to Size Batteries for Solar Panel Installations](#)



To size a battery for solar, know how much energy you use, what your panels produce, and how much backup you need. Factors like ...





Contact Us

For catalog requests, pricing, or partnerships, please visit:

<https://www.asimer.es>

Phone: +34 910 56 87 42

Email: info@asimer.es

Scan the QR code to access our WhatsApp.

