



How big a battery should I buy for the inverter





How big a battery should I buy for the inverter



How to Calculate the Right Battery Size for Your Inverter System

To help you find the perfect match, here's a step-by-step guide to calculate battery size based on your power needs and inverter specifications. Step 1: Determine Your Power Requirements

[Solar Battery Size Guide: kWh, Inverter & Runtime](#)

This guide shows how to pick the right solar battery size for a modern home battery system, match power (kW) with an inverter, and estimate runtime--without guesswork.



[How to Right-Size Your Battery Storage System](#)

Proper battery sizing depends on several factors: how much electricity is needed to keep devices powered, how long those devices will rely on stored energy, and the actual capacity of each ...



Calculate Battery Size For Any Size Inverter (Using Our Calculator)

Inverter Battery Size Calculator
How to Calculate Battery Capacity For Inverter
How Many Batteries For 3000-Watt Inverter
Battery Size Chart For Inverter
Battery to Inverter Wire Size Chart
To calculate the battery capacity for your inverter use this formula
 $\text{Inverter capacity (W)} \times \text{Runtime}$



(hrs)/solar system voltage = Battery Size*1.15
Multiply the result by 2 for lead-acid type battery,
for lithium battery type it would stay the same
Example Let's suppose you have a 3000-watt
inverter with an 85% efficiency rate and your daily
runtime See more on dotwatts



Videos of How Big A Battery Should I Buy for The Inverter

Watch video4:05Sizing Inverter For Your Solar Power System - The Basics (Ep. 6) The Solar Lab15.9K viewsMay 21, 2024Watch full videoWatch video7:03How to select Inverter & Battery for your home , calculate size of battery and inverter The Electrical Guy8.5K viewsMay 31, 2024Watch video4:17Inverter and Battery Size Calculation Rashid iqbal7.4K viewsSep 15, 2024Watch video4:541000W Inverter: How Many Batteries You Really Need Cleversolarpower by Nick111.8K viewsJan 7, 2024Watch full videoShort videos

how big a battery should i buy for the inverter

00:28What is a Battery Inverter and How Does it Work? 00:29Best Lithium Battery Inverter for Home and Office 01:01How to Select the Perfect Inverter and Battery for Your Home in 2024 , Best Inverter battery #shorts 00:31The Best Solar Batteries of 2025 Breakdown DIY Dollar Tree Giant Outdoor Candy DecorTikTok03:01Pulstron 24V 200Ah LiFePO4 Battery , Powerful Backup for Home, Office & Solar See allWatch full videobatterymela

How to Calculate the Right Battery Size for Your ...

To help you find the perfect match, here's a step-by-step guide to calculate battery size based on your power needs and inverter specifications. Step ...

[How Many Batteries for a 3000W Inverter? Complete Guide](#)

In this article, we'll break down the exact battery



requirements for a 3000W inverter, compare lithium vs lead-acid options, and guide you step by step with real calculations.



[Calculate Battery Size for Inverter Calculator](#)

By inputting critical parameters such as power consumption, inverter efficiency, and desired usage time, this calculator provides a ...



[Solar Inverter & Battery Sizing Calculator](#)

Choosing the correct inverter and battery size is crucial for every microgrid system. Our Solar Inverter and Battery Sizing Calculator provides a simple and user-friendly solution.

[How to Right-Size Your Battery Storage System](#)

Proper battery sizing depends on several factors: how much electricity is needed to keep devices powered, how long those devices will rely on ...



How to Size and Pair a Battery with Your Inverter in 2025: ...



Learn how to size and pair a battery with your solar inverter in 2025. Discover key ratios, examples, and Growatt solutions for optimal solar + storage system design.



Solar Battery Size Guide: kWh, Inverter & Runtime

This guide shows how to pick the right solar battery size for a modern home battery system, match power (kW) with an inverter, and ...

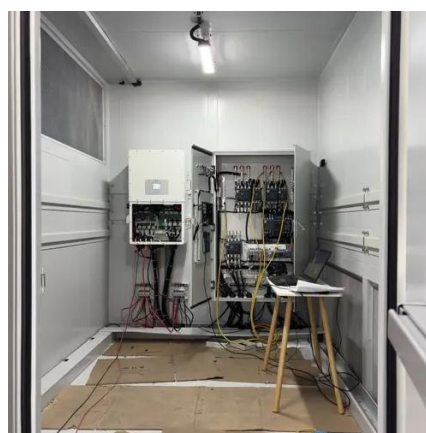


How to Calculate Solar Panel, Battery, and Inverter Size

By accurately calculating your energy needs, desired backup time, and considering factors like system efficiency and future expansion, you can determine the appropriate sizes ...

How to Determine Battery Sizes when using Pure Sine Wave ...

As a general rule you will need to oversize your inverter to load by as much as 75%. Meaning, if you have a 200 watt load, you should start looking at a 300 watt-sized inverter. ...



Calculate Battery Size For Any Size Inverter (Using Our Calculator)



So I have made it easy for you, use the calculator below to calculate the battery size for 200 watt, 300 watt, 500 watt, 1000 watt, 2000 watt, 3000 watt, 5000-watt inverter



[Calculate Battery Size for Inverter Calculator](#)

By inputting critical parameters such as power consumption, inverter efficiency, and desired usage time, this calculator provides a precise battery size recommendation ...





Contact Us

For catalog requests, pricing, or partnerships, please visit:

<https://www.asimer.es>

Phone: +34 910 56 87 42

Email: info@asimer.es

Scan the QR code to access our WhatsApp.

