



# How big a battery should a 3500w inverter use





## Overview

---

- Rule of Thumb: The inverter's rated power (kW) should align with the battery's capacity (kWh). - A 5 kW hybrid inverter typically pairs well with a 5-10 kWh battery. - Oversizing the battery can lead to underutilization, while undersizing may limit performance.

- Rule of Thumb: The inverter's rated power (kW) should align with the battery's capacity (kWh). - A 5 kW hybrid inverter typically pairs well with a 5-10 kWh battery. - Oversizing the battery can lead to underutilization, while undersizing may limit performance.

The Calculate Battery Size for Inverter Calculator helps you determine the optimal battery capacity needed to support your inverter system. By inputting critical parameters such as power consumption, inverter efficiency, and desired usage time, this calculator provides a precise battery size.

This comprehensive guide walks you through every aspect of setting up a 3500W inverter system, from calculating power consumption and battery requirements to selecting the proper wire sizes and circuit breakers. By following these guidelines, you'll ensure your system operates safely and.

Selecting the perfect battery size for your inverter system is important for guaranteeing an effective and reliable power supply. A small battery may leave you in the dark during power outages, while an oversized one can be a waste of money. To help you find the perfect match, here's a step-by-step.

Choosing the right size of battery and inverter is crucial when it comes to powering your devices efficiently. Whether you are planning an off-grid system or looking for a backup power solution, a battery to inverter calculator can help you determine the capacity of batteries and inverters you.

But one of the most common questions in 2025 remains: How do you size and pair a battery with your inverter?

In this advanced guide, we'll expand on our earlier article, [How to Choose the Right Solar Inverter for Your Home](#), by focusing specifically on battery integration. You'll learn how to.



Definition: This calculator estimates the battery capacity required for an inverter system based on the load, backup time, battery voltage, and battery type. The capacity is calculated considering conversion losses and the depth of discharge (DoD) specific to the battery type. Reference: The.



## How big a battery should a 3500w inverter use



LIQUID/AIR COOLING

ON GRID/HYBRID

PROTECTION IP54/IP55

BATTERY /6000 CYCLES

### [Lithium battery bank size for 3500 Watts](#)

Having storage means you can use the power whenever you want to use it, not only when it is there. An empty battery bank of 15kWh could be mostly filled with 17kWh of ...

### [How to Calculate the Right Battery Size for Your ...](#)

By calculation, you can understand which size battery is required for your inverter which fulfils your power needs. By evaluation, you can ensure a ...



### [Calculate Battery Size For Any Size Inverter \(Using ...](#)

To recharge your battery from time to time you would need the right size solar panel to do the job! Read the below article to find out the ...



### **How to Determine Battery Sizes when using Pure Sine Wave ...**

As a general rule you will need to oversize your inverter to load by as much as 75%. Meaning, if you have a 200 watt load, you should start looking at a 300 watt-sized inverter. ...



### [Solar Inverter & Battery Sizing Calculator](#)

Choosing the correct inverter and battery size is crucial for every microgrid system. Our Solar Inverter and Battery Sizing Calculator provides a simple and user-friendly solution.

### **What Will a 3500w Inverter Run**

Assuming a single battery capacity of 100Ah, you would need approximately 18 batteries for the 3500w inverter. This method ensures reliable inverter operation in off-grid ...



### [Inverter Battery Size Calculator . Enviraj](#)

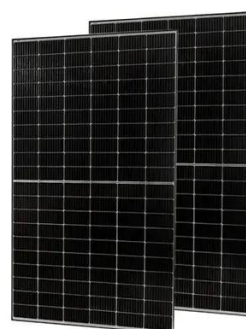
Calculate the ideal battery size for your inverter system. Input load, backup time, voltage, and battery type to find the required capacity.



### **Calculate Battery Size For Any Size Inverter (Using Our Calculator)**



To recharge your battery from time to time you would need the right size solar panel to do the job! Read the below article to find out the suitable solar panel size for your battery bank



### [Calculate Battery Size for Inverter Calculator](#)

Calculate Battery Size for Inverter Calculator helps you determine the optimal battery capacity needed to support your inverter system.

### **How to Size and Pair a Battery with Your Inverter in 2025: ...**

Learn how to size and pair a battery with your solar inverter in 2025. Discover key ratios, examples, and Growatt solutions for optimal solar + storage system design.



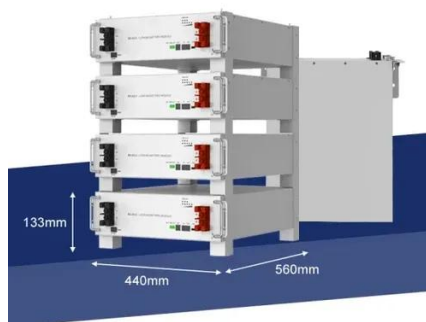
### **How to Calculate the Right Battery Size for Your Inverter System**

By calculation, you can understand which size battery is required for your inverter which fulfills your power needs. By evaluation, you can ensure a reliable and efficient power backup ...

### [Calculate Battery Size for Inverter Calculator](#)



Calculate Battery Size for Inverter Calculator helps you determine the optimal battery capacity needed to support your inverter ...



### Calculate the Ideal Battery Size for Your Inverter with our Battery ...

For a quick and convenient way to calculate the required battery size for your inverter, you can use our Inverter Battery Size Calculator. Simply input the power requirement, ...



### [Solar Inverter & Battery Sizing Calculator](#)

Choosing the correct inverter and battery size is crucial for every microgrid system. Our Solar Inverter and Battery Sizing Calculator ...





## Contact Us

---

For catalog requests, pricing, or partnerships, please visit:

<https://www.asimer.es>

Phone: +34 910 56 87 42

Email: [info@asimer.es](mailto:info@asimer.es)

Scan the QR code to access our WhatsApp.

