



How big a resistor should I use for a 24v inverter 500w





Overview

I should only be using about 16"-20" for the individual pos and neg terminals to the 2424LV. Any information would be appreciated. If you leave your battery connected this will be a one time event and I wouldn't worry too much. There is no harm in trying the resistor you have on hand.

I should only be using about 16"-20" for the individual pos and neg terminals to the 2424LV. Any information would be appreciated. If you leave your battery connected this will be a one time event and I wouldn't worry too much. There is no harm in trying the resistor you have on hand.

What size resistor for inverter fire-up?

I saw Will use a resistor to eliminate the spark when first feeding power into an inverter. I'm going to buy a 24v inverter - around 2000 watts or maybe 1500, depending on the best price I can find at the time. Looking at Amazon resistors, I'm seeing from 1.

By reading a lot of informations, i can see that a pre-charge resistor (or light bulb) would be required/safer to prevent breaking the inverter. I've heard that we would need a 100W light bulb 24V if we go that route ?

Would it be good or it need to be 50W ?

I use one of these. I have a 1200VA 24V.

This 50W 7 Ohm resistor is suitable for pre-charging large inverters in 12V systems. Pre-charging is an important safety process when using inverters larger than 2000W for the first time or after long disuse. Campervan electrics leaving you confused?

Our team of engineers will design your perfect.

ExpertPower's Guide on how to use a resistor to connect inverters to batteries. You may purchase this item here: <https:// ExpertPower's Guide on how to use a resistor to connect inverters to batteries>. You may purchase this item here:.



How do you pre-charge an inverter?

Pre-charging an inverter is simple. You just need to connect a suitable resistor between the DC load and inverter for a few seconds. Then, remove the resistor and connect the DC load to the inverter. The following method breaks this down, step by step. Connect the.

20R at 48V is about 2.5A or therabouts, I'd suggest that will be just fine, give it a suitably rated switch and you're good to go. You're just trying to avoid that massive (almost infinite) current splat when you first connect the discharged inverter. The Seplos 48V BMS has a 51R 10W pre-charge.



How big a resistor should I use for a 24v inverter 500w



[50W 7 Ohm Resistor - Resistor for pre-charging ...](#)

This 50W 7 Ohm resistor is suitable for pre-charging inverters larger than 2000W in 12V systems. We also sell resistors for 24V and 48V systems.

Inverter pre-charge resistor size?

My opinion is you should limit breaker initial contact current to 20-50 amps to minimize any breaker contact pitting. If you assume starting from zero volts on inverter ...



[How to pre-charge an inverter easily](#)

You just need to connect a suitable resistor between the DC load and inverter for a few seconds. Then, remove the resistor and connect the DC load to the inverter.

Do I need to pre charge a 24v 1500w inverter before connecting ...

If you have the ability to turn the inverter off and on, by something other than a circuit breaker (so caps remain connected even when off), then any resistor or light bulb will ...



50W 7 Ohm Resistor - Resistor for pre-charging large inverters

This 50W 7 Ohm resistor is suitable for pre-charging inverters larger than 2000W in 12V systems. We also sell resistors for 24V and 48V systems.

Pre-charging with resistor.

Make sure the switch is beefy enough to handle full surge current to your inverter. Trickle charger to battery posts should be fine. Just make sure the inverter wires have a good ...



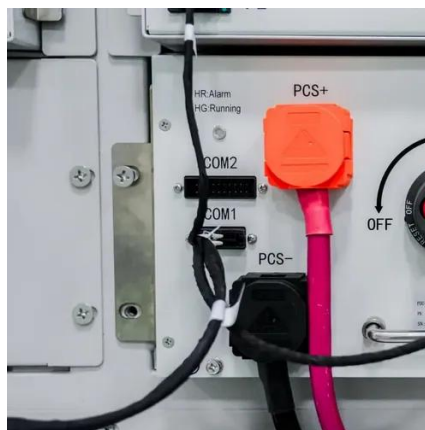
Pre-charging with resistor.

Make sure the switch is beefy enough to handle full surge current to your inverter. Trickle charger to battery posts should be fine. ...

I see Will uses a [Resistor] when connecting an inverter to a ...



Search this forum for "precharge resistor" or "pre-charge resistor". There are several good threads on the subject of its use with an inverter to avoid big sparks.



[How to pre-charge an inverter easily](#)

You just need to connect a suitable resistor between the DC load and inverter for a few seconds. Then, remove the resistor and connect the DC ...



Inverter pre-charge resistor size?

On every system I've ever built, I used a 10w 10ohm resistor, doing it the old fashioned way. Even for dual 48v Victron Quattro 10k's, it wasn't too low of a resistance, and ...



[What size resistor for inverter fire-up?](#)

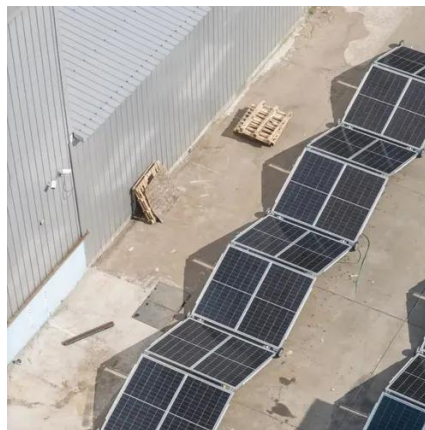
I'm going to buy a 24v inverter - around 2000 watts or maybe 1500, depending on the best price I can find at the time. Looking at Amazon resistors, I'm seeing from 1 to 1 million ...



[Inverter-Charger Resistor Tutorial \(Quick Set-Up\)](#)



ExpertPower's Guide on how to use a resistor to connect inverters to batteries. You may purchase this item here: <https://>



[Multiplus-II 24v/3000 precharge resistor](#)

By reading a lot of informations, i can see that a pre-charge resistor (or light bulb) would be required/safer to prevent breaking the inverter. I've heard that we would need a ...



Contact Us

For catalog requests, pricing, or partnerships, please visit:

<https://www.asimer.es>

Phone: +34 910 56 87 42

Email: info@asimer.es

Scan the QR code to access our WhatsApp.

