



How big a solar panel should I use for 500 watts



48V 100Ah





Overview

A 500-watt solar panel is one of the largest single-panel options available for residential and off-grid use. On average, these panels measure about 2 meters (79 inches) tall and 1 meter (39 inches) wide, with a thickness of 35–40 millimeters.

A 500-watt solar panel is one of the largest single-panel options available for residential and off-grid use. On average, these panels measure about 2 meters (79 inches) tall and 1 meter (39 inches) wide, with a thickness of 35–40 millimeters.

A 500W panel is one of the larger options available on the market today, capable of producing half a kilowatt of power under ideal sunlight. That's enough to run several small appliances or contribute meaningfully to a larger solar system, but the exact output depends on your setup and usage. In.

A 500-watt solar panel typically consists of high-efficiency photovoltaic cells, usually made from monocrystalline or polycrystalline silicon. These panels often exhibit conversion efficiencies ranging from 18% to 22%, meaning they can convert a significant portion of sunlight into usable.

Solar panel size is measured in watts (W) and indicates how much electricity the panel can produce under standard test conditions. Here's the key distinction every homeowner should understand: Most residential solar panels in 2025 come in three main configurations: The most common choice for.

A solar panel's wattage, or power capacity, refers to its energy generation potential, with higher wattage panels able to deliver larger amounts of solar electricity. Solar panel wattage is abbreviated simply with a "W" and 1,000W is equal to one kilowatt (kW). If you want to go into more math and.

500-watt solar panels are bigger than your average solar panel. Typically made up of 144 half-cut monocrystalline cells, their large size makes 500-watt solar panels more commonly seen in commercial, ground-mounted, and utility solar projects. For residential solar projects, is bigger always.

To bridge that gap of very useful knowledge needed, we have compared and averaged the sizes of 100-watt to 500-watt solar panels available on the market. The goal here is to get to the average solar panel size by wattage. You can find



typical dimensions of 100W, 150W, 170W, 200W, 200W, 220W, 300W.



How big a solar panel should I use for 500 watts



[Solar Panel Size Guide , Best Panel Size for Your Roof](#)

Solar panel size shapes everything from the watts to the ease of lifting a module onto a roof. The insights that follow weigh the gains and compromises of large versus compact ...

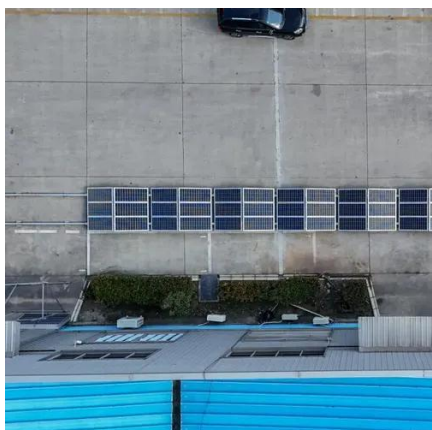
[Solar Panel And Battery Sizing Calculator](#)

Specify the solar panel wattage you plan to use. The result will estimate how many panels you need to meet your energy goals. Enter the ...



[How Big Is A 500 Watt Solar Panel? \[Updated: December 2025\]](#)

So, how big is a 500 watt solar panel? A 500 watt solar panel typically has a footprint of 27.5 square feet. This means that it is about 7.40 feet wide and 3.72 feet tall. The ...



[Solar Panel Size & Dimensions Guide 2025.. Complete Specs](#)

In this comprehensive guide, you'll learn everything you need to know about solar panel sizing, from standard dimensions to weight considerations, helping you determine the ...



[What Can a 500 Watt Solar Panel Power? Size & Amps Guide](#)

Learn what a 500 Watt solar panel can power, its size, amps, and setup options. Compare single vs multiple panels and see if 500W fits your energy needs.

[Standard Solar Panel Sizes And Wattages \(100W-500W ...](#)

To bridge that gap of very useful knowledge needed, we have compared and averaged the sizes of 100-watt to 500-watt solar panels available on the market. The goal here is to get to the ...



LPR Series 19"
Rack Mounted



[Are 500-Watt Solar Panels The Best Option?](#)

If 500-watt solar panels aren't right for you, what size panel should you use? A 350-400 W solar panel is the most popular choice for residential installations.

How Big is a 500-Watt Solar Panel?



Find out how big is a 500 watt solar panel. Learn about its dimensions and space requirements for installations.



[Solar Panel Size and Wattage Guide: What Works Best for ...](#)

High-quality residential solar installations in the US typically utilize solar panels rated between 250W and 430W. As solar panels get more efficient and produce more ...



[Solar Panel Size and Wattage Guide: What Works ...](#)

High-quality residential solar installations in the US typically utilize solar panels rated between 250W and 430W. As solar panels get ...



[How to Size a Solar System \[Step-by-Step Guide\]](#)

Once you have your final array size, simply divide by the wattage of your desired solar panels to figure out how many panels you need. Using our example of a 7.2 kW (7,200-watt) array for ...



[Solar Panel And Battery Sizing Calculator](#)



Specify the solar panel wattage you plan to use.
The result will estimate how many panels you
need to meet your energy goals. Enter the battery
storage capacity, allowing the ...





Contact Us

For catalog requests, pricing, or partnerships, please visit:

<https://www.asimer.es>

Phone: +34 910 56 87 42

Email: info@asimer.es

Scan the QR code to access our WhatsApp.

