



# How big a solar panel should I use with a 50w 12v water pump





## Overview

---

Reality is usually simpler—most 12V battery systems work fine with a 100W to 300W panel depending on your daily power draw. These assume 5 hours of good sun per day and charging from 50% to 100%. If you're in a cloudy area or winter, bump up panel size by 30-50%.

Reality is usually simpler—most 12V battery systems work fine with a 100W to 300W panel depending on your daily power draw. These assume 5 hours of good sun per day and charging from 50% to 100%. If you're in a cloudy area or winter, bump up panel size by 30-50%.

A solar water pump sizing calculator is an online tool that estimates: Pump power (Watts) → how much energy your pump needs. Solar panel power (Watts) → how many panels you need to run the pump. Battery capacity (Amp-hours) → storage needed to keep water flowing during cloudy days. Daily energy use.

Understand Battery Types: Familiarize yourself with different 12V battery types (lead-acid, lithium-ion, nickel-cadmium) to select the right panel size for your needs. Assess Energy Needs: Calculate your daily energy consumption in watt-hours to determine the appropriate solar panel size for.

Determining the appropriate size of a solar panel for a solar surface water pump is a crucial step in ensuring efficient and reliable water pumping. As a trusted solar surface water pump supplier, we understand the significance of getting this right. In this blog, we'll delve into the factors that.

A Solar Panel and Battery Sizing Calculator is an invaluable tool designed to help you determine the optimal size of solar panels and batteries required to meet your energy needs. By inputting specific details about your energy consumption, this calculator provides tailored insights into the solar.

Quick answer: For a 100Ah 12V battery, you need a 100-300W solar panel depending on how fast you want to charge it and how much sun you get. Most people go with 200W—it charges in 5-8 hours of good sun and isn't overkill. But let's break down exactly what you need based on your specific battery and.

If you're planning to run a 50W water pump using solar energy, sizing the right PV



panel is like finding the perfect fuel tank for your car – too small, and you’ll stall; too big, and you waste resources. Let’s break down the calculations every installer and DIY enthusiast should know. Key Fac HOME.



## How big a solar panel should I use with a 50w 12v water pump

---

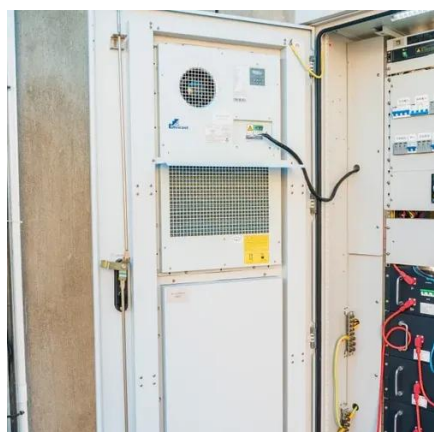
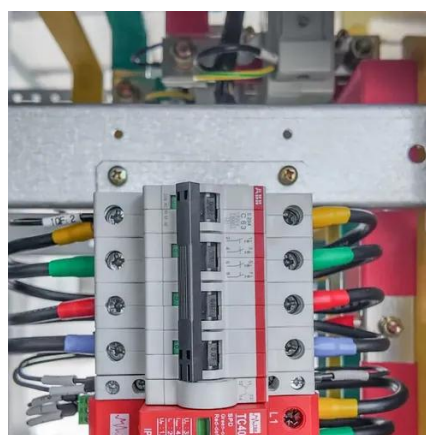


### [Solar Water Pump Sizing Calculator - 9to5 Equipment](#)

Click Calculate, and the tool gives you results like: This means a 500W solar panel system with a 12V 150Ah battery setup would be a good fit. Simple - No technical background needed. ...

### [Solar Panel Size Calculator for 12V Battery Charging](#)

$50\text{Ah} \times 12\text{V} = 600\text{Wh}$ . This represents the total watt-hours your battery can store and what you need to ...



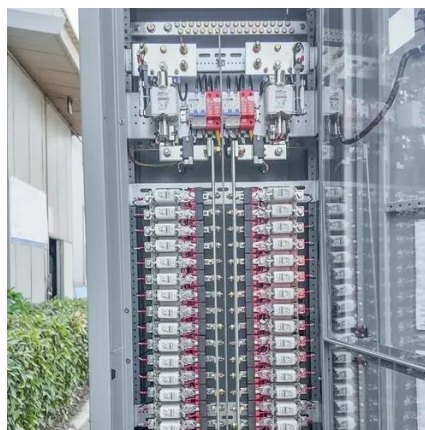
### **What Size Solar Panel to Charge 12V Battery? (Quick Calculator ...**

Calculate exact solar panel size for your 12V battery (50Ah-300Ah). Includes sizing chart, charge time calculator, and PWM vs MPPT comparison. Get it right the first time.

### [What Size Solar Panel Do I Need to Charge a 12v](#)

...

In this guide, we'll cover the essentials: picking the right solar panel size, how many panels you'll need, and the basics of setting up your system. Let's ...

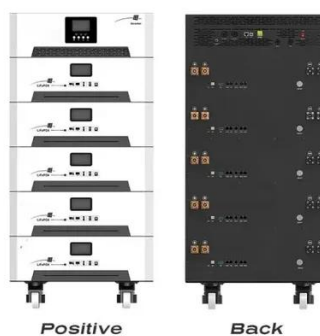


### [How Many Solar Panels Do You Need to Run a ...](#)

To run a water pump on solar, multiply the pump's power by 1.5 to calculate the total solar panel wattage needed. For example, a ...

### [Solar Water Pump Sizing Calculator - 9to5 ...](#)

Click Calculate, and the tool gives you results like: This means a 500W solar panel system with a 12V 150Ah battery setup would be a good fit. Simple ...



### [What Size Solar Panel Do You Need for 12V ...](#)

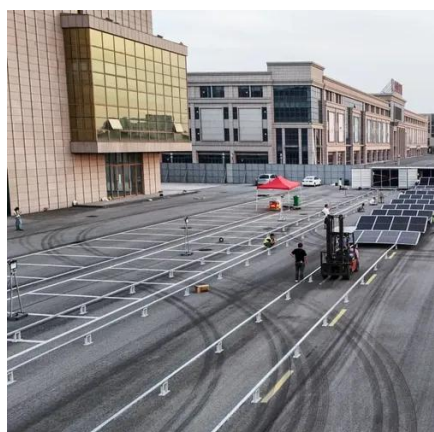
Learn how to size solar panels for 12V batteries with our expert guide. From RVs to off-grid cabins, get accurate sizing calculations and ...



### [What size solar panel is needed for a solar surface ...](#)



Determining the appropriate size of a solar panel for a solar surface water pump is a crucial step in ensuring efficient and reliable water pumping. As ...

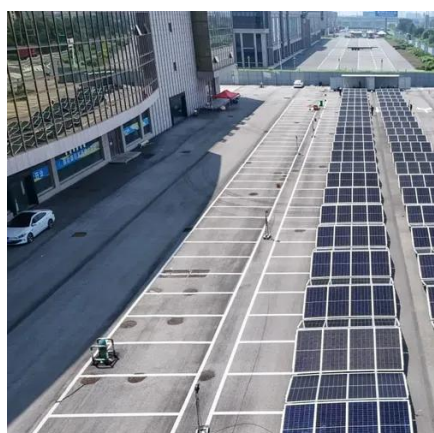


### What Size Solar Panel Do I Need to Charge a 12v Battery for Off ...

In this guide, we'll cover the essentials: picking the right solar panel size, how many panels you'll need, and the basics of setting up your system. Let's explore the details!

### What Size Solar Panel for 12V Battery: A Complete Guide to ...

The article recommends using solar panels ranging from 150 to 300 watts for medium and large-scale applications, such as RVs or solar-powered water pumps. ...



### [Solar Panel Size Calculator for 12V Battery Charging](#)

$50Ah \times 12V = 600Wh$ . This represents the total watt-hours your battery can store and what you need to replenish with solar energy. 2. Estimate Daily Solar Panel Output: Solar ...

### What size solar panel is needed for a solar surface water pump?



Determining the appropriate size of a solar panel for a solar surface water pump is a crucial step in ensuring efficient and reliable water pumping. As a trusted solar surface water pump ...



### [Solar Panel And Battery Sizing Calculator](#)

Specify the solar panel wattage you plan to use. The result will estimate how many panels you need to meet your energy goals. Enter the battery storage capacity, allowing the ...

### [Solar Panel And Battery Sizing Calculator](#)

Specify the solar panel wattage you plan to use. The result will estimate how many panels you need to meet your energy goals. Enter the ...



### [What Size Solar Panel Do You Need for 12V Battery Charging?](#)

Learn how to size solar panels for 12V batteries with our expert guide. From RVs to off-grid cabins, get accurate sizing calculations and discover why custom panels outperform ...

### [How Many Solar Panels Do You Need to Run a Water Pump?](#)



To run a water pump on solar, multiply the pump's power by 1.5 to calculate the total solar panel wattage needed. For example, a 1000W pump requires at least 1500W of ...



### [What Size Solar Panel Do You Need for a 50W Water Pump?](#)

To power a 50W water pump reliably, an 85-120W solar panel generally suffices, depending on sunlight availability and system configuration. Pairing quality components with smart design ...



## Contact Us

---

For catalog requests, pricing, or partnerships, please visit:

<https://www.asimer.es>

Phone: +34 910 56 87 42

Email: [info@asimer.es](mailto:info@asimer.es)

Scan the QR code to access our WhatsApp.

