



How big a water pump should I use for my home solar energy





Overview

Generally speaking, it is necessary to select a water pump with a larger power and a moderate size to ensure sufficient water supply and stable water supply pressure. Choose a suitable water pump according to the output voltage and power of the solar power generation system.

Generally speaking, it is necessary to select a water pump with a larger power and a moderate size to ensure sufficient water supply and stable water supply pressure. Choose a suitable water pump according to the output voltage and power of the solar power generation system.

The required size of solar water pumps depends on the specific usage scenario, system requirements, and installation conditions. Here are some considerations and corresponding suggestions. For home gardening irrigation or small fountains, a smaller solar water pump with moderate power is usually.

From small garden fountains to powerful well pumps, solar energy is revolutionizing how we move water. This is the Vecharged definitive guide to the technology, the sizing, the installation, and the costs. Water is the essence of life, but moving it often requires a connection to a power grid that.

le pump or surface pump is best. This is based o the nature of the water source. Submersible pumps are sometimes suitable for either deep or surface water sources. Surface pumps can draw water from 20-25 ft (7-8 m) below ground level, geographic location and season. For example, the arid.

A solar water pump sizing calculator is an online tool that estimates: Pump power (Watts) → how much energy your pump needs. Solar panel power (Watts) → how many panels you need to run the pump. Battery capacity (Amp-hours) → storage needed to keep water flowing during cloudy days. Daily energy use.

To properly size a solar pump, you must consider various factors, including the pump's power, the depth of water, and the flow rate required. Understanding the formula for sizing the system is the first step toward achieving an efficient and sustainable setup. You might be asking, how do I even.

When sizing Grundfos solar water solutions, it's important that the pump is sized



according to the application and the specific requirements that it's intended for. In this module, we're going to take a closer look at the sizing process of an SQFlex. Based on a hypothetical example consisting of a.



How big a water pump should I use for my home solar energy

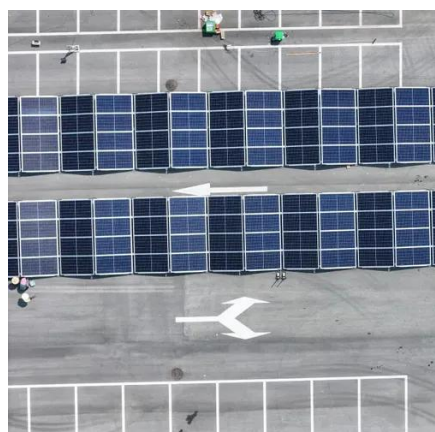


[Solar Water Pump Sizing Calculator - 9to5 Equipment](#)

Proper sizing gives you the "just right" fit. The solar pump calculator uses a set of inputs to make calculations: Daily water requirement - Enter how much water you need (liters or gallons). ...

Solar Water Pump Sizing Calculator

Getting this right helps make sure the pump can push water at the right pressure and flow rate. By figuring out both the suction and discharge heads, you can find the total ...



[How to Calculate the Pump Size for a Solar Pumping System?](#)

When planning a solar pumping system 1, it's crucial to know the right size pump to use. Using the wrong size pump can lead to inefficiency, higher costs, and wasted energy. Let's explore ...

Solar Water Pumps: The Ultimate Guide (Sizing, Cost & Installation)

The definitive guide to solar water pumps. We cover how they work, how to size the right panels and pump for your project, costs, and installation. Use our interactive calculator to ...



How to size and select a solar water pumping system , Grundfos

When sizing Grundfos solar water solutions, it's important that the pump is sized according to the application and the specific requirements that it's intended for. In this module, we're going to ...

Maximize Your Water Efficiency: The Ultimate Guide to Solar Water Pumps

Solar water pumps harness the power of the sun to operate, providing an eco-friendly and cost-effective solution for water pumping needs. These pumps consist of several ...



[What Size Solar Water Pump do I Need?](#)

Generally speaking, it is necessary to select a water pump with a larger power and a moderate size to ensure sufficient water supply and stable water supply pressure. Choose a ...

Guide to Solar Water Pump Sizing



Please note that the listed depths are the depth limits for each configuration, and if the pumping results are at the low end of your requirements, look to increase your solar panel configuration ...

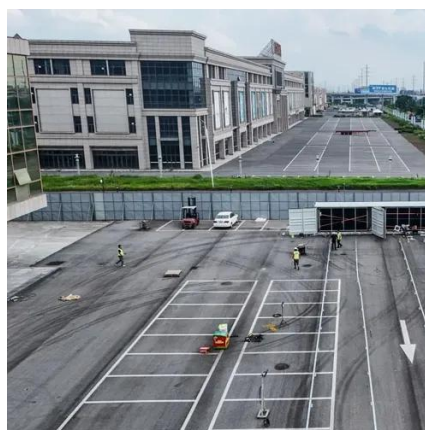


Solar Well Pump Sizing Charts

Controlling your own ability to pump water out of the ground, whether in the field or at home, allows you to be more resilient. Freeing your water source from the grid is a major step ...

[How Big of a Solar Panel Do I Need to Run a Well Pump](#)

Typically, a well pump consumes between 1,000 to 2,000 watts. For efficient operation, a solar panel system producing at least 4,000 watts (or 4 kW) is recommended, ...





Contact Us

For catalog requests, pricing, or partnerships, please visit:

<https://www.asimer.es>

Phone: +34 910 56 87 42

Email: info@asimer.es

Scan the QR code to access our WhatsApp.

