



How big an inverter should I use for 12V100





Overview

What size inverter for a 100Ah battery?

In general, for a 100ah battery, a 1000 watt pure sine wave inverter will be a good suit. It provides enough power to operate a wide range of household or camping appliances. Now, let's figure out how to choose the right inverter size for a 100ah battery, based on what you need. How to Choose the Right Size Inverter for a 100Ah Battery?

How many watts can a 12V inverter run?

Power Rating of the Inverter (Wattage) Inverters are rated by their continuous power output in watts (W). The right inverter size depends on how much power your appliances draw. Here are some general guidelines: A 12V 100Ah battery can reasonably power an inverter up to 1000W-1200W for short periods.

Can I use a 2000 watt inverter with a 100 watt battery?

Yes, you can use a 2000 watt inverter with a 100ah battery. But if you use 2000 watts from your 12v 100ah battery, it will use up the battery faster and over time, it will also shorten the battery's life. Can I use a 1500W inverter with a 100Ah battery?

Yes, you can use a 1500 watt inverter with a 100ah battery.

Do I need a 24V inverter for a 100Ah battery?

If you have a 12V battery, you will need a 12V inverter, while a 24V battery requires a 24V inverter. Make sure to verify the voltage of your battery before selecting an inverter. When picking an inverter for your 100ah battery, it's best to choose a pure sine wave inverter.



How big an inverter should I use for 12V100



[What Size Inverter Do I Need? A Comprehensive Guide to ...](#)

Proper inverter sizing affects energy efficiency, system longevity, and whether your inverter works well with your battery setup. This inverter sizing guide will take you through the ...

[What Size Inverter Do I Need for a 100Ah Battery?](#)

For example, a 12V 100Ah battery has 1200Wh capacity. Considering inverter efficiency (usually 80-95%) and power factors, a 1000W inverter is suitable to avoid ...



ESS



[Sizing the Right Inverter for 100ah Battery](#)

In this guide, I will walk you through the process of sizing the right inverter for a 100ah battery along with an inverter size chart.

What Size Inverter Can I Run Off a 100Ah Battery? Maximize ...

Inverters operate at around 85-90% efficiency. Therefore, you can maximize your power capacity by using an inverter rated around 1000 to 1200 watts. This size allows you to ...

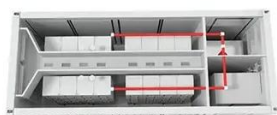


How to Determine What Size Inverter You Can Run Off a 100Ah ...

A 100Ah battery typically operates at 12 volts, allowing it to provide up to 1200 watt-hours of energy. This guide will help you understand how to select the right inverter size for your needs.

[What size inverter can I run off a 100Ah lithium battery?](#)

Yes, a 1000W inverter is safe for continuous use with a 100Ah lithium battery. It matches the typical output of the battery and allows for stable operation of multiple devices without risking ...



What Size Inverter Do I Need? A Comprehensive Guide to Inverter ...

Proper inverter sizing affects energy efficiency, system longevity, and whether your inverter works well with your battery setup. This inverter sizing guide will take you through the ...

[What Size Inverter for 100Ah Battery? - MWXNE POWER](#)



In this guide, we'll walk you through what size inverter works best with a 100Ah battery, how long your battery will last, and how to size your inverter-and-battery combo for ...

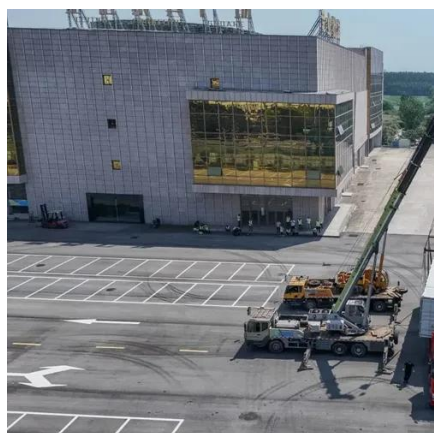


[What Inverter Size is Best for a 100Ah Battery?](#)

A 12V 100Ah battery can reasonably power an inverter up to 1000W-1200W for short periods. For continuous loads, 500W-800W is more efficient and battery-friendly.

[What Size Inverter Can I Run Off a 100Ah Battery? A ...](#)

The right combination ensures efficiency, longevity, and optimal performance. This detailed guide will help you navigate through the decision-making process to determine the ...



What Size Inverter for 100Ah Battery? , 12V, 24V, 48V Battery ...

In this video, I break down everything you need to know about inverter sizing, battery compatibility, and power runtime -- in simple, practical terms. We'll calculate how many watts (W) or

What Size Inverter for 100Ah Battery? , 12V, 24V, 48V Battery Inverter



In this video, I break down everything you need to know about inverter sizing, battery compatibility, and power runtime -- in simple, practical terms. We'll calculate how ...





Contact Us

For catalog requests, pricing, or partnerships, please visit:

<https://www.asimer.es>

Phone: +34 910 56 87 42

Email: info@asimer.es

Scan the QR code to access our WhatsApp.

