



How big an inverter should I use for 48v280w





Overview

To calculate the appropriate inverter size for a 48V battery system, you need to determine the total wattage of the devices you plan to power. The formula is:
Inverter Size (Watts) = Total Load (Watts) / System Voltage (48V).

To calculate the appropriate inverter size for a 48V battery system, you need to determine the total wattage of the devices you plan to power. The formula is:
Inverter Size (Watts) = Total Load (Watts) / System Voltage (48V).

To calculate the appropriate inverter size for a 48V battery system, you need to determine the total wattage of the devices you plan to power. The formula is:
Inverter Size (Watts) = Total Load (Watts) / System Voltage (48V). This calculation ensures that the inverter can handle the required load.

This guide breaks down what size solar inverter you actually need—so your setup runs smooth, efficient, and stress-free from day one. **What Size Solar Inverter Do I Need?**

A solar inverter should closely match your solar system's output in kW—typically within 80% to 120% of your total panel capacity.

Determining what size inverter do I need depends on several critical factors related to your power consumption, device requirements, and system design. The first step is calculating the total wattage of all devices you want to power simultaneously. This includes every appliance, light, and piece of.

A properly sized solar inverter typically lasts 10-15 years, though premium or microinverter units can reach 20-25 years with good maintenance. Think of inverter sizing like choosing the right-sized engine for your car. Too small, and you'll struggle on hills. Too large, and you're paying for power.

Choosing the right solar inverter size is critical—and one of the most common questions: what solar inverter size do I need?

Whether you are installing a rooftop system in California, powering a remote cabin in Alberta, or sizing for a community center in Rajasthan, getting it right means.



Result: To power the above appliances simultaneously, you'll need a minimum inverter size of 600 watts. Remember, the x1.4 adds extra security if any of your appliances are inductive loads. Related Reading: [9 Best Off-grid Inverters \(Complete 2025 List\)](#) We have summarized the appliances that. How do I choose the right inverter size?

Here is our last bit of advice on how to select the correct inverter size: Check our inverter size chart. List all your appliances in the function of their power output. Apply our inverter size formula. Do not exceed 85% of your inverter's maximum power continuously. Oversize your inverter for extra appliances in the future.

What are the different solar inverter sizes?

Solar generators range in size from small generators for short camping trips to large off-grid power systems for a boat or house. Consequently, inverter sizes vary greatly. During our research, we discovered that most inverters range in size from 300 watts up to over 3000 watts. In this article, we guide you through the different inverter sizes.

What is inverter size?

Inverter size is measured in watts (W) and depends on two key specs: * Important: Your inverter must cover both the total running watts of all devices plus the highest surge wattage of any single appliance. 3. Step-by-Step: How to Calculate Your Inverter Size Include: Home: Fridge, lights, TV, microwave, AC.

How do I choose a rated inverter?

You must consider this to select an appropriately rated inverter. A straightforward method to calculate inverter size is: $\text{Inverter Size (VA)} = \text{Total Wattage (W)} / \text{Power Factor (0.7-0.8)}$ Once calculated, choose the next standard inverter size above your result to ensure safe and efficient operation.



How big an inverter should I use for 48v280w



What Size Inverter Do I Need? A Comprehensive Guide to Inverter ...

Proper inverter sizing affects energy efficiency, system longevity, and whether your inverter works well with your battery setup. This inverter sizing guide will take you through the ...

[What Size Solar Inverter Do I Need? Experts ...](#)

Picking the right solar inverter isn't rocket science, but it's not a wild guess either. Match your inverter size to your solar panel output, ...

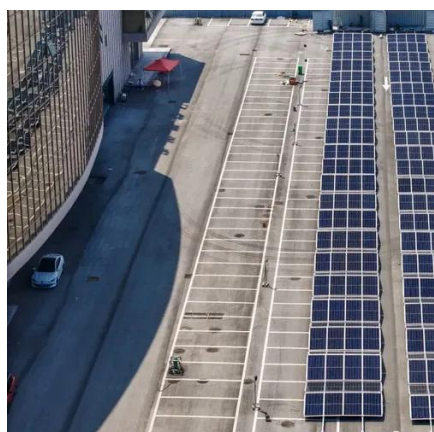


[The Only Inverter Size Chart You'll Ever Need](#)

During our research, we discovered that most inverters range in size from 300 watts up to over 3000 watts. In this article, we guide you through the different inverter sizes. ...

How Do You Calculate the Appropriate Inverter Size for a 48V ...

To calculate the size of the inverter you need, determine the total wattage of all devices you plan to power simultaneously. Add up their wattages, then choose an inverter with ...



48V Inverter: The Ultimate Guide to Efficient and Scalable Power

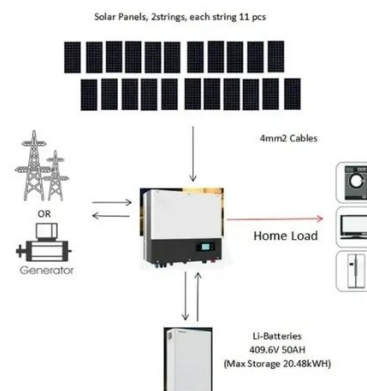
As solar power systems grow in size and capability, the demand for stable and scalable inverter solutions has increased. A 48V inverter is ideal for solar arrays above 3kW ...



How to Choose the Right Size Solar Inverter: Step-by-Step with ...

[Solar Inverter Sizing Guide: How to Size Your Inverter](#)

Learn how to properly size your solar inverter with our complete guide. Discover the optimal DC-to-AC ratio and avoid costly ...

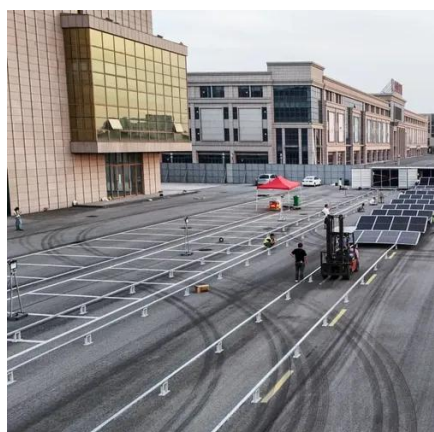


[How to Choose the Right Size Solar Inverter: Step ...](#)

This guide walks you through calculating inverter size based on panel capacity, power usage, and safety margins. We use real ...



This guide walks you through calculating inverter size based on panel capacity, power usage, and safety margins. We use real examples from installations in Texas and ...

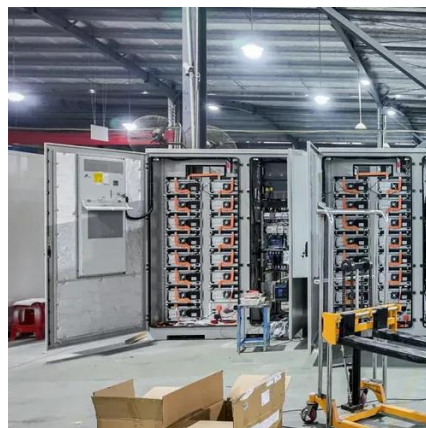


[The Only Inverter Size Chart You'll Ever Need](#)

During our research, we discovered that most inverters range in size from 300 watts up to over 3000 watts. ...

[Inverter Size Calculator , Find Your Perfect Power Match](#)

Minimum Inverter Size: The smallest inverter that can handle your highest-wattage appliance. Ideal if you run one device at a time - or several devices whose combined draw ...



What Size Inverter Do You Need? A Complete Guide for Home, ...

Choosing the right inverter size is crucial--too small, and your appliances won't work; too large, and you'll waste money. This guide will help you determine the ideal inverter ...

[Solar Inverter Sizing Guide: How to Size Your Inverter](#)



Learn how to properly size your solar inverter with our complete guide. Discover the optimal DC-to-AC ratio and avoid costly sizing mistakes.



**200kWh
Battery Cluster**



Inverter Size Calculator

The Inverter Size Calculator is a digital tool that allows you to determine the correct inverter size needed for a specific total wattage load, considering factors like safety margins and inverter ...

[What Size Solar Inverter Do I Need? Experts Break It Down](#)

Picking the right solar inverter isn't rocket science, but it's not a wild guess either. Match your inverter size to your solar panel output, leave a little headroom, and don't cheap ...



[What Size Inverter Do I Need? A Comprehensive Guide to ...](#)

Proper inverter sizing affects energy efficiency, system longevity, and whether your inverter works well with your battery setup. This inverter sizing guide will take you through the ...





Contact Us

For catalog requests, pricing, or partnerships, please visit:

<https://www.asimer.es>

Phone: +34 910 56 87 42

Email: info@asimer.es

Scan the QR code to access our WhatsApp.

