



How big is the solar light for home use





Overview

Choosing the proper size of solar light panels involves several critical considerations, including 1. determining available space, 2. understanding light requirements, 3. evaluating wattage needs, and 4. considering seasonal variations.

Choosing the proper size of solar light panels involves several critical considerations, including 1. determining available space, 2. understanding light requirements, 3. evaluating wattage needs, and 4. considering seasonal variations.

How many watts does a large solar light use for a home?

Large solar lights for residential use typically consume between 10 to 50 watts, depending on their design and functionality. 1. Brightness requirements vary significantly based on their intended application; for example, security lights may.

In order to calculate the solar lighting requirements for a given area, you need to consider several factors, including the size of the area, the required illumination level, the efficiency of the lighting fixtures, and the solar panel and battery specifications. Here's a step-by-step guide to.

Sizing is a term used to describe the measurements and specifications of an off-grid solar lighting system, which is a system that is not connected to the main power grid. While this task may seem daunting as there are many details taken into account when sizing an off-grid system, our expert team.

When it comes to energy-efficient lighting, solar lights are becoming a household favorite—and for good reason. They are eco-friendly, reduce electricity bills, and require minimal maintenance. With the rising awareness of solar power benefits, more homeowners are turning to solar light for home.

Once you've determined the right kind of solar panels for your home, look at your latest electric bill. This will help you determine your average annual energy usage, which will tell you how much electricity your solar panels must produce. Next, you'll need to determine the necessary solar panel.



Choosing the proper size of solar light panels involves several critical considerations, including 1. determining available space, 2. understanding light requirements, 3. evaluating wattage needs, and 4. considering seasonal variations. Each of these elements plays a significant role in the. What size solar panel do I Need?

The size of the solar panel you need will depend on a few factors, including the wattage of the lights and the average amount of sunlight your location receives. A general rule of thumb is that you'll need one watt of solar power for every hour that you want to run your lights.

Can a 100 watt solar panel power a 60 watt light bulb?

A 100-watt solar panel can generate enough electricity to power 10 60-watt light bulbs for 6 hours per day. So, don't need a new electrical panel for solar. In other words, if you use all the electricity generated by the solar panel during the daytime, you could theoretically have 60 watts of lighting running in your home at night.

How much roof space is needed for solar panels?

To illustrate how much roof space is needed for solar panels, let's say you decide to install a 9.6kW system to offset your home's electricity use. This capacity can be created with 24 72-cell 400W solar panels, covering about 21 square feet each.

How many solar panels do I need to run a grow light?

You may be wondering how many solar panels you need to run a grow light. The answer depends on a few factors, including the type of grow light you are using and the amount of sunlight your location receives. If you are using a standard incandescent grow light, you will need about 40 watts of power per square foot of growing space.



How big is the solar light for home use

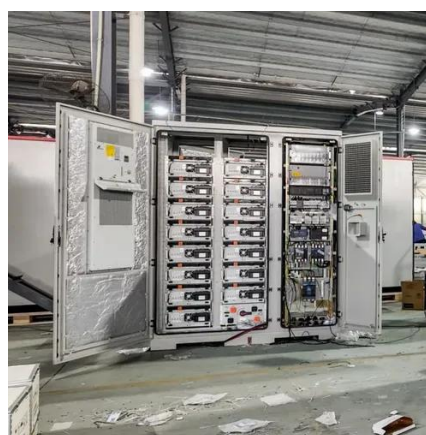


Big Solar Lights: Lighting Explained

Big solar lights, characterized by their larger size and enhanced capabilities, have become a focal point in outdoor lighting solutions. This article delves into the intricacies of big solar lights, ...

[Sizing Your Solar Lighting System: A Complete Guide](#)

Learn how to size your solar lighting system efficiently with our guide. Enhance your outdoor lighting with the right measurements for optimal performance and energy savings.



TAX FREE

ENERGY STORAGE SYSTEM

Product Model
HJ-ESS-215A(100KW/215KWh)
HJ-ESS-115A(50KW 115KWh)

Dimensions
1600*1280*2200mm
1600*1200*2000mm

Rated Battery Capacity
215KWH/115KWH

Battery Cooling Method
Air Cooled/Liquid Cooled

How Big are Solar Panels?

Solar panels come in three main cell sizes: 60-cell, 72-cell, and 96-cell. The most commonly used sizes for residential and commercial purposes are 60-cell and 72-cell. This is largely because ...

[Choosing the Right Solar Light for Home](#)

Discover how to choose the best solar light for home with this expert guide. Learn about solar power, efficiency, and top tips to light up



Solar Panel Size and Wattage Guide: What Works Best for Homes

High-quality residential solar installations in the US typically utilize solar panels rated between 250W and 430W. As solar panels get more efficient and produce more ...

[How Big of a Solar Panel Do I Need to Run Lights?](#)

How Many Solar Panels to Run Lights? How Many Lights Will A 100-Watt Solar Panel Run? How Much Solar Do I Need Calculator? How Many Solar Panels to Run Grow Light? How Many Solar Panels Do I Need For 500 Kwh Per month? How Many Solar Panels Do I Need For 2000 Kwh Per month? How Many 150 Watt Light Bulbs Could The Solar Panel Completely Light Up? How Many Solar Panels Do I Need For 2,500 Kwh Per month? How Many Solar Panels Do I Need to Run A 1000 Watt Light? What Can A 500 Watt Solar Panel Run? If you're considering solar for your home, one of the first questions you'll probably ask is, "How much solar do I need?" The answer to this question depends on a few factors: your electricity usage, roof size and orientation, and the amount of sunlight that hits your property. Another important factor to consider is the efficiency and output of the See more on powerclues Soli Aydinlatma



Solar Lighting Calculation / Sizing by Soli Lighting 40th year



In order to calculate the solar lighting requirements for a given area, you need to consider several factors, including the size of the area, the required illumination level, the efficiency of the ...



[How many watts does a large solar light use for a ...](#)

In evaluating large solar lights for home use, several key factors merit consideration. It is evident that wattage consumption varies ...

Solar Lighting Calculation / Sizing by Soli Lighting 40th year

In order to calculate the solar lighting requirements for a given area, you need to consider several factors, including the size of the area, the required illumination level, the efficiency of the ...



[How Big of a Solar Panel Do I Need to Run Lights?](#)

In other words, if you use all the electricity generated by the solar panel during the daytime, you could theoretically have 60 watts of lighting running in your home at night.



Solar Panel Calculator , Lowe's

Here's the formula for determining solar power. You can plug in your own numbers and use it as a solar power calculator. To calculate the number of solar panels your home ...



How Big are Solar Panels?

Solar panels come in three main cell sizes: 60-cell, 72-cell, and 96-cell. The most commonly used sizes for residential and commercial purposes are ...



[How to choose the size of solar light panels .](#) [NenPower](#)

Choosing the proper size of solar light panels involves several critical considerations, including 1. determining available space, 2. understanding light requirements, ...



[How many watts does a large solar light use for a home?](#)

In evaluating large solar lights for home use, several key factors merit consideration. It is evident that wattage consumption varies widely among different models, ...





Contact Us

For catalog requests, pricing, or partnerships, please visit:

<https://www.asimer.es>

Phone: +34 910 56 87 42

Email: info@asimer.es

Scan the QR code to access our WhatsApp.

