



# How big of an inverter should I connect to 12v20ah





## Overview

---

After hands-on testing and side-by-side comparison, I confidently recommend the BELTTT 2000W Pure Sine Wave Inverter as your best-sized inverter for a 12-volt battery—perfect when power quality and capacity really matter. Top Recommendation: BELTTT 2000W Pure Sine Wave Inverter, 12V.

After hands-on testing and side-by-side comparison, I confidently recommend the BELTTT 2000W Pure Sine Wave Inverter as your best-sized inverter for a 12-volt battery—perfect when power quality and capacity really matter. Top Recommendation: BELTTT 2000W Pure Sine Wave Inverter, 12V.

Match the inverter's continuous wattage rating to the battery's discharge capacity. For a 12V 200Ah battery (2.4kWh), a 2000W inverter is ideal. Formula: Inverter Wattage  $\leq$  (Battery Voltage  $\times$  Ah Rating  $\times$  0.8). Factor in surge power needs but prioritize sustained loads. Always check the battery's.

An inverter is a device that turns the power from a 12 volt DC battery, like the one in your car or truck, into the 120 volt AC power that runs all of the electronics in your house. You can use one of these devices to power all sorts of devices in your car, but it's important to figure out how big.

After hands-on testing and side-by-side comparison, I confidently recommend the BELTTT 2000W Pure Sine Wave Inverter as your best-sized inverter for a 12-volt battery—perfect when power quality and capacity really matter. Top Recommendation: BELTTT 2000W Pure Sine Wave Inverter, 12V to 120V AC, USB.

Determining what size inverter do I need depends on several critical factors related to your power consumption, device requirements, and system design. The first step is calculating the total wattage of all devices you want to power simultaneously. This includes every appliance, light, and piece of.

To calculate the Size of your solar array, you first need to know your battery bank's capacity, usually expressed in amp-hours (Ah) and voltage (V). For example: 12V  $\times$  100Ah = 1200Wh (or 1.2kWh) This figure tells you how much energy needs to be replenished. Daily Consumption and Charging Time If.

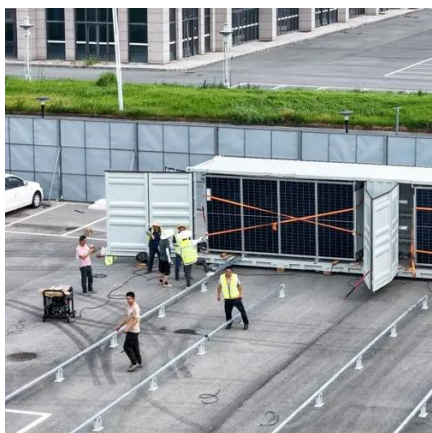
Choosing the right inverter size is crucial—too small, and your appliances won't



work; too large, and you'll waste money. This guide will help you determine the ideal inverter size for your specific needs, whether for home backup, RV living, or off-grid solar power. 1. Introduction: Why Inverter.



## How big of an inverter should I connect to 12v20ah



### What Size Inverter Do I Need? A Comprehensive Guide to Inverter ...

Proper inverter sizing affects energy efficiency, system longevity, and whether your inverter works well with your battery setup. This inverter sizing guide will take you through the ...

### [Inverter Size Calculator . Find Your Perfect Power Match](#)

The inverter size calculator takes the guesswork out of choosing the right inverter. Simply select your appliances below, and you'll instantly see the inverter size you need.



### Determining the Solar and Inverter Size Needed to Charge a Battery

This guide will walk you through everything you need to know to calculate the optimal Size of your solar and inverter setup to charge batteries effectively and safely.

### [Solar Inverter & Battery Sizing Calculator](#)

In this step, you will verify what will help you choose the correct battery size. The battery size determines how long you can take this load. Most people select a 2-hour backup.



### [Solar Inverter & Battery Sizing Calculator](#)

In this step, you will verify what will help you choose the correct battery size. The battery size determines how long you can take ...



### [Calculate Battery Size for Inverter Calculator](#)

By inputting critical parameters such as power consumption, inverter efficiency, and desired usage time, this calculator provides a ...



### [What Size Inverter Do I Need? A Comprehensive Guide to ...](#)

Proper inverter sizing affects energy efficiency, system longevity, and whether your inverter works well with your battery setup. This inverter sizing guide will take you through the ...



### [What Size Inverter Do You Need? A Complete ...](#)





Choosing the right inverter size is crucial--too small, and your appliances won't work; too large, and you'll waste money. This guide will ...



## What Size Inverter Do You Need? A Complete Guide for Home, ...

Choosing the right inverter size is crucial--too small, and your appliances won't work; too large, and you'll waste money. This guide will help you determine the ideal inverter ...



48V 100Ah

## [What Size Inverter You Need \(Calculations + Battery\)](#)

To ascertain the size of the inverter you need, you first need to know precisely how much power your devices ...



## [Can an Inverter Be Too Big for Your Battery System?](#)

Match the inverter's continuous wattage rating to the battery's discharge capacity. For a 12V 200Ah battery (2.4kWh), a 2000W inverter is ideal.  
Formula: Inverter Wattage



## Best Sized Inverter For 12 Volt Battery [Updated On: December ...]



Choosing the right inverter size for a 12-volt battery involves matching the inverter's power output with the power requirements of connected devices. When appropriately sized, ...



### **Find the Right Inverter Size: How Big An Inverter Do You need?**

Choosing the right inverter size for a 12-volt battery involves matching the inverter's power output with the power requirements of ...

### [Determining the Solar and Inverter Size Needed to ...](#)

This guide will walk you through everything you need to know to calculate the optimal Size of your solar and inverter setup to charge ...



### [What Size Inverter You Need \(Calculations + Battery\)](#)

To ascertain the size of the inverter you need, you first need to know precisely how much power your devices require.

### [Calculate Battery Size for Inverter Calculator](#)



By inputting critical parameters such as power consumption, inverter efficiency, and desired usage time, this calculator provides a precise battery size recommendation ...



## Find the Right Inverter Size: How Big An Inverter Do You need?

The right size inverter for your specific application depends on how much wattage your devices require. This information is usually printed somewhere on electronic devices, ...





## Contact Us

---

For catalog requests, pricing, or partnerships, please visit:

<https://www.asimer.es>

Phone: +34 910 56 87 42

Email: [info@asimer.es](mailto:info@asimer.es)

Scan the QR code to access our WhatsApp.

