



How far should the solar container communication station inverter be from residents





Overview

While it is possible for solar panels to be installed up to 500 feet from your house and, therefore, the inverter, it isn't practical. Fifty feet or less is typically recommended to keep energy losses low.

While it is possible for solar panels to be installed up to 500 feet from your house and, therefore, the inverter, it isn't practical. Fifty feet or less is typically recommended to keep energy losses low.

Understanding solar panel inverter distance is particularly relevant for homeowners and businesses with specific space and safety considerations, such as those who prefer to store their solar battery and inverter in a separate, temperature-controlled environment like a guest house. By addressing.

How far can a solar inverter be from the main panel?

Where is the best place to put a solar inverter?

How much space do you need around an inverter?

Can sunlight directly hitting the inverter affect its efficiency?

Does Wi-Fi connectivity impact inverter placement?

Could installing the inverter.

How far can the solar panels be from the equipment. And how far can the equipment be from the house?

With high voltage dc used on modern solar systems the distance between panels and inverters can be quite far 100s feet possible. Inverters and batteries should be close to the house to minimize.

One of the most significant factors that influence how distance can solar panels go from the house is the placement of the inverter. Inverters change direct current (DC) from the solar panels into alternating current (AC) for home use. Thus, locating the inverter candidly as per the layout of the.



Follow the table below for maximum distances for wired communication between system components. Wire gauge must meet local codes.

The distance between solar panels and the power source should ideally be within 150 feet to minimize energy loss. 3. Local regulations often dictate the placement of solar panels; adherence to these guidelines is essential for installation. 4. Additionally, the location of solar panels should.



How far should the solar container communication station inverter be



[How Far Can Solar Panels Be From Inverter](#)

Ideally, solar panels should be as close to the inverter and charge controller as possible. In situations where the panels are roof ...

Plan Distance Between Components

Follow the table below for maximum distances for wired communication between system components. Wire gauge must meet local codes.



Distance Limitations for Solar Panels: A Comprehensive Analysis

If your solar panel installation is far away from your house, you have to calculate exactly how far away and how much power your system will be operating on. Cable runs are always going to ...

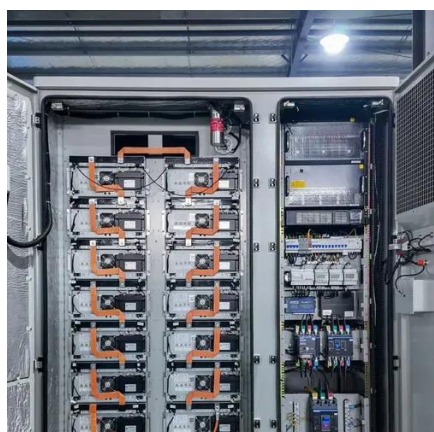
Is it OK to install the solar container communication station ...

Options for your solar inverter location are crucial for optimal performance and longevity of your solar energy system. You need to consider factors such as accessibility for maintenance, ...



[How Far Can Solar Inverter Be From Main Panel?](#)

Inverters should be installed as close to the solar panels as possible, with a recommended distance of 30 feet (9 meters). A shorter distance improves system efficiency by ...



[Distances from panels to inverter , DIY Solar Power Forum](#)

With high voltage dc used on modern solar systems the distance between panels and inverters can be quite far 100s feet possible. Inverters and batteries should be close to the ...



Solar Panel Inverter Distance: How Far Can They Be from Your ...

In conclusion, managing your solar panel inverter distance by storing the inverter and battery in a guest house and running the lines to the main panel over 100 feet is practical.



[Optimal Solar Inverter Placement for Efficiency & Longevity](#)



Discover expert tips on solar inverter placement to maximize efficiency, lifespan, and safety. Learn optimal locations, clearance, and installation best practices.



[Optimizing Inverter Placement: A Guide for Efficient Solar](#)

One crucial factor to consider when locating an inverter is its proximity to the solar panels. Minimizing energy loss due to long DC cable runs is essential for maximizing system ...



[Distance Limitations for Solar Panels: A ...](#)

If your solar panel installation is far away from your house, you have to calculate exactly how far away and how much power your system will be ...



[How far should I install solar energy? , NenPower](#)

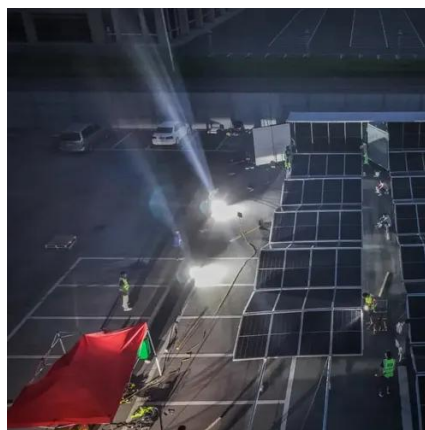
The ideal distance for solar panels from the inverter generally should not exceed 150 feet. Longer distances can lead to energy losses ...



Is it OK to install the solar container communication station inverter



Options for your solar inverter location are crucial for optimal performance and longevity of your solar energy system. You need to consider factors such as accessibility for maintenance, ...



[How far should I install solar energy? , NenPower](#)

The ideal distance for solar panels from the inverter generally should not exceed 150 feet. Longer distances can lead to energy losses caused by resistance in the wiring, ...

[How Far Can Solar Panels Be From Inverter](#)

Ideally, solar panels should be as close to the inverter and charge controller as possible. In situations where the panels are roof-mounted, this typically translates to anywhere ...





Contact Us

For catalog requests, pricing, or partnerships, please visit:

<https://www.asimer.es>

Phone: +34 910 56 87 42

Email: info@asimer.es

Scan the QR code to access our WhatsApp.

