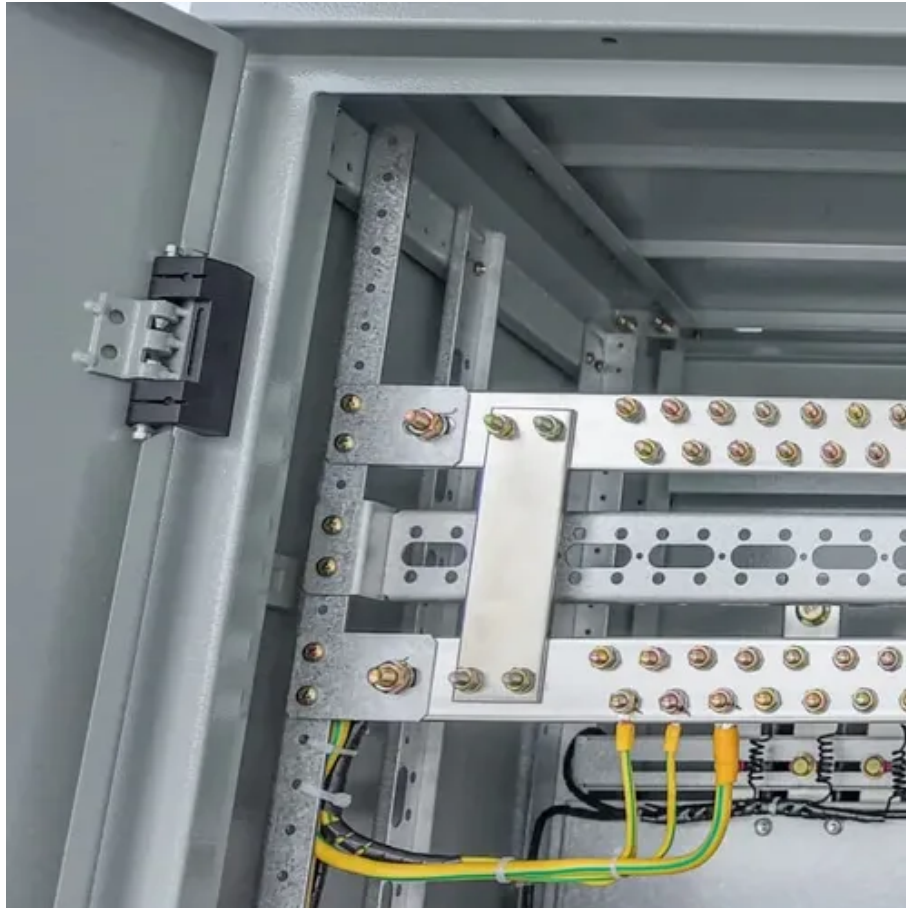




How many kilowatts of commercial solar energy





Overview

Commercial solar panels can generate between 250 to 600 watts per panel, depending on size and efficiency. A typical 50 kW solar system, with about 125 panels, can produce 6,000 to 9,000 kWh per month. Factors like location, panel orientation, and shading impact energy.

Commercial solar panels can generate between 250 to 600 watts per panel, depending on size and efficiency. A typical 50 kW solar system, with about 125 panels, can produce 6,000 to 9,000 kWh per month. Factors like location, panel orientation, and shading impact energy.

A single commercial solar panel typically produces between 400 and 600 watts of power under standard test conditions. However, total system power output depends on several factors—most notably the number of panels, available roof or ground space, and local sunlight hours. For example, a

Generally, the output of a commercial solar panel system is measured in kilowatt-hours (kWh), a standard unit of energy. A typical commercial solar pv installation can generate anywhere between 20 kWh to 100 kWh per day, depending on the size and configuration of the system. How much energy does a

Commercial solar panels can generate between 250 to 600 watts per panel, depending on size and efficiency. A typical 50 kW solar system, with about 125 panels, can produce 6,000 to 9,000 kWh per month. Factors like location, panel orientation, and shading impact energy production. Using software.

These panels convert sunlight into electricity, providing a clean and renewable energy source that replaces or supplements the traditional grid power. As companies look to decrease their carbon footprints and gain a competitive edge, understanding the power generation capabilities of commercial

Commercial solar panels typically produce between 250 watts and 600 watts per panel, depending on their size and efficiency. Here's a breakdown of how much energy a commercial solar system can generate: Daily Output: A single 400W panel in optimal sunlight can generate around 2 kWh to 3 kWh per.

How much energy does a commercial solar panel produce?



On average, a single commercial solar panel can produce between 1.5 to 2.5 kilowatt-hours (kWh) per day depending on local sun exposure, orientation, and weather conditions. Over the course of a year, this adds up to roughly 500 to 900 kWh per.



How many kilowatts of commercial solar energy

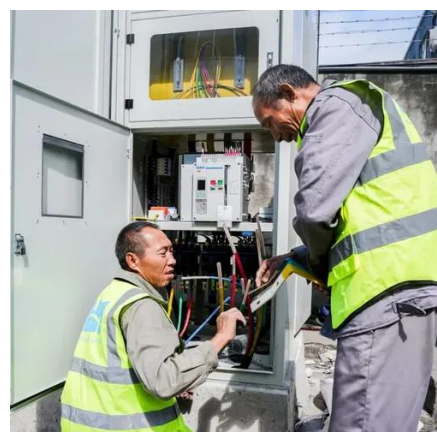


[How Much Energy Do Commercial Solar Panels Produce?](#)

Generally, the output of a commercial solar panel system is measured in kilowatt-hours (kWh), a standard unit of energy. A typical commercial solar pv installation can generate ...

[How Much Energy Does A Solar Panel Produce?](#)

Most solar panels have cells that can convert 17-23% of ...



[How Much Power Does A Commercial Solar Panel Produce](#)

Solar arrays, typically around 5kW and occupying 500 square feet of space, produce about 600-900kWh of AC per month. Commercial solar panels are engineered to ...

How Much Energy Can a Commercial Solar Panel Produce for ...

Commercial solar panels can generate between 250 to 600 watts per panel, depending on size and efficiency. A typical 50 kW solar system, with about 125 panels, can ...



[How Much Energy Do Commercial Solar Panels ...](#)

Generally, the output of a commercial solar panel system is measured in kilowatt-hours (kWh), a standard unit of energy. A typical ...



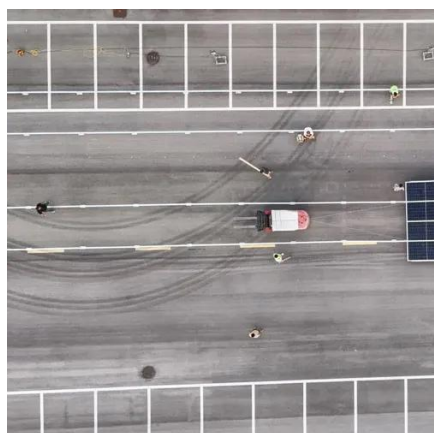
[How Much Energy Can Commercial Solar Power Systems ...](#)

Investment in efficient solar panels can greatly boost the energy production of your commercial solar power system. Why Is Geographic Location and Sunlight Availability Crucial? The ...



[How Much Power Do Commercial Solar Panels ...](#)

On average, a small to medium-sized commercial building might consume around 30,000 to 50,000 kilowatt-hours (kWh) annually, while larger ...



[Understanding Energy Output in Commercial Solar Projects](#)



Typically, a single commercial panel can produce between 300 to 600 watts per hour under standard test conditions. For a large-scale installation, this could translate into ...



[How Much Power Does a Commercial Solar Panel Generate?](#)

Learn how much power commercial solar panels generate, what affects energy output and efficiency, and how solar installation can reduce business energy costs.

[How Much Energy Can a Commercial Solar Panel ...](#)

Commercial solar panels can generate between 250 to 600 watts per panel, depending on size and efficiency. A typical 50 kW solar ...



[How Much Energy Does A Solar Panel Produce? .. EnergySage](#)

Most solar panels have cells that can convert 17-23% of the sunlight that hits them into usable solar energy.



[How much energy does a commercial solar panel produce?](#)



On average, a single commercial solar panel can produce between 1.5 to 2.5 kilowatt-hours (kWh) per day depending on local sun exposure, orientation, and weather ...



[How Much Power Does a Commercial Solar Panel ...](#)

Learn how much power commercial solar panels generate, what affects energy output and efficiency, and how solar installation can ...



[How Much Energy Do Commercial Solar Panels Produce?](#)

Commercial solar panels typically produce between 250 watts and 600 watts per panel, depending on their size and efficiency. Here's a breakdown of how much energy a ...



[How Much Energy Do Commercial Solar Panels ...](#)

Commercial solar panels typically produce between 250 watts and 600 watts per panel, depending on their size and efficiency. Here's a ...



[How Much Power Do Commercial Solar Panels Generate?](#)



On average, a small to medium-sized commercial building might consume around 30,000 to 50,000 kilowatt-hours (kWh) annually, while larger businesses may use several hundred ...





Contact Us

For catalog requests, pricing, or partnerships, please visit:

<https://www.asimer.es>

Phone: +34 910 56 87 42

Email: info@asimer.es

Scan the QR code to access our WhatsApp.

