



How many kilowatts of inverters are required for solar





Overview

In most cases, the inverter size should be close to the size of your solar panel system, within a 33% ratio. For example, a 6.6kW solar array often pairs with a 5kW inverter to balance efficiency, cost, and performance.

In most cases, the inverter size should be close to the size of your solar panel system, within a 33% ratio. For example, a 6.6kW solar array often pairs with a 5kW inverter to balance efficiency, cost, and performance.

In most cases, the inverter size should be close to the size of your solar panel system, within a 33% ratio. For example, a 6.6kW solar array often pairs with a 5kW inverter to balance efficiency, cost, and performance. This article explains how to calculate your inverter size, what affects it, and.

A solar inverter should closely match your solar system's output in kW—typically within 80% to 120% of your total panel capacity. Too big = wasted money. Too small = wasted energy What Is a Solar Inverter and Why Does Size Matter?

Swap out old appliances for energy-efficient ones to cut down your.

Your solar inverter serves as the translator between your panels and your home's electrical system. Solar panels generate direct current (DC) electricity, but your home runs on alternating current (AC). The inverter handles this crucial conversion, and its size directly impacts your system's.

Inverter: one or two inverters of a combined 10 kW–15 kW A 12 kW solar installation in a farm near Berlin utilized a 10 kW inverter with excellent results—saving a couple of hundred dollars on initial cost and still registering peak output. 3. Equate Load Requirements, Not Panel Watts It's not.

Before selecting an appropriate inverter size, there are several key factors to consider, including the total system size (DC wattage of all solar panels), expected energy consumption (daily and peak usage in kW), future expansion plans, local climate, and solar irradiance levels. System Size.

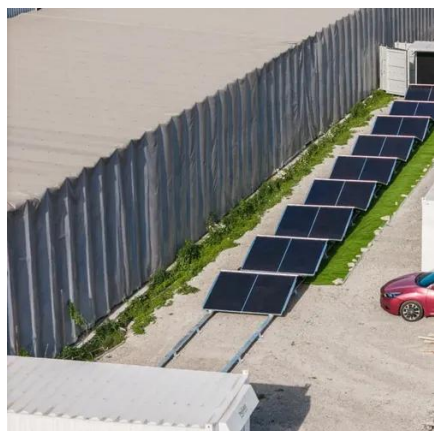
Generally, it's recommended to size the inverter to 80-100% of the DC system's rated capacity. Before determine the inverter size, the most important thing is to



calculate your average daily power consumption (kWh) and calculate your solar panel array size to match your power consumption. You could.



How many kilowatts of inverters are required for solar



[DIY Solar Calculator: Size Panels, Batteries & Inverter](#)

Find out how many solar panels, batteries, and inverter capacity you need for your off-grid solar system. Going solar doesn't have to be confusing. This free DIY solar calculator ...

[calculate inverter size for solar + Sizing Formula](#)

Common sizes range between 1kW and upwards over 10kW. In order to accurately size your inverter, here is a very simple formula: ...



[Solar Inverter Sizing Calculator: Important Guide : ...](#)

For a 10 kW solar system, an inverter size between 8 kW to 12.5 kW is typically recommended. However, specific requirements may ...

[Solar Inverter Sizing Guide for Maximum Efficiency , Mingch](#)

In most cases, the inverter size should be close to the size of your solar panel system, within a 33% ratio. For example, a 6.6kW solar array often pairs with a 5kW inverter to ...



[How Many kW Inverter is Needed for A Home Solar System?](#)

The inverter power required for a home solar system mainly depends on the size of the household electricity load, the total capacity of the photovoltaic panels and the system design.

[Solar Inverter Sizing Guide for Maximum Efficiency](#)

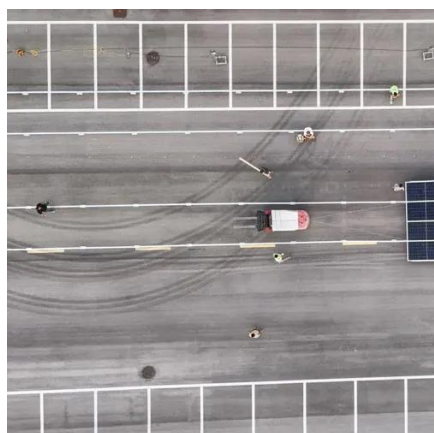
...

In most cases, the inverter size should be close to the size of your solar panel system, within a 33% ratio. For example, a 6.6kW solar ...



[Solar PV Inverter Sizing , Complete Guide](#)

Assuming an inverter efficiency of 95% and a derating factor of 0.9 (based on temperature and altitude), the required inverter capacity would be -. AC Inverter Capacity = ...



[What Size Solar Inverter Do I Need? Experts ...](#)



What Size Solar Inverter Do I Need? A solar inverter should closely match your solar system's output in kW--typically within 80% to ...



- LIQUID/AIR COOLING
- INTELLIGENT INTEGRATION
- PROTECTION IP54/IP55
- BATTERY /6000 CYCLES

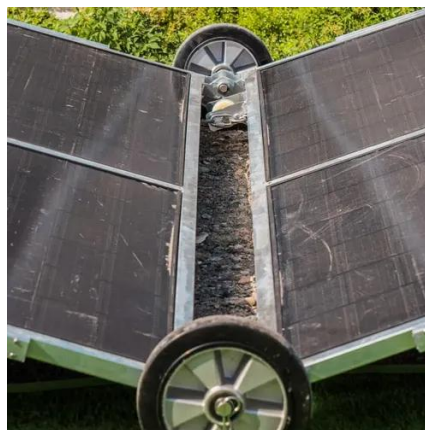


[calculate inverter size for solar + Sizing Formula](#)

Common sizes range between 1kW and upwards over 10kW. In order to accurately size your inverter, here is a very simple formula: projectiles. Inverter Size = Total Solar Panel ...

[How to Choose the Right Size Solar Inverter: Step ...](#)

Wondering what size solar inverter do I need for your solar system? This guide walks you through calculating inverter size based on ...



Solar Inverter Sizing Calculator: Important Guide : Electrical

For a 10 kW solar system, an inverter size between 8 kW to 12.5 kW is typically recommended. However, specific requirements may vary based on panel performance, ...

How to Choose the Right Size Solar Inverter: Step-by-Step with ...



Wondering what size solar inverter do I need for your solar system? This guide walks you through calculating inverter size based on panel capacity, power usage, and safety ...



[Inverter Size Calculator - self2solar](#)

Optimize your solar system by calculating the ideal inverter size. Simply input panel specs for a recommended inverter power range ...



[What Size Solar Inverter Do I Need? Experts Break It Down](#)

What Size Solar Inverter Do I Need? A solar inverter should closely match your solar system's output in kW--typically within 80% to 120% of your total panel capacity.



[Solar Inverter Sizing Guide: How to Size Your Inverter](#)

Learn how to properly size your solar inverter with our complete guide. Discover the optimal DC-to-AC ratio and avoid costly ...



[Inverter Size Calculator - self2solar](#)



Optimize your solar system by calculating the ideal inverter size. Simply input panel specs for a recommended inverter power range that ensures efficiency and safety today!



[Solar Inverter Sizing Guide: How to Size Your Inverter](#)

Learn how to properly size your solar inverter with our complete guide. Discover the optimal DC-to-AC ratio and avoid costly sizing mistakes.



Contact Us

For catalog requests, pricing, or partnerships, please visit:

<https://www.asimer.es>

Phone: +34 910 56 87 42

Email: info@asimer.es

Scan the QR code to access our WhatsApp.

