



# How many watts are there on both sides of a double-glass solar panel





## Overview

---

A standard double-glass photovoltaic panel typically delivers 360-600 watts per side depending on configuration . But wait, no – that's the combined output. The front side usually generates 85-90% of total power, with the backside contributing 10-15% through reflected light .

A standard double-glass photovoltaic panel typically delivers 360-600 watts per side depending on configuration . But wait, no – that's the combined output. The front side usually generates 85-90% of total power, with the backside contributing 10-15% through reflected light .

A standard double-glass photovoltaic panel typically delivers 360-600 watts per side depending on configuration . But wait, no – that's the combined output. The front side usually generates 85-90% of total power, with the backside contributing 10-15% through reflected light . Recent bids in China's.

This 580w solar panel use double-sided transparent backplane technology and half-cut technology. Double-sided output, rear side power gain, increase power generation. This results in better light trapping and improved current collection, resulting in lower LCOE and higher IRR. The tolerance in.

By encapsulating solar cells between two layers of glass, these modules offer unparalleled durability and efficiency. But what exactly sets them apart?

What are double glass solar modules?

Traditional solar panels typically feature a glass front and a polymer backsheet. In contrast, double glass.

Welcome to our technical resource page for How many watts are there on both sides of a double-glass solar panel ! Here, we provide comprehensive information about photovoltaic energy storage systems, BESS solutions, mobile power containers, EMS management systems, commercial storage, industrial.

The 555-580W Topcon Double Side Glass Solar Panel is a high-performance solar energy solution. Featuring cutting-edge Topcon technology, it boasts an impressive power range and durable double-sided glass construction. These panels harness



sunlight efficiently, making them a reliable choice for.

The solar cells sit between two pieces of strong glass. This simple change makes a huge difference in how well the panels work and how long they last. The glass we use is tempered. That means it's super strong. It can handle wind, hail, and weather that would damage regular panels. Regular solar.



## How many watts are there on both sides of a double-glass solar pane



### What are Double Glass Solar Panels?

Double-glass solar modules are made up of two layers of tempered glass that cover both sides of the solar panel. As snow accumulates on a typical solar panel or people ...

### [Ja Solar 580W N-Type Bifacial Double Glass \(Stack of 6 PCS\)](#)

With N-type bifacial technology, 580W power output, and enhanced LID resistance, it ensures superior performance, durability, and reliability. Perfect for residential, commercial, and utility ...



### [580W Solar Panel, Dual Glass Solar Panels](#)

N-Type Dual Glass Solar Panels are the latest high-efficiency solar panels on the market. This 580w solar panel use double-sided transparent backplane technology and half-cut technology.



### [Custom Double Glass Solar Panels: What You ...](#)

We combine double glass construction with back contact cells and can even customize the size, shape, and electrical configuration. ...



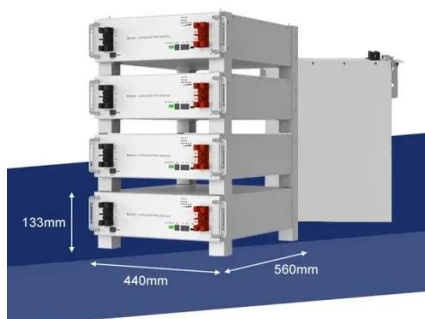
### Single Vs. Double Glass Solar Panels

Single glass solar panels typically feature a 3.2mm sheet for the front side and a backsheet made from a polymer material such as PVA. I didn't make our choice of solar panels hinge on ...

### **How many watts are there on both sides of a double-glass solar panel**

Why are double glass solar panels bifacial?

Thermal stability: The identical thermal expansion coefficients of the glass layers minimize stress on solar cells during temperature fluctuations. ...



### Custom Double Glass Solar Panels: What You Need to Know

We combine double glass construction with back contact cells and can even customize the size, shape, and electrical configuration. Whether you need a 100W small panel ...

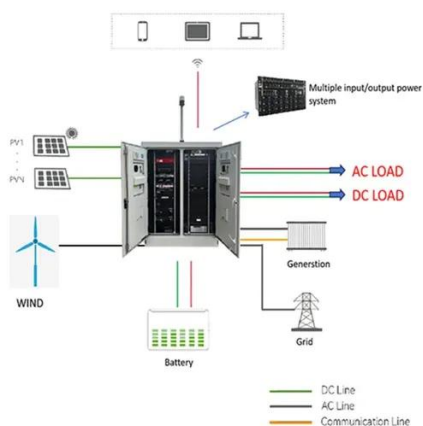
CE UN38.3 MSDS



### Double-Glass Photovoltaic Panels: Wattage per Side and ...



What's the Actual Power Output per Side of Double-Glass Solar Panels? Let's cut through the technical jargon. A standard double-glass photovoltaic panel typically delivers 360-600 watts ...



### [555-580w Topcon Double Side Glass Solar Panel](#)

The 555-580W Topcon Double Side Glass Solar Panel is a high-performance solar energy solution. Featuring cutting-edge Topcon technology, it boasts an impressive power range and ...

### What are Double Glass Solar Panels?

Double-glass solar modules are made up of two layers of tempered glass that cover both sides of the solar panel. As snow ...



### [Double the strengths, double the benefits](#)

Dual-sided energy Capture: Many double glass modules are bifacial, allowing them to harness sunlight from both sides. This can lead ...

[TOPCon Dual Glass 570W 580W 585W Solar Panels Supplier](#)

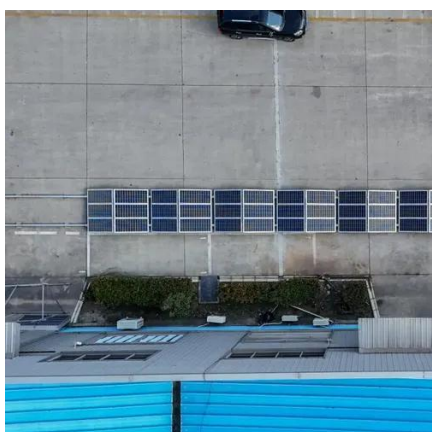


Upgrade your project with Sunpal's N-type TOPCon bifacial double glass 555W 560W 565W 570W 575W 580W 585W solar modules at factory prices.



### [TOPCon Dual Glass 570W 580W 585W Solar ...](#)

Upgrade your project with Sunpal's N-type TOPCon bifacial ...



### [555-580w Topcon Double Side Glass Solar Panel](#)

The 555-580W Topcon Double Side Glass Solar Panel is a high-performance solar energy solution. Featuring cutting-edge Topcon technology, it ...



### [Double the strengths, double the benefits](#)

Dual-sided energy Capture: Many double glass modules are bifacial, allowing them to harness sunlight from both sides. This can lead to energy gains of up to 25%, especially ...



**How many watts are there on both sides of a double-glass solar ...**



Why are double glass solar panels bifacial?

Thermal stability: The identical thermal expansion coefficients of the glass layers minimize stress on solar cells during temperature fluctuations. ...



### Single Vs. Double Glass Solar Panels

Single glass solar panels typically feature a 3.2mm sheet for the front side and a backsheet made from a polymer material such as PVA. I didn't ...



## Contact Us

---

For catalog requests, pricing, or partnerships, please visit:

<https://www.asimer.es>

Phone: +34 910 56 87 42

Email: [info@asimer.es](mailto:info@asimer.es)

Scan the QR code to access our WhatsApp.

