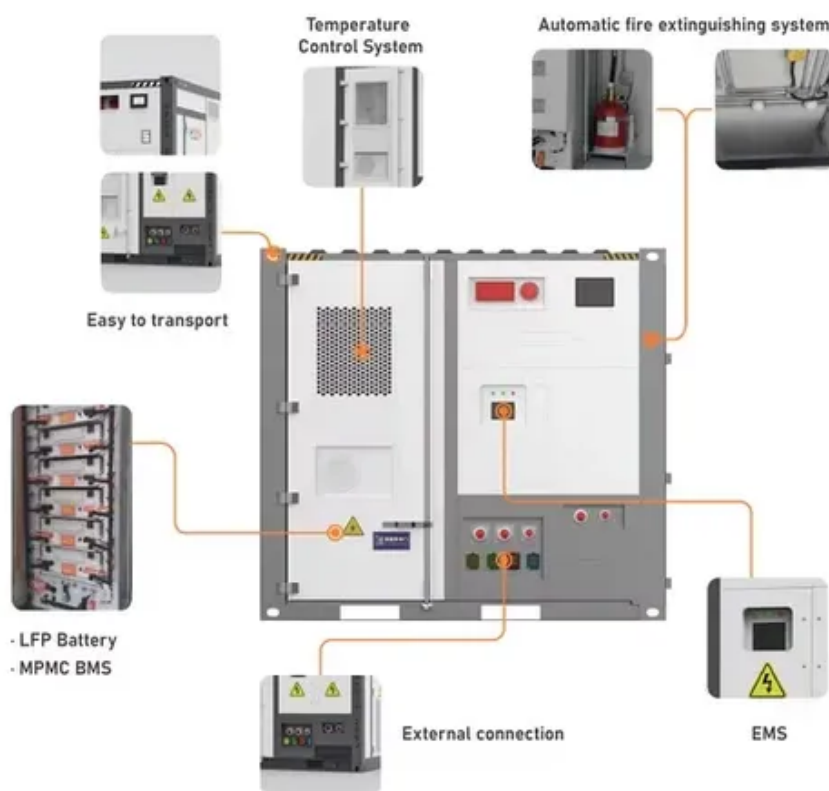




# How many watts does a solar panel have per 10 square meters





## Overview

---

A solar panel rated at 300 watts under standard conditions requires approximately 1.6 square meters of space to install. Therefore, in 10 square meters, one can reasonably install 6 to 7 panels, yielding a total output of approximately 1800 to 2100 watts.

A solar panel rated at 300 watts under standard conditions requires approximately 1.6 square meters of space to install. Therefore, in 10 square meters, one can reasonably install 6 to 7 panels, yielding a total output of approximately 1800 to 2100 watts.

To determine how many watts of solar energy can be installed in 10 square meters, it is essential to consider several key factors. 1. Average solar panel efficiency, 2. Sunlight availability, 3. Type of solar technology, 4. Layout and orientation of solar panels. 1. Average solar panel efficiency:.

Solar panels have become a cornerstone of renewable energy, but many wonder: How much power can a single square meter of solar panels actually produce?

Let's break down the science behind photovoltaic efficiency. Under optimal conditions (5 peak sun hours): At noon under direct sunlight: \*Note: 1m<sup>2</sup>.

The answer lies in something most solar salespeople never properly explain— solar irradiance and your actual energy potential per square meter. Here's what's shocking: A single square meter of solar panel can generate anywhere from 150 to 250 watts under ideal conditions. But "ideal" rarely exists.

This metric shows how much power a solar panel produces per square meter of surface area under standard conditions. By knowing W/m, you can: Install solar panels and maximize your energy output! What is Solar Panel Efficiency?

Solar panel efficiency measures how well a panel converts sunlight into.

A 100-watt panel can produce 100 watts per hour in direct sunlight. A 400-watt panel can generate 400 watts per hour under the same conditions. This doesn't mean they'll produce that amount all day, output varies with weather, shade, and panel orientation. Renogy 200W Portable Solar Panel, IP65.



These standardized conditions include 1,000 watts per square meter of solar irradiance, 25°C cell temperature, and air mass of 1.5. The basic solar panel wattage formula is:  $\text{Wattage} = \text{Voltage} \times \text{Current}$  However, real-world applications require more sophisticated calculations accounting for. How many Watts Does a solar panel produce per square meter?

On average, a solar panel produces around 150 to 200 watts per square meter. This can vary due to: Example: A 1.7 m<sup>2</sup> panel with 20% efficiency will produce about 340W in full sun. Note: Monocrystalline panels lead in efficiency, making them ideal for rooftops with limited space.

How much solar energy is received per square meter?

The amount of solar intensity received by the solar panels is measured in terms of square per meter. The sunlight received per square meter is termed solar irradiance. As per the recent measurements done by NASA, the average intensity of solar energy that reaches the top atmosphere is about 1,360 watts per square meter.

How many watts can a 400 watt solar panel produce?

A 100-watt panel can produce 100 watts per hour in direct sunlight. A 400-watt panel can generate 400 watts per hour under the same conditions. This doesn't mean they'll produce that amount all day, output varies with weather, shade, and panel orientation. Solar Power Meter Digital Solar Energy Meter Radiation Measurement.

How to calculate solar power per square meter?

You can calculate the solar power per square meter with the following calculators. 1. For Off-Grid It is the system that generates its own power with panels and a battery bank. In the off-grid calculator select from the option, shed cabin, house, or portable. Next, select the days of full autonomy, etc. 2. Solar Savings Calculator



## How many watts does a solar panel have per 10 square meters

---



### Solar Panel Wattage Calculator

This solar panel wattage calculator allows you to calculate the recommended solar panel wattage according to the energy consumption of your household appliances. If you want to know more ...

### [Solar Panel Watts Per Square Meter Explained](#)

Learn how to measure solar panel efficiency using solar panel watts per square meter with this comprehensive guide.



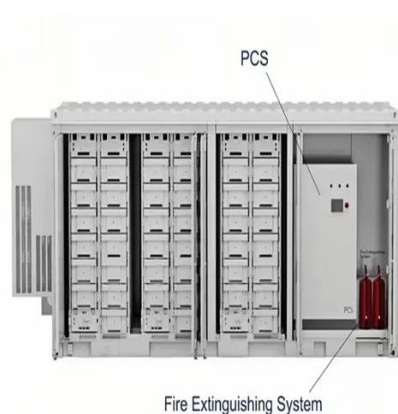
### How many watts of solar energy can be installed in 10 square meters

A solar panel rated at 300 watts under standard conditions requires approximately 1.6 square meters of space to install. Therefore, in 10 square meters, one can reasonably ...

### [Solar Panel Wattage Explained: How Many Watts](#)

...

On average, a solar panel produces around 150 to 200 watts per square meter. This can vary due to:  
Example: A 1.7 m<sup>2</sup> panel with 20% ...



### [Solar Power per Square Meter Calculator](#)

The amount of solar intensity received by the solar panels is measured in terms of square per meter. The sunlight received per square ...

### **Solar Panel Output Per Square Meter**

Discover how much electricity solar panels generate per square meter, explore efficiency factors, technology comparisons, and ...



### **Solar Panel Output Per Square Meter**

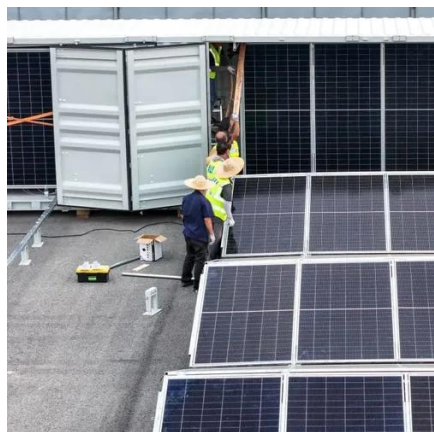
Discover how much electricity solar panels generate per square meter, explore efficiency factors, technology comparisons, and future innovations in photovoltaic energy.



### [Solar Panel Wattage Calculation: How To ...](#)



These standardized conditions include 1,000 watts per square meter of solar irradiance, 25°C cell temperature, and air mass of 1.5. The basic solar ...



### Solar Panel Wattage Calculator

How many watts is a 400W solar panel? The number in the panel's name is its rated wattage. A 400W solar panel can produce up to 400 watts in full sun. But remember, that's under test ...

### [Solar Power Per Square Meter Calculator](#)

Calculate solar panel energy output per square meter. Get accurate daily, monthly, and annual production estimates based on location, panel specs, and system losses.



### Solar Panel Wattage Calculator

How many watts is a 400W solar panel? The number in the panel's name is its rated wattage. A 400W solar panel can produce up to 400 watts in full ...

48V 100Ah



### [Solar Panel Wattage Calculation: How To Calculate In 2025?](#)



These standardized conditions include 1,000 watts per square meter of solar irradiance, 25°C cell temperature, and air mass of 1.5. The basic solar panel wattage formula is:  $Wattage = Voltage \times Current$  ...



### [Solar Panel Wattage Explained: How Many Watts Do You Need?](#)

On average, a solar panel produces around 150 to 200 watts per square meter. This can vary due to:  
Example: A 1.7 m<sup>2</sup> panel with 20% efficiency will produce about 340W in full ...

### [Solar Power per Square Meter Calculator](#)

The amount of solar intensity received by the solar panels is measured in terms of square per meter. The sunlight received per square meter is termed solar irradiance. As per ...



### [How many watts of solar energy can be installed in ...](#)

A solar panel rated at 300 watts under standard conditions requires approximately 1.6 square meters of space to install. Therefore, in ...

## **PVWatts Calculator**



NREL's PVWatts<sup>®</sup> Calculator Estimates the energy production of grid-connected photovoltaic (PV) energy systems throughout the world. It allows homeowners, small building owners, ...





## Contact Us

---

For catalog requests, pricing, or partnerships, please visit:

<https://www.asimer.es>

Phone: +34 910 56 87 42

Email: [info@asimer.es](mailto:info@asimer.es)

Scan the QR code to access our WhatsApp.

