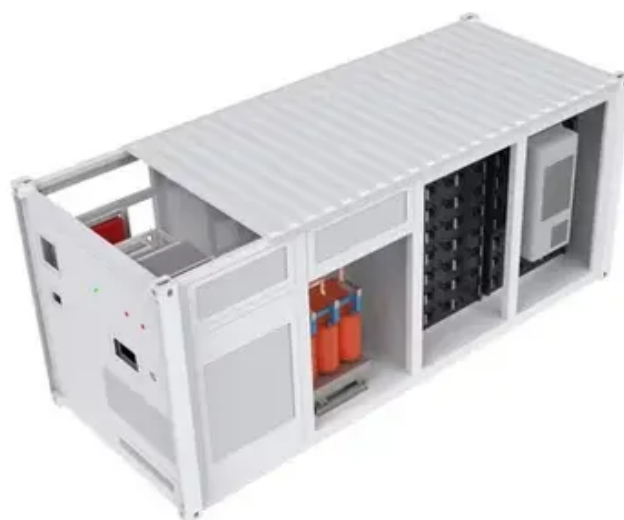




How much watt is suitable for home inverter





Overview

In general, a 3000W to 5000W inverter works well for most homes, but the exact size depends on factors like household appliances, total power consumption, and battery setup. In this guide, we'll explain how to calculate the right inverter size for home backup power and even for.

In general, a 3000W to 5000W inverter works well for most homes, but the exact size depends on factors like household appliances, total power consumption, and battery setup. In this guide, we'll explain how to calculate the right inverter size for home backup power and even for.

An inverter plays a pivotal role in any residential energy system especially in solar-powered, off-grid, or backup power setups. It converts direct current (DC) typically sourced from solar panels, batteries, or generators into alternating current (AC), which is the standard form of electricity.

In general, a 3000W to 5000W inverter works well for most homes, but the exact size depends on factors like household appliances, total power consumption, and battery setup. In this guide, we'll explain how to calculate the right inverter size for home backup power and even for solar power systems.

To find the right inverter power, calculate the total wattage of all the appliances you want to run during an outage. Tip: Always add 20-25% as a safety margin. So, $595W \times 1.25 = \text{approx. } 750W$ inverter needed. 3. Choose the Inverter Type There are mainly two types of inverters: Recommendation: For.

Inverter size is measured in watts (W) and depends on two key specs: * Important: Your inverter must cover both the total running watts of all devices plus the highest surge wattage of any single appliance. 3. Step-by-Step: How to Calculate Your Inverter Size Include: Home: Fridge, lights, TV.

How to Calculate Watts for Home Appliances?

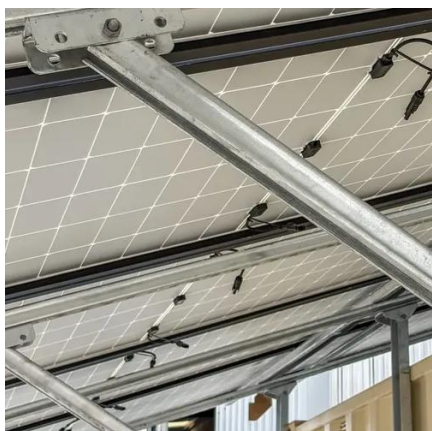
The inverter size depends on the number of appliances or gadgets you want to run with it during outages or outdoor activities. If you want to power up more appliances, you will need a bigger inverter. To calculate or determine what size inverter can meet.



The first step to choosing the right inverter is knowing exactly how much power your home uses. Here's how: Start by listing every device you want to power during an outage. Prioritize essentials: Pro Tip: Skip non-essentials like air conditioners or water heaters unless you're planning for.



How much watt is suitable for home inverter

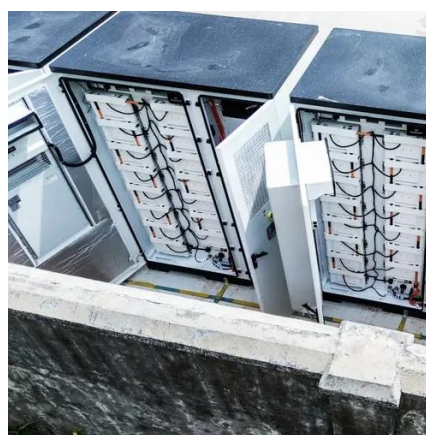


[What Size Inverter Do You Need for Your Home?.. Renogy US](#)

Inverters are available in different sizes to power home appliances. Considering your energy requirements, you can buy and install 1000W, 2000W, 3000W, 5000W, or even bigger inverters.

What Size Inverter Do You Need? A Complete Guide for Home, ...

Choosing the right inverter size is crucial--too small, and your appliances won't work; too large, and you'll waste money. This guide will help you determine the ideal inverter ...



[How to Size an Inverter and UPS for Home Appliances?](#)

The following step-by-step example demonstrates how to determine and select a properly rated inverter or UPS (Uninterruptible Power Supply) for home and office appliances:



[How to Size a Home Power Inverter for Your ...](#)

Provide detailed instructions on how to calculate the appropriate size of a power inverter based on household power ...



What Size Inverter Will Run a Home?

This is all you need to find the right inverter size for your home use. The essentials are understanding the continuous power ...



[How to Choose the Right Inverter Size for Your Home](#)

Choose an inverter with at least 600W capacity (to cover the fridge's 800W starting surge). Inverters come in sizes from 500W (for small cabins) to 5000W+ (for large homes). ...



[MWXNE , How to Select the Right Power Inverter for Home Use](#)

In this guide, we'll walk you through everything you need to know to select the right inverter for your home -- from calculating load requirements to understanding inverter ...



[What Size Inverter Do You Need for Your Home? -](#)

...



In this guide, we'll walk you through the steps to accurately calculate your home's total power demand and select an inverter that best ...



[What Size Power Inverter Is Needed for a House \[Full Guide\]](#)

In general, a 3000W to 5000W inverter works well for most homes, but the exact size depends on factors like household appliances, total power consumption, and battery ...

[How to Size an Inverter and UPS for Home ...](#)

The following step-by-step example demonstrates how to determine and select a properly rated inverter or UPS (Uninterruptible Power Supply) for ...



[What Size Inverter Do You Need for Your Home?](#)

Inverters are available in different sizes to power home appliances. Considering your energy requirements, you can buy and install 1000W, ...



[How to Choose the Right Inverter Size for Your Home](#)



Choose an inverter with at least 600W capacity (to cover the fridge's 800W starting surge). Inverters come in sizes from 500W (for ...



How to Size a Home Power Inverter for Your Needs: A Step-by ...

Provide detailed instructions on how to calculate the appropriate size of a power inverter based on household power requirements. Include formulas, examples, and ...



[How Many Watt Inverter Do I Need? , Click to ...](#)

First, calculate the total wattage of all the devices you plan to power. Each appliance has a specific running power and may require ...



[MWXNE , How to Select the Right Power Inverter ...](#)

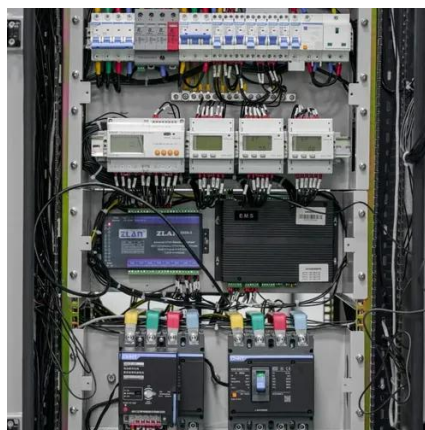
In this guide, we'll walk you through everything you need to know to select the right inverter for your home -- from calculating load ...



What Size Inverter Do You Need for Your Home? - PowerGen USA



In this guide, we'll walk you through the steps to accurately calculate your home's total power demand and select an inverter that best matches your energy usage patterns and ...



[How Many Watt Inverter Do I Need? , Click to Learn More](#)

First, calculate the total wattage of all the devices you plan to power. Each appliance has a specific running power and may require specific surge power. Here are some ...

What Size Inverter Will Run a Home?

This is all you need to find the right inverter size for your home use. The essentials are understanding the continuous power ratings and surge power and calculating the total ...





Contact Us

For catalog requests, pricing, or partnerships, please visit:

<https://www.asimer.es>

Phone: +34 910 56 87 42

Email: info@asimer.es

Scan the QR code to access our WhatsApp.

