



How to check the location of nearby battery cabinets





Overview

Working space shall be measured from the edge of the battery cabinet, racks, or trays. For battery racks, there shall be a minimum clearance of 25 mm (1 in.) between a cell container and any wall or structure on the side not requiring access for maintenance.

Working space shall be measured from the edge of the battery cabinet, racks, or trays. For battery racks, there shall be a minimum clearance of 25 mm (1 in.) between a cell container and any wall or structure on the side not requiring access for maintenance.

Property owners and tenants with permission from property owners can apply to install battery swapping and charging cabinets adjacent to their buildings. These cabinets expand public access to safe charging for electric micromobility users. Through a revocable consent agreement with the Department.

Working space shall be measured from the edge of the battery cabinet, racks, or trays, (NEC 480.9, 110.26) Spaces about the ESS shall comply with NEC 110.26. Working space shall be measured from the edge of the ESS modules, battery cabinets, racks, or trays, (NEC 706.10(C)) For battery racks, there.

Section 480.9 (E) requires any personnel doors intended for entrance to, and egress from a battery room, to open in the direction of egress and be equipped with listed panic hardware. Below is a preview of the NEC®. See the actual NEC® text at NFPA.ORG for the complete code section. Once there.

This and many other products are now available for order online and pickup at a Ferguson location near you. [How Do I Update My Pickup Location?](#)

Your nearest pickup location within a 50-mile radius is automatically selected when you enter the site. To change your pickup location and see availability.

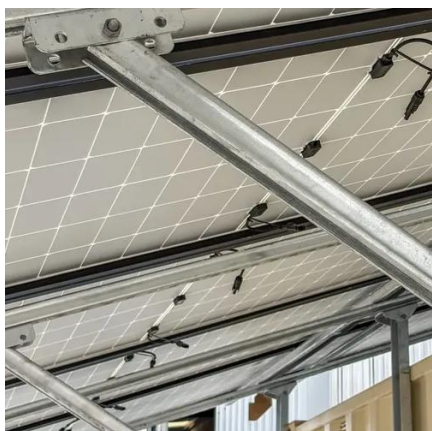
For businesses contemplating a li ion battery storage location, one of the first steps should be to determine if there are any applicable fire codes that govern your locale. The most notable development in codes and standards has emanated from the 2024 amendments in the International Fire Code.



The placement of solar battery cabinets is a critical decision that can significantly impact the performance, safety, and longevity of the batteries. In this blog post, I'll share some professional insights and recommendations to help you make an informed choice. Solar battery cabinets serve as a



How to check the location of nearby battery cabinets



What is the recommended installation location for solar battery ...

By considering factors such as temperature, ventilation, moisture, accessibility, and safety, you can ensure that your battery cabinets are installed in a location that maximizes ...

Revocable Consent for Electric Micromobility Device Battery ...

This rule will encourage the safe use of electric micromobility devices in order to address this urgent fire threat. Without this rule, store owners, building owners, and battery swapping and ...



[NYC DOT Opens Application Process for Sidewalk E-Bike ...](#)

DOT has issued an application guide, Sidewalk E-Bike Battery Swapping and Charging Cabinets 101, which outlines the site clearance requirements, cabinet specifications, ...

480.9 Battery Locations.

Working space shall be measured from the edge of the battery cabinet, racks, or trays. For battery racks, there shall be a minimum clearance of 25 mm (1 in.) between a cell container and any ...



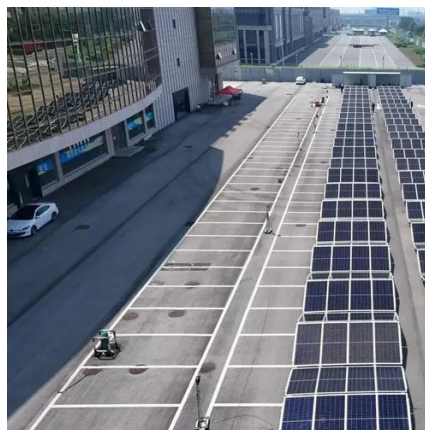
Interstate Battery Stores Near Me Location Finder , Interstate Batteries

Use our Interstate Batteries location finder to locate the nearest store for all your battery solutions today!



Interstate Battery Stores Near Me Location Finder , Interstate ...

Use our Interstate Batteries location finder to locate the nearest store for all your battery solutions today!



Where Should You Store Batteries - Safe Battery Storage , Justrite

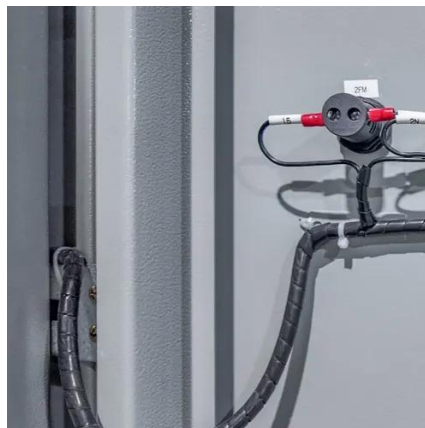
In determining where to store li ion batteries, the most basic requirement is to ensure that the storage location meets the following guidelines. These are minimum conditions which must be ...



[E-Bike Battery Swapping and Charging Cabinets](#)



Property owners and tenants with permission from property owners can apply to install battery swapping and charging cabinets adjacent to their buildings. These cabinets expand public ...



NYC DOT Opens Application Process for Sidewalk E-Bike Charging Cabinets

DOT has issued an application guide, Sidewalk E-Bike Battery Swapping and Charging Cabinets 101, which outlines the site clearance requirements, cabinet specifications, ...



[New York Battery Energy Storage System Guidebook for ...](#)

ESS modules, battery cabinets, racks, or trays shall be permitted to contact adjacent walls or structures, provided that the battery shelf has a free air space for not less than 90% of its length.



480.9 Battery Locations.

Working space shall be measured from the edge of the battery cabinet, racks, or trays. For battery racks, there shall be a minimum clearance of ...



What is the recommended installation location for solar battery cabinets?



By considering factors such as temperature, ventilation, moisture, accessibility, and safety, you can ensure that your battery cabinets are installed in a location that maximizes ...



Generac PWRcell Battery Cabinets

Your nearest pickup location within a 50-mile radius is automatically selected when you enter the site. To change your pickup location and see availability for other nearby locations, click the ...



[Battery Storage and Charging Area Inspection ...](#)

Use this battery inspection checklist to ensure your battery storage and charging areas are in compliance with OSHA battery storage standards.



[Battery Storage and Charging Area Inspection Checklist](#)

Use this battery inspection checklist to ensure your battery storage and charging areas are in compliance with OSHA battery storage standards.





Contact Us

For catalog requests, pricing, or partnerships, please visit:

<https://www.asimer.es>

Phone: +34 910 56 87 42

Email: info@asimer.es

Scan the QR code to access our WhatsApp.

