



How to choose between 12v and 60v sine wave inverter





Overview

We'll walk through exactly how to figure out your perfect inverter size, decode the jargon like "pure sine wave vs modified," understand your battery needs, and look at specific examples for your car, RV, or even a home backup system.

We'll walk through exactly how to figure out your perfect inverter size, decode the jargon like "pure sine wave vs modified," understand your battery needs, and look at specific examples for your car, RV, or even a home backup system.

A true sine wave inverter transforms battery power into the very same clean electricity your home system would normally employ, making sure your electronics function at peak. They are fully compatible with anything from computers to refrigerators and even important medical equipment—without.

To choose the right power inverter, you need to determine the total wattage of all the devices you'll run at once and decide if you need a pure sine wave or a modified sine wave model. It's that simple at its core. But getting those two things right is what makes the difference between powering.

Pure sine wave inverters have become the gold standard for off-grid energy systems, RV setups, emergency backup power, and solar installations—thanks to their broad compatibility with sensitive electronics, high energy efficiency, and ability to protect valuable devices. However, with a wide range.

Their capacity is measured in watts, and choosing the right inverter depends on your power consumption needs and the type of devices you intend to run. Having an inverter at home is essential for ensuring uninterrupted power supply during blackouts or unstable grid conditions. In regions where.

For consumers who want to buy a pure sine wave inverter, the most common question is: "How much power do I really need to buy?"

is 300W enough?

is 2000W too expensive?

" The most critical thing about choosing an inverter is to choose the power



according to your actual power equipment. Otherwise, you.

In this guide, we'll walk you through everything you need to know to select the right inverter for your home — from calculating load requirements to understanding inverter capacity, battery compatibility, and safety tips. 1. Understand What an Inverter Does An inverter converts DC (Direct Current).



How to choose between 12v and 60v sine wave inverter



How to choose a pure sine wave inverter? Look at the power, ...

For consumers who want to buy a pure sine wave inverter, the most common question is: "How much power do I really need to buy? is 300W enough? is 2000W too expensive?" The most ...

How to Choose an Inverter

Here are the key steps and considerations: 1. Determine the Inverter Type. Grid-Tied Inverter: For solar power systems that feed electricity back into the grid (must comply with local ...



How to Choose a Pure Sine Wave Inverter: A Comprehensive Guide

The first and most critical step in choosing a pure sine wave inverter is determining how much power you need to supply to your devices. This involves two key calculations: ...

[How to Choose a Pure Sine Wave Inverter Based on Power ...](#)

Choosing the right pure sine wave inverter isn't just about brand or price -- it's about matching your power needs. If you select an inverter that's too small, it may shut down ...



[Reliable Pure Sine Wave Inverter Selection](#)

Learn how to choose, install, and use pure sine wave inverters to protect your electronics and keep everything running during blackouts and off-grid adventures.



[MWXNE , How to Select the Right Power Inverter ...](#)

In this guide, we'll walk you through everything you need to know to select the right inverter for your home -- from calculating load ...



[MWXNE , How to Select the Right Power Inverter for Home Use](#)

In this guide, we'll walk you through everything you need to know to select the right inverter for your home -- from calculating load requirements to understanding inverter ...



[Best Pure Sine Wave Inverters and Sustainable ...](#)



Discover how pure sine wave inverters work, why they're essential for clean power, and which sustainable brands offer the best ...



Best Pure Sine Wave Inverters and Sustainable Brands to Know

Discover how pure sine wave inverters work, why they're essential for clean power, and which sustainable brands offer the best options for you.

[Which Power Inverter Do I Need? The Definitive Guide](#)

Confused about power inverters? This guide explains how to calculate wattage, choose between pure sine & modified wave, and pick the right size for your car, RV, or off-grid setup.



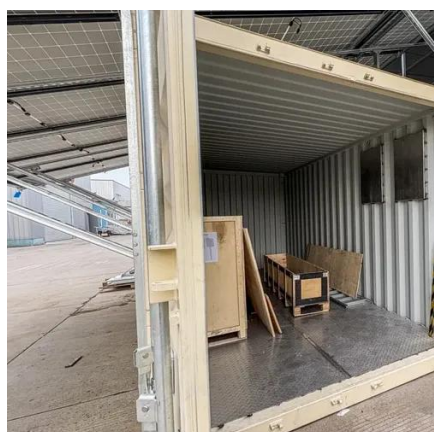
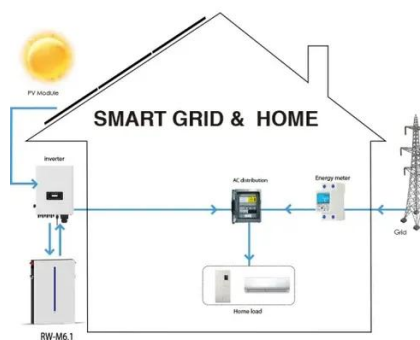
[How to Choose the Right Inverter For Home? , inverter](#)

Choosing the right power inverter for your home involves understanding your power needs, selecting the right type and capacity, ensuring compatibility with a suitable battery, and ...

[Choosing the Right Inverter: The Complete Guide to Solar](#)



Choosing the right inverter can save money, boost efficiency, and protect appliances. Discover expert tips for solar and home systems today.



[Reliable Pure Sine Wave Inverter Selection](#)

Learn how to choose, install, and use pure sine wave inverters to protect your electronics and keep everything running during blackouts ...



Contact Us

For catalog requests, pricing, or partnerships, please visit:

<https://www.asimer.es>

Phone: +34 910 56 87 42

Email: info@asimer.es

Scan the QR code to access our WhatsApp.

