



# How to connect the network cable to the base station room for uninterrupted power supply





## Overview

---

With the unit unplugged, press and hold the connect button on the base station. While still holding the connect button, plug the power (or network cable if PoE) back into the unit. Wait until all three lights on the unit are showing as solid green, and release the connect.

With the unit unplugged, press and hold the connect button on the base station. While still holding the connect button, plug the power (or network cable if PoE) back into the unit. Wait until all three lights on the unit are showing as solid green, and release the connect.

Power off the unit by unplugging the power cord from the back (for PoE, disconnect the network cable) and wait for 15 seconds. With the unit unplugged, press and hold the connect button on the base station. While still holding the connect button, plug the power (or network cable if PoE) back into.

You have two options for power and network connection of the base station. Your system administrator will advise you which one to use. Please pay attention to the radio coverage of the base station. It is up to 300m in unobstructed outdoor areas and up to 50m inside buildings. Do not set up the base.

connected to the Gateway using any cabling. If you need to place the antenna in a different location, you must order the Antenna Relocation Kit and connect the relocation antenna to the Gateway using the provided cables. Cables are not supplied with antenna cabling. If a Gateway needs to be remote from the.

AirPort is a simple and fast way to access the Internet from anywhere in your home, classroom, or office without cables, additional phone lines, or complicated networking software. AirPort is a wireless local area network (WLAN) technology that provides high-performance wireless communication.

You can follow this YouTube video or the content below to install your station. 1. Start-up of the HYFIX device (HYFIX or OEM version) Plug in the USB-C cable and power the HYFIX device with any 5 volt, 2.5 or 3 amp USB charger. On the HYFIX device, remove the red plastic from the "WiFi-BT" input.

A semi-permanent or permanent base station helps to eliminate the types of error



that can result from repeated daily setups, and ensures that you always use the GNSS antenna at the exact original location. The requirement for a permanent base station setup increases as more receivers that use the.



## How to connect the network cable to the base station room for uninte

### Lithium battery parameters

Product capacity: 100Ah

Product size: 135\*197\*35mm

Product weight: 1.82kg

Product voltage: 3.2V

internal resistance: within 0.5



### How to Configure Internet for Your Station , GEODNET DOCS ...

On your phone, PC or MAC, go into the settings and networks and connect to your HYFIX device's Wi-Fi. It should start with "MGW200\_" or "MobileCM\_". For password, enter in the ...

### [AirPort Extreme Base Station Setup Guide \(Manual\)](#)

If you install the base station in an air-handling space, you need to connect the Ethernet WAN port to 802.3af-compliant Power Sourcing Equipment (PSE) with a plenum-rated Ethernet cable.



### How to connect an Arlo SmartHub or Base Station to the Internet ...

Set up your Arlo SmartHub or Base Station with ease! Our guide provides clear instructions to connect to the Internet and optimize your Arlo system (with Library).

### [Yealink Cordless - Connecting the base station](#)

1 nnect the Ethernet cable between the Internet port on the base station and an available port on the in-line power switch/hub. Note: If in-line power is provided, you don't ...

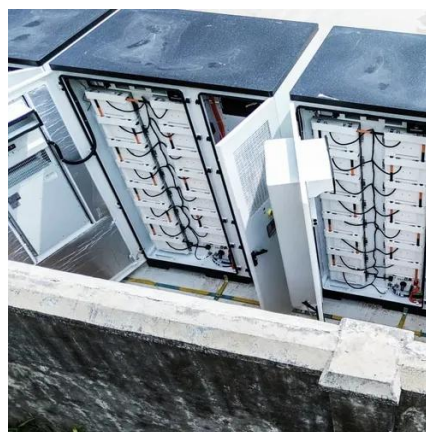


### [Common ways to set up a base station](#)

Connect the antennas to the receiver using the appropriate cables. The receiver uses its own integrated battery, or an external 12 V battery through the 12 V crocodile clips cable that are ...

### [DataMan® Communications and Programming Guide](#)

Connect to the terminal program using the IP address of the Base Station. To find out the IP address, go to the Connect page in the DataMan Setup Tool and check the IP address of the ...



### [TB9400 Installation and Operation Manual](#)

Use a 50: coaxial cable (RG58 or RG223) to connect the source to the base station's 1PPS input. You can daisy-chain up to eight base stations using F-junctions.

### [How to Setup The Yealink Wireless Phone & Base](#)

...



With the unit unplugged, press and hold the connect button on the base station. While still holding the connect button, plug the power (or ...



### **How to Setup The Yealink Wireless Phone & Base Station Setup ...**

With the unit unplugged, press and hold the connect button on the base station. While still holding the connect button, plug the power (or network cable if PoE) back into the ...



### [Yealink Cordless - Connecting the base station](#)

1 nnect the Ethernet cable between the Internet port on the base station and an available port on the in-line power switch/hub. Note: ...



### [Gateway and Base Station Installation Guide](#)

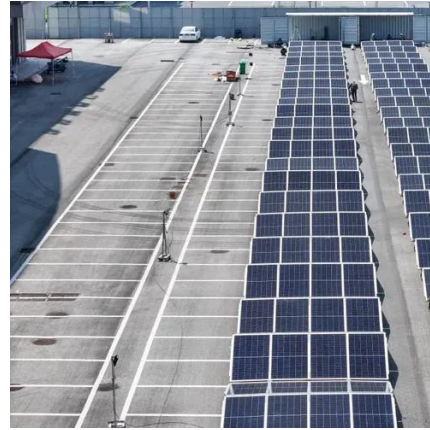
Coax Cable Drip Loop: Ensure that the coax cable running between the Gateway and the relocation antenna has a drip loop immediately before the enclosure to help prevent water ...



### [Fix Wyze Base Station Not Connecting - Complete ...](#)



Make sure the cable is securely connected to the base station. Check for any signs of wear or damage on the cable. The base station is designed to work best with the ...





## Contact Us

---

For catalog requests, pricing, or partnerships, please visit:

<https://www.asimer.es>

Phone: +34 910 56 87 42

Email: [info@asimer.es](mailto:info@asimer.es)

Scan the QR code to access our WhatsApp.

